



[Go to Product page](#)

Datasheet for ABIN6265455

## anti-TAS1R2 antibody (Internal Region)

### 2 Images

#### Overview

Quantity:	100 µL
Target:	TAS1R2
Binding Specificity:	Internal Region
Reactivity:	Human, Rat, Mouse
Host:	Rabbit
Clonality:	Polyclonal
Conjugate:	This TAS1R2 antibody is un-conjugated
Application:	Western Blotting (WB), ELISA

#### Product Details

Immunogen:	A synthesized peptide derived from human TAS1R2, corresponding to a region within the internal amino acids.
Isotype:	IgG
Specificity:	TAS1R2 Antibody detects endogenous levels of total TAS1R2.
Purification:	The antiserum was purified by peptide affinity chromatography using SulfoLink™ Coupling Resin (Thermo Fisher Scientific).

#### Target Details

Target:	TAS1R2
Alternative Name:	TAS1R2 ( <a href="#">TAS1R2 Products</a> )

## Target Details

---

Background:	Description: Putative taste receptor. TAS1R2/TAS1R3 recognizes diverse natural and synthetic sweeteners. Gene: TAS1R2
Molecular Weight:	95 kDa
Gene ID:	80834
UniProt:	<a href="#">Q8TE23</a>

## Application Details

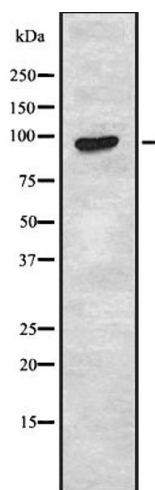
---

Application Notes:	WB 1:1000-3000, ELISA(peptide) 1:20000-1:40000
Restrictions:	For Research Use only

## Handling

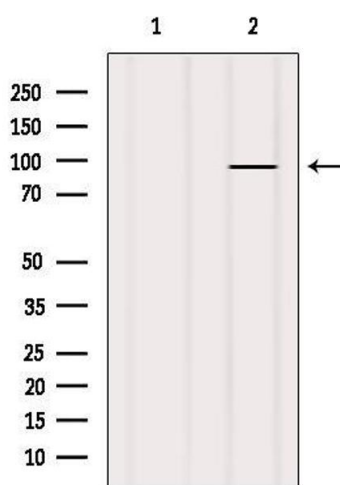
---

Format:	Liquid
Concentration:	1 mg/mL
Buffer:	Rabbit IgG in phosphate buffered saline , pH 7.4, 150 mM NaCl, 0.02 % sodium azide and 50 % glycerol.
Preservative:	Sodium azide
Precaution of Use:	This product contains Sodium azide: a POISONOUS AND HAZARDOUS SUBSTANCE which should be handled by trained staff only.
Storage:	-20 °C
Storage Comment:	Store at -20 °C. Stable for 12 months from date of receipt.
Expiry Date:	12 months



#### Western Blotting

**Image 1.** Western blot analysis of TAS1R2 using HUVEC whole cell lysates



#### Western Blotting

**Image 2.** Western blot analysis of extracts from HUVEC, using TAS1R2 Antibody. The lane on the left was treated with blocking peptide.