



[Go to Product page](#)

Datasheet for ABIN6265457
anti-TAS2R12 antibody

1 Image

Overview

Quantity:	100 µL
Target:	TAS2R12
Reactivity:	Human, Mouse, Rat
Host:	Rabbit
Clonality:	Polyclonal
Conjugate:	This TAS2R12 antibody is un-conjugated
Application:	Immunohistochemistry (IHC), Western Blotting (WB), ELISA

Product Details

Immunogen:	A synthesized peptide derived from human TAS2R12
Isotype:	IgG
Specificity:	TAS2R12 Antibody detects endogenous levels of total TAS2R12
Cross-Reactivity:	Human, Mouse (Murine), Rat (Rattus)
Purification:	The antiserum was purified by peptide affinity chromatography using SulfoLink™ Coupling Resin (Thermo Fisher Scientific).

Target Details

Target:	TAS2R12
Alternative Name:	TAS2R12 (TAS2R12 Products)
Molecular Weight:	31kDa

Target Details

UniProt: [P59531](#)

Application Details

Application Notes: WB 1:1000-3000 IHC 1:200

Restrictions: For Research Use only

Handling

Format: Liquid

Concentration: 1 mg/mL

Buffer: Rabbit IgG in phosphate buffered saline , pH 7.4, 150 mM NaCl, 0.02 % sodium azide and 50 % glycerol.

Preservative: Sodium azide

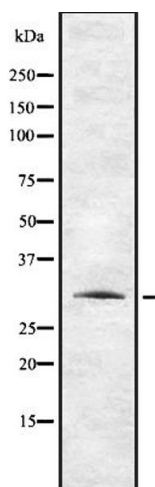
Precaution of Use: This product contains Sodium azide: a POISONOUS AND HAZARDOUS SUBSTANCE which should be handled by trained staff only.

Storage: -20 °C

Storage Comment: Store at -20 °C.Stable for 12 months from date of receipt

Expiry Date: 12 months

Images



Western Blotting

Image 1. Western blot analysis of TAS2R12 using HepG2 whole cell lysates