

Datasheet for ABIN6265463

anti-TAS2R43 antibody**2** Images[Go to Product page](#)

Overview

Quantity:	100 µL
Target:	TAS2R43
Reactivity:	Human
Host:	Rabbit
Clonality:	Polyclonal
Conjugate:	This TAS2R43 antibody is un-conjugated
Application:	Western Blotting (WB), ELISA, Immunofluorescence (IF), Immunocytochemistry (ICC)

Product Details

Immunogen:	A synthesized peptide derived from human TAS2R43
Isotype:	IgG
Specificity:	TAS2R43 Antibody detects endogenous levels of total TAS2R43
Cross-Reactivity:	Human
Purification:	The antiserum was purified by peptide affinity chromatography using SulfoLink™ Coupling Resin (Thermo Fisher Scientific).

Target Details

Target:	TAS2R43
Alternative Name:	TAS2R43 (TAS2R43 Products)
Background:	Description: Gustducin-coupled receptor implicated in the perception of bitter compounds in

Target Details

the oral cavity and the gastrointestinal tract. Signals through PLCB2 and the calcium-regulated cation channel TRPM5. Activated by the sulfonyl amide sweeteners saccharin and acesulfame K. In airway epithelial cells, binding of bitter compounds increases the intracellular calcium ion concentration and stimulates ciliary beat frequency. May act as chemosensory receptors in airway epithelial cells to detect and eliminate potential noxious agents from the airways (By similarity).

Gene: TAS2R43

Molecular Weight: 35 kDa

Gene ID: 259289

UniProt: [P59537](#)

Application Details

Application Notes: WB 1:1000-3000, IF/ICC 1:100-1:500

Restrictions: For Research Use only

Handling

Format: Liquid

Concentration: 1 mg/mL

Buffer: Rabbit IgG in phosphate buffered saline , pH 7.4, 150 mM NaCl, 0.02 % sodium azide and 50 % glycerol.

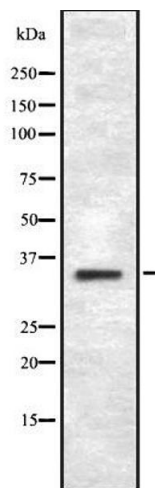
Preservative: Sodium azide

Precaution of Use: This product contains Sodium azide: a POISONOUS AND HAZARDOUS SUBSTANCE which should be handled by trained staff only.

Storage: -20 °C

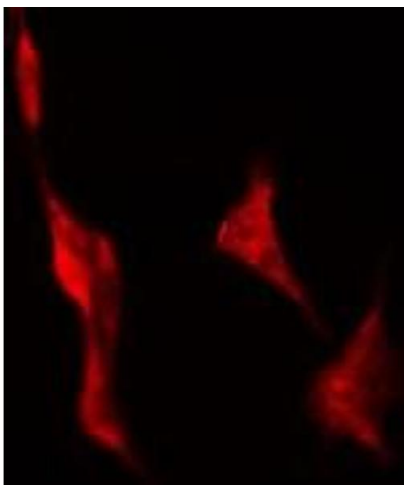
Storage Comment: Store at -20 °C.Stable for 12 months from date of receipt

Expiry Date: 12 months



Western Blotting

Image 1. Western blot analysis of TAS2R43 using RAW264.7 whole cell lysates



Immunofluorescence (fixed cells)

Image 2. ABIN6278640 staining HeLa by IF/ICC. The sample were fixed with PFA and permeabilized in 0.1% Triton X-100, then blocked in 10% serum for 45 minutes at 25°C. The primary antibody was diluted at 1/200 and incubated with the sample for 1 hour at 37°C. An Alexa Fluor 594 conjugated goat anti-rabbit IgG (H+L) Ab, diluted at 1/600, was used as the secondary antibody