

Datasheet for ABIN6265464

anti-TAS2R31 antibody**2** Images[Go to Product page](#)

Overview

Quantity:	100 µL
Target:	TAS2R31
Reactivity:	Human, Mouse, Rat
Host:	Rabbit
Clonality:	Polyclonal
Conjugate:	This TAS2R31 antibody is un-conjugated
Application:	Western Blotting (WB), ELISA

Product Details

Immunogen:	A synthesized peptide derived from human TAS2R44
Isotype:	IgG
Specificity:	TAS2R44 Antibody detects endogenous levels of total TAS2R44
Cross-Reactivity:	Human, Mouse (Murine), Rat (Rattus)
Purification:	The antiserum was purified by peptide affinity chromatography using SulfoLink™ Coupling Resin (Thermo Fisher Scientific).

Target Details

Target:	TAS2R31
Alternative Name:	TAS2R44 (TAS2R31 Products)
Background:	Description: Receptor that may play a role in the perception of bitterness and is gustducin-

Target Details

linked. May play a role in sensing the chemical composition of the gastrointestinal content. The activity of this receptor may stimulate alpha gustducin, mediate PLC-beta-2 activation and lead to the gating of TRPM5 (By similarity). Activated by the sulfonyl amide sweeteners saccharin and acesulfame K.

Gene: TAS2R31

Molecular Weight: 35 kDa

Gene ID: 259290

UniProt: [P59538](#)

Application Details

Application Notes: WB 1:1000-3000

Restrictions: For Research Use only

Handling

Format: Liquid

Concentration: 1 mg/mL

Buffer: Rabbit IgG in phosphate buffered saline , pH 7.4, 150 mM NaCl, 0.02 % sodium azide and 50 % glycerol.

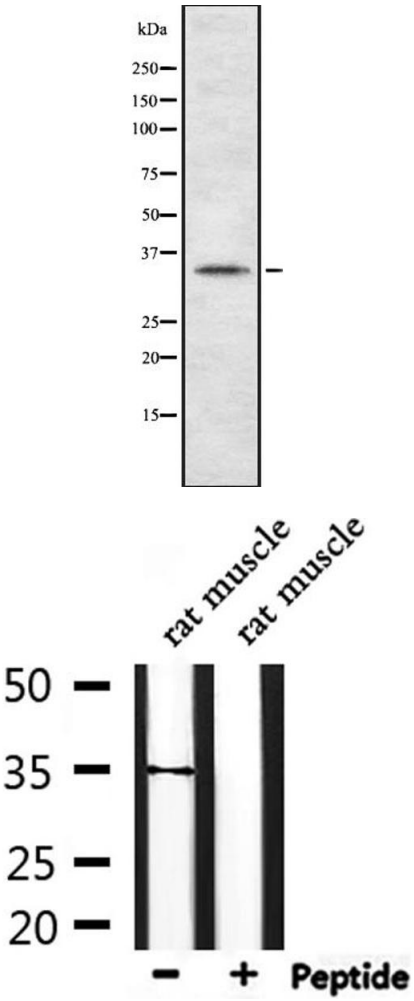
Preservative: Sodium azide

Precaution of Use: This product contains Sodium azide: a POISONOUS AND HAZARDOUS SUBSTANCE which should be handled by trained staff only.

Storage: -20 °C

Storage Comment: Store at -20 °C.Stable for 12 months from date of receipt

Expiry Date: 12 months



Western Blotting

Image 1. Western blot analysis of TAS2R44 using HepG2 whole cell lysates

Western Blotting

Image 2. Western blot analysis of extracts from rat muscle, using TAS2R44 Antibody.