

Datasheet for ABIN6265465
anti-TAS2R46 antibody[Go to Product page](#)

1 Image

Overview

Quantity:	100 µL
Target:	TAS2R46
Reactivity:	Human, Mouse, Rat
Host:	Rabbit
Clonality:	Polyclonal
Conjugate:	This TAS2R46 antibody is un-conjugated
Application:	Western Blotting (WB), ELISA

Product Details

Immunogen:	A synthesized peptide derived from human TAS2R46
Isotype:	IgG
Specificity:	TAS2R46 Antibody detects endogenous levels of total TAS2R46
Cross-Reactivity:	Human, Mouse (Murine), Rat (Rattus)
Purification:	The antiserum was purified by peptide affinity chromatography using SulfoLink™ Coupling Resin (Thermo Fisher Scientific).

Target Details

Target:	TAS2R46
Alternative Name:	TAS2R46 (TAS2R46 Products)
Background:	Description: Receptor that may play a role in the perception of bitterness and is gustducin-

Target Details

linked. May play a role in sensing the chemical composition of the gastrointestinal content. The activity of this receptor may stimulate alpha gustducin, mediate PLC-beta-2 activation and lead to the gating of TRPM5 (By similarity). In airway epithelial cells, binding of bitter compounds increases the intracellular calcium ion concentration and stimulates ciliary beat frequency (By similarity).

Gene: TAS2R46

Molecular Weight: 36 kDa

Gene ID: 259292

UniProt: [P59540](#)

Application Details

Application Notes: WB 1:1000-3000

Restrictions: For Research Use only

Handling

Format: Liquid

Concentration: 1 mg/mL

Buffer: Rabbit IgG in phosphate buffered saline , pH 7.4, 150 mM NaCl, 0.02 % sodium azide and 50 % glycerol.

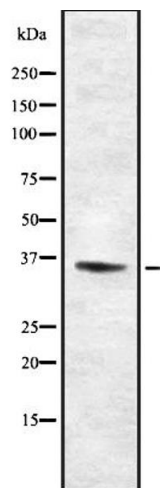
Preservative: Sodium azide

Precaution of Use: This product contains Sodium azide: a POISONOUS AND HAZARDOUS SUBSTANCE which should be handled by trained staff only.

Storage: -20 °C

Storage Comment: Store at -20 °C.Stable for 12 months from date of receipt

Expiry Date: 12 months



Western Blotting

Image 1. Western blot analysis of TAS2R46 using HUVEC whole cell lysates