

Datasheet for ABIN6265469

**anti-TAS2R9 antibody****2** Images[Go to Product page](#)

## Overview

Quantity:	100 µL
Target:	TAS2R9
Reactivity:	Human, Mouse, Rat
Host:	Rabbit
Clonality:	Polyclonal
Conjugate:	This TAS2R9 antibody is un-conjugated
Application:	Western Blotting (WB), ELISA

## Product Details

Immunogen:	A synthesized peptide derived from human TAS2R9
Isotype:	IgG
Specificity:	TAS2R9 Antibody detects endogenous levels of total TAS2R9
Cross-Reactivity:	Human, Mouse (Murine), Rat (Rattus)
Purification:	The antiserum was purified by peptide affinity chromatography using SulfoLink™ Coupling Resin (Thermo Fisher Scientific).

## Target Details

Target:	TAS2R9
Alternative Name:	TAS2R9 ( <a href="#">TAS2R9 Products</a> )
Background:	Description: Gustducin-coupled receptor implicated in the perception of bitter compounds in

## Target Details

the oral cavity and the gastrointestinal tract. Signals through PLCB2 and the calcium-regulated cation channel TRPM5 (By similarity).

Gene: TAS2R9

Molecular Weight: 36 kDa

Gene ID: 50835

UniProt: [Q9NYW1](#)

## Application Details

Application Notes: WB 1:1000-3000

Restrictions: For Research Use only

## Handling

Format: Liquid

Concentration: 1 mg/mL

Buffer: Rabbit IgG in phosphate buffered saline , pH 7.4, 150 mM NaCl, 0.02 % sodium azide and 50 % glycerol.

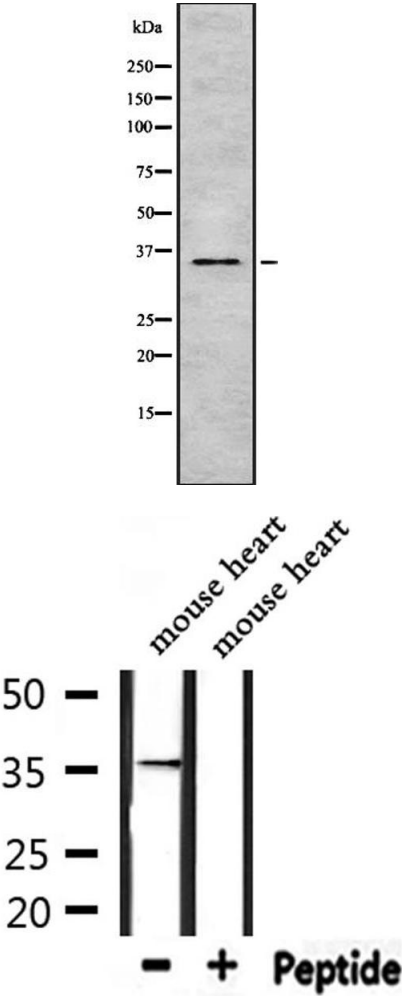
Preservative: Sodium azide

Precaution of Use: This product contains Sodium azide: a POISONOUS AND HAZARDOUS SUBSTANCE which should be handled by trained staff only.

Storage: -20 °C

Storage Comment: Store at -20 °C.Stable for 12 months from date of receipt

Expiry Date: 12 months



Western Blotting

**Image 1.** Western blot analysis of TAS2R9 using 293 whole cell lysates

Western Blotting

**Image 2.** Western blot analysis of extracts from mouse heart, using TAS2R9 Antibody.