

Datasheet for ABIN6265488
anti-TBX2 antibody (C-Term)

3 Images

[Go to Product page](#)

Overview

Quantity:	100 µL
Target:	TBX2
Binding Specificity:	C-Term
Reactivity:	Human, Mouse
Host:	Rabbit
Clonality:	Polyclonal
Conjugate:	This TBX2 antibody is un-conjugated
Application:	Western Blotting (WB), ELISA, Immunofluorescence (IF), Immunocytochemistry (ICC)

Product Details

Immunogen:	A synthesized peptide derived from human TBX2, corresponding to a region within C-terminal amino acids.
Isotype:	IgG
Specificity:	TBX2 Antibody detects endogenous levels of total TBX2.
Predicted Reactivity:	Pig,Bovine,Horse,Rabbit,Dog
Purification:	The antiserum was purified by peptide affinity chromatography using SulfoLink™ Coupling Resin (Thermo Fisher Scientific).

Target Details

Target:	TBX2
---------	------

Target Details

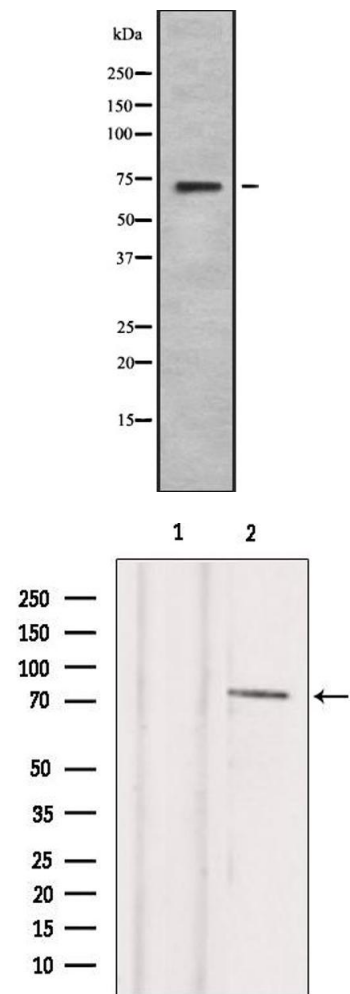
Alternative Name:	TBX2 (TBX2 Products)
Background:	<p>Description: Involved in the transcriptional regulation of genes required for mesoderm differentiation. Probably plays a role in limb pattern formation. Acts as a negative regulator of PML function in cellular senescence. May be required for cardiac atrioventricular canal formation.</p> <p>Gene: TBX2</p>
Molecular Weight:	74kDa
Gene ID:	6909
UniProt:	Q13207
Pathways:	p53 Signaling

Application Details

Application Notes:	WB 1:1000, IF/ICC 1:100-1:500, ELISA(peptide) 1:20000-1:40000
Restrictions:	For Research Use only

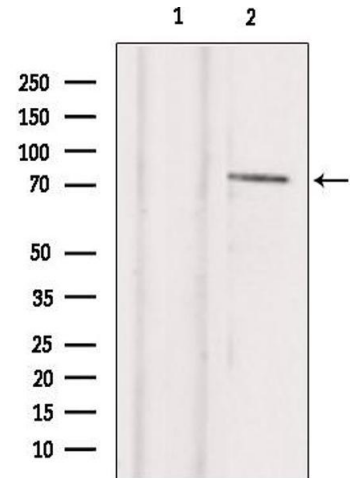
Handling

Format:	Liquid
Concentration:	1 mg/mL
Buffer:	Rabbit IgG in phosphate buffered saline , pH 7.4, 150 mM NaCl, 0.02 % sodium azide and 50 % glycerol.
Preservative:	Sodium azide
Precaution of Use:	This product contains Sodium azide: a POISONOUS AND HAZARDOUS SUBSTANCE which should be handled by trained staff only.
Storage:	-20 °C
Storage Comment:	Store at -20 °C. Stable for 12 months from date of receipt.
Expiry Date:	12 months



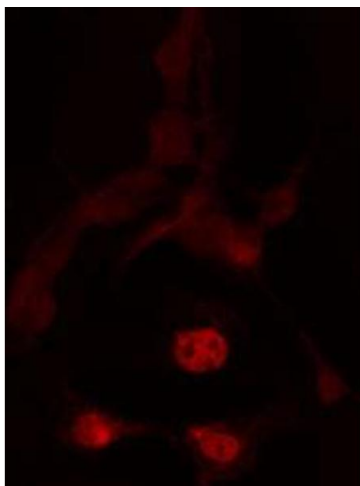
Western Blotting

Image 1. Western blot analysis of TBX2 using HeLa whole cell lysates



Western Blotting

Image 2. Western blot analysis of extracts from hepg2, using TBX2 Antibody. Lane 1 was treated with the blocking peptide.



Immunofluorescence (fixed cells)

Image 3. ABIN6272442 staining HeLa by IF/ICC. The sample were fixed with PFA and permeabilized in 0.1% Triton X-100, then blocked in 10% serum for 45 minutes at 25°C. The primary antibody was diluted at 1/200 and incubated with the sample for 1 hour at 37°C. An Alexa Fluor 594 conjugated goat anti-rabbit IgG (H+L) Ab, diluted at 1/600, was used as the secondary antibody.