

Datasheet for ABIN6265490
anti-T-Box 22 antibody (N-Term)

2 Images

[Go to Product page](#)

Overview

Quantity:	100 µL
Target:	T-Box 22 (TBX22)
Binding Specificity:	N-Term
Reactivity:	Human
Host:	Rabbit
Clonality:	Polyclonal
Conjugate:	This T-Box 22 antibody is un-conjugated
Application:	Western Blotting (WB), ELISA, Immunocytochemistry (ICC), Immunofluorescence (IF)

Product Details

Immunogen:	A synthesized peptide derived from human TBX22, corresponding to a region within N-terminal amino acids.
Isotype:	IgG
Specificity:	TBX22 Antibody detects endogenous levels of total TBX22.
Predicted Reactivity:	Sheep
Purification:	The antiserum was purified by peptide affinity chromatography using SulfoLink™ Coupling Resin (Thermo Fisher Scientific).

Target Details

Target:	T-Box 22 (TBX22)
---------	------------------

Target Details

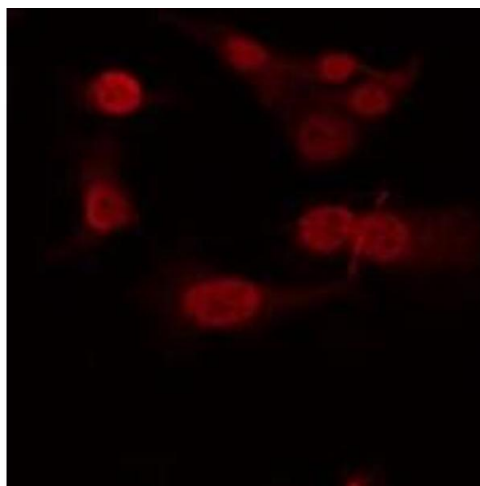
Alternative Name:	TBX22 (TBX22 Products)
Background:	Description: Probable transcriptional regulator involved in developmental processes. This is major determinant crucial to palatogenesis. Gene: TBX22
Molecular Weight:	58kDa
Gene ID:	50945
UniProt:	Q9Y458

Application Details

Application Notes:	WB 1:500-1:2000, IF/ICC 1:100-1:500, ELISA(peptide) 1:20000-1:40000
Restrictions:	For Research Use only

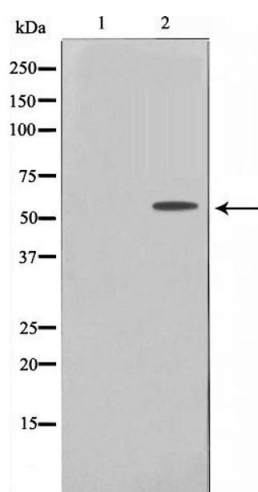
Handling

Format:	Liquid
Concentration:	1 mg/mL
Buffer:	Rabbit IgG in phosphate buffered saline , pH 7.4, 150 mM NaCl, 0.02 % sodium azide and 50 % glycerol.
Preservative:	Sodium azide
Precaution of Use:	This product contains Sodium azide: a POISONOUS AND HAZARDOUS SUBSTANCE which should be handled by trained staff only.
Storage:	-20 °C
Storage Comment:	Store at -20 °C. Stable for 12 months from date of receipt.
Expiry Date:	12 months



Immunofluorescence (fixed cells)

Image 1. ABIN6266935 staining HeLa by IF/ICC. The sample were fixed with PFA and permeabilized in 0.1% Triton X-100, then blocked in 10% serum for 45 minutes at 25°C. The primary antibody was diluted at 1/200 and incubated with the sample for 1 hour at 37°C. An Alexa Fluor 594 conjugated goat anti-rabbit IgG (H+L) Ab, diluted at 1/600, was used as the secondary antibody.



Western Blotting

Image 2. Western blot analysis on Jurkat cell lysate using TBX22 Antibody, *The lane on the left is treated with the antigen-specific peptide.*