

Datasheet for ABIN6265494
anti-TCEAL5 antibody (Internal Region)



[Go to Product page](#)

2 Images

Overview

Quantity:	100 µL
Target:	TCEAL5
Binding Specificity:	Internal Region
Reactivity:	Human, Mouse, Rat
Host:	Rabbit
Clonality:	Polyclonal
Conjugate:	This TCEAL5 antibody is un-conjugated
Application:	Western Blotting (WB), ELISA, Immunocytochemistry (ICC), Immunofluorescence (IF), Immunohistochemistry (IHC)

Product Details

Immunogen:	A synthesized peptide derived from human TCEAL5, corresponding to a region within the internal amino acids.
Isotype:	IgG
Specificity:	TCEAL5 Antibody detects endogenous levels of total TCEAL5.
Predicted Reactivity:	Rabbit,Dog
Purification:	The antiserum was purified by peptide affinity chromatography using SulfoLink™ Coupling Resin (Thermo Fisher Scientific).

Target Details

Target:	TCEAL5
---------	--------

Target Details

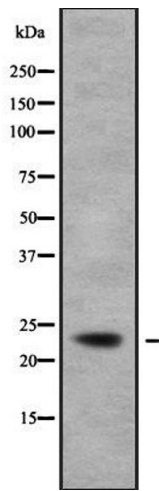
Alternative Name:	TCEAL5 (TCEAL5 Products)
Background:	Description: May be involved in transcriptional regulation. Gene: TCEAL5
Molecular Weight:	23 kDa
Gene ID:	340543
UniProt:	Q5H9L2

Application Details

Application Notes:	WB 1:1000-3000, IF/ICC 1:100-1:500, IHC 1:50-1:200, ELISA(peptide) 1:20000-1:40000
Restrictions:	For Research Use only

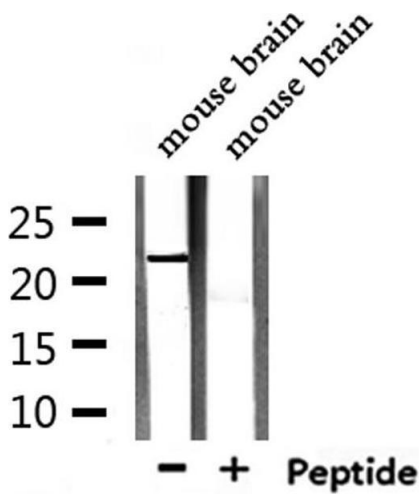
Handling

Format:	Liquid
Concentration:	1 mg/mL
Buffer:	Rabbit IgG in phosphate buffered saline , pH 7.4, 150 mM NaCl, 0.02 % sodium azide and 50 % glycerol.
Preservative:	Sodium azide
Precaution of Use:	This product contains Sodium azide: a POISONOUS AND HAZARDOUS SUBSTANCE which should be handled by trained staff only.
Storage:	-20 °C
Storage Comment:	Store at -20 °C. Stable for 12 months from date of receipt.
Expiry Date:	12 months



Western Blotting

Image 1. Western blot analysis of TCEAL5 using K562 whole cell lysates



Western Blotting

Image 2. Western blot analysis of extracts from mouse brain, using TCEAL5 Antibody.