

Datasheet for ABIN6265500  
**anti-TCF4 antibody (N-Term)**[Go to Product page](#)

## 2 Images

## Overview

Quantity:	100 µL
Target:	TCF4
Binding Specificity:	N-Term
Reactivity:	Human, Mouse, Rat
Host:	Rabbit
Clonality:	Polyclonal
Conjugate:	This TCF4 antibody is un-conjugated
Application:	Western Blotting (WB), ELISA, Immunohistochemistry (IHC)

## Product Details

Immunogen:	A synthesized peptide derived from human TCF4, corresponding to a region within N-terminal amino acids.
Isotype:	IgG
Specificity:	TCF4 Antibody detects endogenous levels of total TCF4.
Predicted Reactivity:	Bovine,Horse,Sheep,Rabbit,Dog
Purification:	The antiserum was purified by peptide affinity chromatography using SulfoLink™ Coupling Resin (Thermo Fisher Scientific).

## Target Details

Target:	TCF4
---------	------

## Target Details

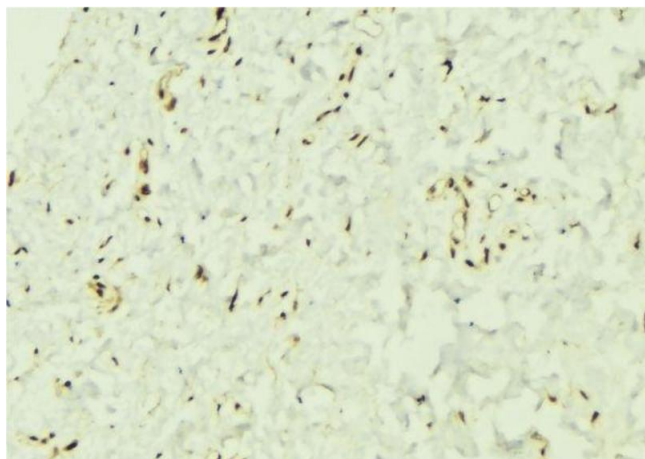
Alternative Name:	TCF4 ( <a href="#">TCF4 Products</a> )
Background:	<p>Description: Transcription factor that binds to the immunoglobulin enhancer Mu-E5/KE5-motif. Involved in the initiation of neuronal differentiation. Activates transcription by binding to the E box (5'-CANNTG-3'). Binds to the E-box present in the somatostatin receptor 2 initiator element (SSTR2-INR) to activate transcription (By similarity). Preferentially binds to either 5'-ACANNTGT-3' or 5'-CCANNTGG-3'.</p> <p>Gene: TCF4</p>
Molecular Weight:	71kDa
Gene ID:	6925
UniProt:	<a href="#">P15884</a>
Pathways:	<a href="#">WNT Signaling</a> , <a href="#">Positive Regulation of Peptide Hormone Secretion</a> , <a href="#">Peptide Hormone Metabolism</a> , <a href="#">Regulation of Hormone Metabolic Process</a> , <a href="#">Carbohydrate Homeostasis</a> , <a href="#">Stem Cell Maintenance</a> , <a href="#">Protein targeting to Nucleus</a>

## Application Details

Application Notes:	WB 1:500-1:2000, IHC 1:50-1:200, ELISA(peptide) 1:20000-1:40000
Restrictions:	For Research Use only

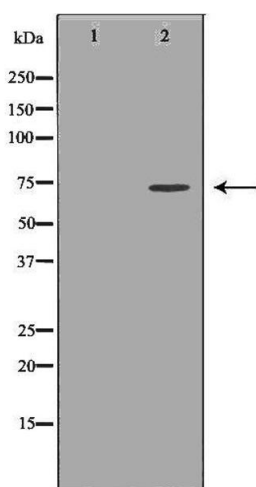
## Handling

Format:	Liquid
Concentration:	1 mg/mL
Buffer:	Rabbit IgG in phosphate buffered saline , pH 7.4, 150 mM NaCl, 0.02 % sodium azide and 50 % glycerol.
Preservative:	Sodium azide
Precaution of Use:	This product contains Sodium azide: a POISONOUS AND HAZARDOUS SUBSTANCE which should be handled by trained staff only.
Storage:	-20 °C
Storage Comment:	Store at -20 °C. Stable for 12 months from date of receipt.
Expiry Date:	12 months



### Immunohistochemistry

**Image 1.** ABIN6276544 at 1/100 staining Mouse muscle tissue by IHC-P. The sample was formaldehyde fixed and a heat mediated antigen retrieval step in citrate buffer was performed. The sample was then blocked and incubated with the antibody for 1.5 hours at 22°C. An HRP conjugated goat anti-rabbit antibody was used as the secondary



### Western Blotting

**Image 2.** Western blot analysis of K562 lysate using TCF4 antibody. The lane on the left is treated with the antigen-specific peptide.