



[Go to Product page](#)

Datasheet for ABIN6265503

## anti-TCL1A antibody (Internal Region)

### 2 Images

#### Overview

Quantity:	100 µL
Target:	TCL1A
Binding Specificity:	Internal Region
Reactivity:	Human, Rat, Mouse
Host:	Rabbit
Clonality:	Polyclonal
Conjugate:	This TCL1A antibody is un-conjugated
Application:	Western Blotting (WB), ELISA, Immunohistochemistry (IHC)

#### Product Details

Immunogen:	A synthesized peptide derived from human TCL1A, corresponding to a region within the internal amino acids.
Isotype:	IgG
Specificity:	TCL1A Antibody detects endogenous levels of total TCL1A.
Predicted Reactivity:	Pig,Bovine,Sheep,Rabbit
Purification:	The antiserum was purified by peptide affinity chromatography using SulfoLink™ Coupling Resin (Thermo Fisher Scientific).

#### Target Details

Target:	TCL1A
---------	-------

## Target Details

---

Alternative Name:	TCL1A ( <a href="#">TCL1A Products</a> )
Background:	Description: Enhances the phosphorylation and activation of AKT1, AKT2 and AKT3. Promotes nuclear translocation of AKT1. Enhances cell proliferation, stabilizes mitochondrial membrane potential and promotes cell survival. Gene: TCL1A
Molecular Weight:	13kDa
Gene ID:	8115
UniProt:	<a href="#">P56279</a>
Pathways:	<a href="#">Stem Cell Maintenance</a>

## Application Details

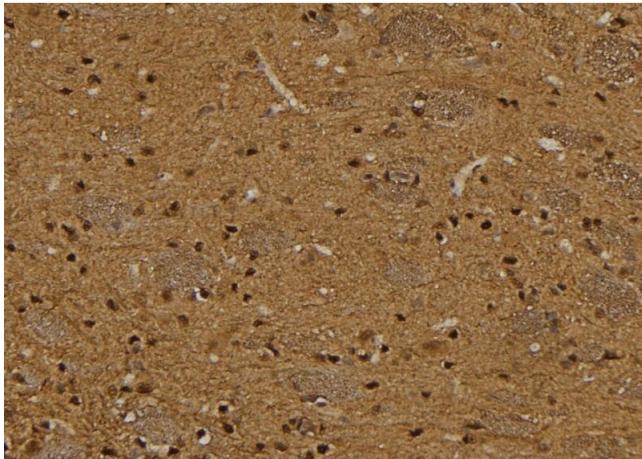
---

Application Notes:	WB 1:500-1:2000, IHC 1:50-1:200, ELISA(peptide) 1:20000-1:40000
Restrictions:	For Research Use only

## Handling

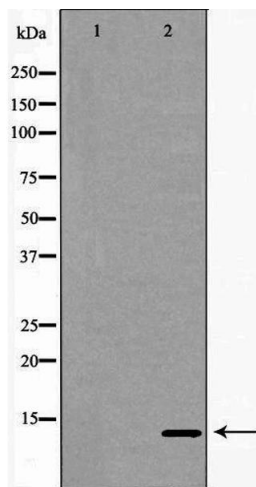
---

Format:	Liquid
Concentration:	1 mg/mL
Buffer:	Rabbit IgG in phosphate buffered saline , pH 7.4, 150 mM NaCl, 0.02 % sodium azide and 50 % glycerol.
Preservative:	Sodium azide
Precaution of Use:	This product contains Sodium azide: a POISONOUS AND HAZARDOUS SUBSTANCE which should be handled by trained staff only.
Storage:	-20 °C
Storage Comment:	Store at -20 °C. Stable for 12 months from date of receipt.
Expiry Date:	12 months



### Immunohistochemistry

**Image 1.** ABIN6276382 at 1/100 staining Rat brain tissue by IHC-P. The sample was formaldehyde fixed and a heat mediated antigen retrieval step in citrate buffer was performed. The sample was then blocked and incubated with the antibody for 1.5 hours at 22°C. An HRP conjugated goat anti-rabbit antibody was used as the secondary



### Western Blotting

**Image 2.** Western blot analysis of Ramos lysate using TCL1A antibody. The lane on the left is treated with the antigen-specific peptide.