

Datasheet for ABIN6265528

**anti-GTF3C3 antibody**[Go to Product page](#)

## 4 Images

## Overview

Quantity:	100 µL
Target:	GTF3C3
Reactivity:	Human, Mouse
Host:	Rabbit
Clonality:	Polyclonal
Conjugate:	This GTF3C3 antibody is un-conjugated
Application:	Western Blotting (WB), ELISA, Immunofluorescence (IF), Immunocytochemistry (ICC)

## Product Details

Immunogen:	A synthesized peptide derived from human TF3C3
Isotype:	IgG
Specificity:	TF3C3 Antibody detects endogenous levels of total TF3C3
Cross-Reactivity:	Human, Mouse (Murine)
Purification:	The antiserum was purified by peptide affinity chromatography using SulfoLink™ Coupling Resin (Thermo Fisher Scientific).

## Target Details

Target:	GTF3C3
Alternative Name:	TF3C3 ( <a href="#">GTF3C3 Products</a> )
Background:	Description: Involved in RNA polymerase III-mediated transcription. Integral, tightly associated

## Target Details

component of the DNA-binding TFIIIC2 subcomplex that directly binds tRNA and virus-associated RNA promoters.

Gene: GTF3C3

Molecular Weight: 101 kDa

Gene ID: 9330

UniProt: [Q9Y5Q9](#)

## Application Details

Application Notes: WB 1:1000-3000, IF/ICC 1:100-1:500

Restrictions: For Research Use only

## Handling

Format: Liquid

Concentration: 1 mg/mL

Buffer: Rabbit IgG in phosphate buffered saline , pH 7.4, 150 mM NaCl, 0.02 % sodium azide and 50 % glycerol.

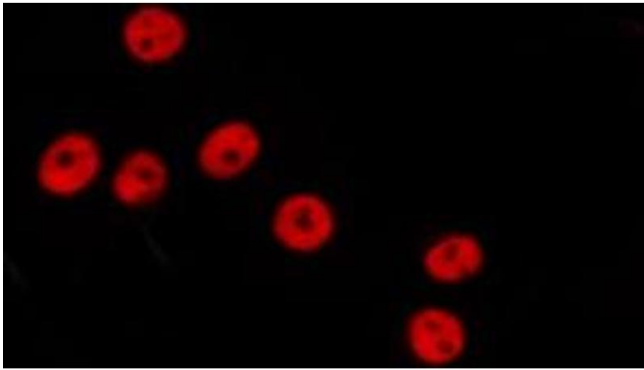
Preservative: Sodium azide

Precaution of Use: This product contains Sodium azide: a POISONOUS AND HAZARDOUS SUBSTANCE which should be handled by trained staff only.

Storage: -20 °C

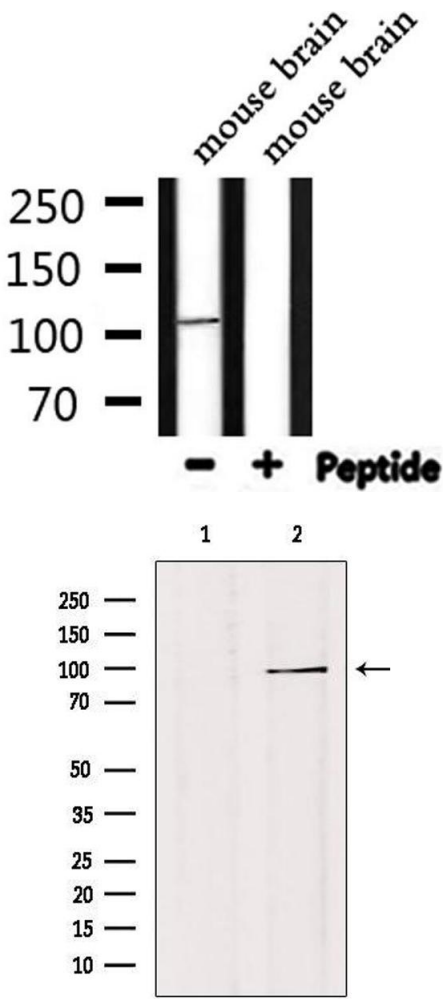
Storage Comment: Store at -20 °C.Stable for 12 months from date of receipt

Expiry Date: 12 months



**Immunofluorescence (fixed cells)**

**Image 1.** ABIN6278642 staining Hela by IF/ICC. The sample were fixed with PFA and permeabilized in 0.1% Triton X-100, then blocked in 10% serum for 45 minutes at 25°C. The primary antibody was diluted at 1/200 and incubated with the sample for 1 hour at 37°C. An Alexa Fluor 594 conjugated goat anti-rabbit IgG (H+L) Ab, diluted at 1/600, was used as the secondary antibody



**Western Blotting**

**Image 2.** Western blot analysis of extracts from mouse brain, using TF3C3 Antibody.

**Western Blotting**

**Image 3.** Western blot analysis of extracts from 293, using TF3C3 Antibody. Lane 1 was treated with the blocking peptide.

Please check the [product details page](#) for more images. Overall 4 images are available for ABIN6265528.