



[Go to Product page](#)

Datasheet for ABIN6265545  
**anti-TGFBR3 antibody (C-Term)**

1 Image

Overview

|                      |                                       |
|----------------------|---------------------------------------|
| Quantity:            | 100 µL                                |
| Target:              | TGFBR3                                |
| Binding Specificity: | C-Term                                |
| Reactivity:          | Human, Mouse, Rat                     |
| Host:                | Rabbit                                |
| Clonality:           | Polyclonal                            |
| Conjugate:           | This TGFBR3 antibody is un-conjugated |
| Application:         | Western Blotting (WB), ELISA          |

Product Details

|                       |   |
|-----------------------|---|
| Immunogen:            | A synthesized peptide derived from human TGF beta Receptor III, corresponding to a region within C-terminal amino acids.  |
| Isotype:              | IgG   |
| Specificity:          | TGF beta Receptor III Antibody detects endogenous levels of total TGF beta Receptor III.                                  |
| Predicted Reactivity: | Pig,Zebrafish,Bovine,Horse,Sheep,Rabbit,Dog,Chicken,Xenopus   |
| Purification:         | The antiserum was purified by peptide affinity chromatography using SulfoLink™ Coupling Resin (Thermo Fisher Scientific). |

Target Details

|         |        |
|---------|--------|
| Target: | TGFBR3 |
|---------|--------|

## Target Details

---

|                   |  |
|-------------------|--|
| Alternative Name: | TGFBR3 ( <a href="#">TGFBR3 Products</a> )   |
| Background:       | Description: Binds to TGF-beta. Could be involved in capturing and retaining TGF-beta for presentation to the signaling receptors.<br>Gene: TGFBR3 |
| Molecular Weight: | 93 kDa   |
| Gene ID:          | 7049   |
| UniProt:          | <a href="#">Q03167</a>   |

## Application Details

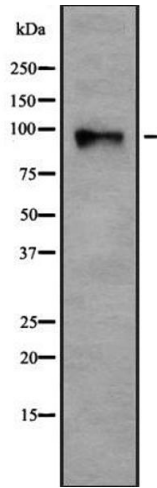
---

|                    |  |
|--------------------|--|
| Application Notes: | WB 1:1000-3000, ELISA(peptide) 1:20000-1:40000 |
| Restrictions:      | For Research Use only                          |

## Handling

---

|                    |  |
|--------------------|--|
| Format:            | Liquid   |
| Concentration:     | 1 mg/mL  |
| Buffer:            | Rabbit IgG in phosphate buffered saline , pH 7.4, 150 mM NaCl, 0.02 % sodium azide and 50 % glycerol.                  |
| Preservative:      | Sodium azide   |
| Precaution of Use: | This product contains Sodium azide: a POISONOUS AND HAZARDOUS SUBSTANCE which should be handled by trained staff only. |
| Storage:           | -20 °C   |
| Storage Comment:   | Store at -20 °C. Stable for 12 months from date of receipt.  |
| Expiry Date:       | 12 months  |



### Western Blotting

**Image 1.** Western blot analysis of TGF  $\beta$  Receptor III using HepG2 whole cell lysates