

Datasheet for ABIN6265546
anti-TGFB2 antibody (C-Term)



[Go to Product page](#)

3 Images

Overview

Quantity:	100 µL
Target:	TGFB2
Binding Specificity:	C-Term
Reactivity:	Human, Mouse, Rat
Host:	Rabbit
Clonality:	Polyclonal
Conjugate:	This TGFB2 antibody is un-conjugated
Application:	Western Blotting (WB), ELISA, Immunohistochemistry (IHC)

Product Details

Immunogen:	A synthesized peptide derived from human TGF beta2, corresponding to a region within C-terminal amino acids.
Isotype:	IgG
Specificity:	TGF beta2 Antibody detects endogenous levels of total TGF beta2.
Predicted Reactivity:	Pig,Zebrafish,Bovine,Horse,Sheep,Rabbit,Dog,Chicken,Xenopus
Purification:	The antiserum was purified by peptide affinity chromatography using SulfoLink™ Coupling Resin (Thermo Fisher Scientific).

Target Details

Target:	TGFB2
---------	-------

Target Details

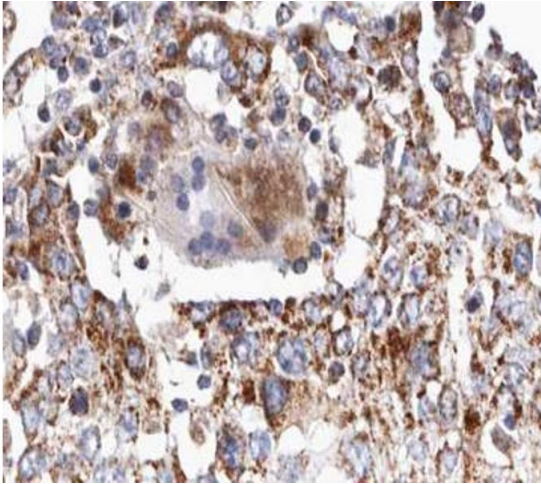
Alternative Name:	TGFB2 (TGFB2 Products)
Background:	Description: TGF-beta 2 has suppressive effects on interleukin-2 dependent T-cell growth. Gene: TGFB2
Molecular Weight:	47kDa
Gene ID:	7042
UniProt:	P61812
Pathways:	Cell-Cell Junction Organization , Production of Molecular Mediator of Immune Response , Protein targeting to Nucleus

Application Details

Application Notes:	IHC 1:50-1:200, WB 1:500-1:2000, ELISA(peptide) 1:20000-1:40000
Restrictions:	For Research Use only

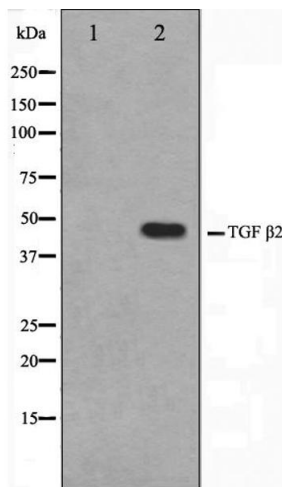
Handling

Format:	Liquid
Concentration:	1 mg/mL
Buffer:	Rabbit IgG in phosphate buffered saline , pH 7.4, 150 mM NaCl, 0.02 % sodium azide and 50 % glycerol.
Preservative:	Sodium azide
Precaution of Use:	This product contains Sodium azide: a POISONOUS AND HAZARDOUS SUBSTANCE which should be handled by trained staff only.
Storage:	-20 °C
Storage Comment:	Store at -20 °C. Stable for 12 months from date of receipt.
Expiry Date:	12 months



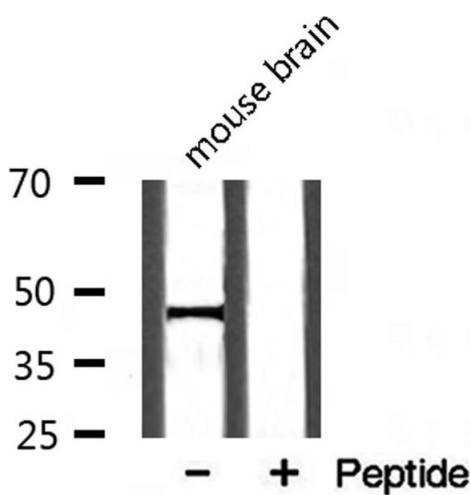
Immunohistochemistry

Image 1. ABIN6266641 at 1/100 staining human lung carcinoma tissue sections by IHC-P. The tissue was formaldehyde fixed and a heat mediated antigen retrieval step in citrate buffer was performed. The tissue was then blocked and incubated with the antibody for 1.5 hours at 22°C. An HRP conjugated goat anti-rabbit antibody was used as the secondary.



Western Blotting

Image 2. Western blot analysis of TGF beta2 Antibody expression in mouse brain tissue lysates. The lane on the left is treated with the antigen-specific peptide.



Western Blotting

Image 3. Western blot analysis on mouse brain lysate using TGF beta2 Antibody