

Datasheet for ABIN6265548

anti-TGFB3 antibody

4 Images

[Go to Product page](#)

Overview

Quantity:	100 µL
Target:	TGFB3
Reactivity:	Human, Rat, Mouse, Monkey
Host:	Rabbit
Clonality:	Polyclonal
Conjugate:	This TGFB3 antibody is un-conjugated
Application:	Western Blotting (WB), Immunohistochemistry (IHC), ELISA, Immunocytochemistry (ICC), Immunofluorescence (IF)

Product Details

Immunogen:	A synthesized peptide derived from human TGFB3
Isotype:	IgG
Specificity:	TGFB3 antibody detects endogenous levels of total TGFB3
Cross-Reactivity:	Human, Monkey, Mouse (Murine), Rat (Rattus)
Purification:	The antiserum was purified by peptide affinity chromatography using SulfoLink™ Coupling Resin (Thermo Fisher Scientific).

Target Details

Target:	TGFB3
Alternative Name:	TGFB3 (TGFB3 Products)

Target Details

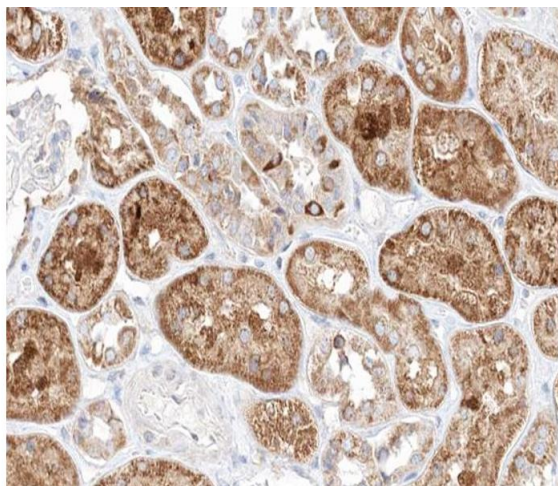
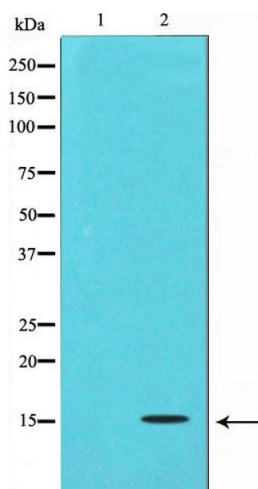
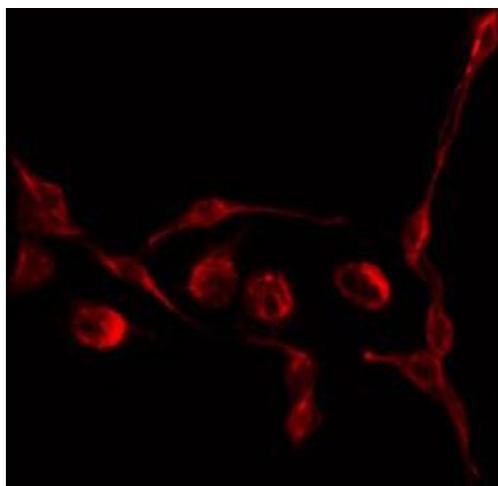
Background:	Description: Involved in embryogenesis and cell differentiation. Gene: TGFB3
Molecular Weight:	13kDa
Gene ID:	7043
UniProt:	P10600
Pathways:	Cell-Cell Junction Organization , Production of Molecular Mediator of Immune Response , Protein targeting to Nucleus

Application Details

Application Notes:	WB: 1:500~1:3000 IHC: 1:50~1:200, IF/ICC 1:100-1:500
Restrictions:	For Research Use only

Handling

Format:	Liquid
Concentration:	1 mg/mL
Buffer:	Rabbit IgG in phosphate buffered saline , pH 7.4, 150 mM NaCl, 0.02 % sodium azide and 50 % glycerol.
Preservative:	Sodium azide
Precaution of Use:	This product contains Sodium azide: a POISONOUS AND HAZARDOUS SUBSTANCE which should be handled by trained staff only.
Storage:	-20 °C
Storage Comment:	Store at -20 °C.Stable for 12 months from date of receipt
Expiry Date:	12 months



Immunofluorescence (fixed cells)

Image 1. ABIN6266642 staining COS7 by IF/ICC. The sample were fixed with PFA and permeabilized in 0.1% Triton X-100, then blocked in 10% serum for 45 minutes at 25°C. The primary antibody was diluted at 1/200 and incubated with the sample for 1 hour at 37°C. An Alexa Fluor 594 conjugated goat anti-rabbit IgG (H+L) Ab, diluted at 1/600, was used as the secondary antibody.

Western Blotting

Image 2. Western blot analysis on COS7 cell lysate using TGFβ3 Antibody, The lane on the left is treated with the antigen-specific peptide.

Immunohistochemistry

Image 3. ABIN6266642 at 1/100 staining human kidney tissue sections by IHC-P. The tissue was formaldehyde fixed and a heat mediated antigen retrieval step in citrate buffer was performed. The tissue was then blocked and incubated with the antibody for 1.5 hours at 22°C. An HRP conjugated goat anti-rabbit antibody was used as the secondary.

Please check the [product details page](#) for more images. Overall 4 images are available for ABIN6265548.