

Datasheet for ABIN6265553

**anti-TGIF2LX antibody****2** Images[Go to Product page](#)

## Overview

Quantity:	100 µL
Target:	TGIF2LX
Reactivity:	Human, Mouse, Rat
Host:	Rabbit
Clonality:	Polyclonal
Conjugate:	This TGIF2LX antibody is un-conjugated
Application:	Western Blotting (WB), ELISA, Immunohistochemistry (IHC)

## Product Details

Immunogen:	A synthesized peptide derived from human TGIF2LX
Isotype:	IgG
Specificity:	TGIF2LX Antibody detects endogenous levels of total TGIF2LX
Cross-Reactivity:	Human, Mouse (Murine), Rat (Rattus)
Purification:	The antiserum was purified by peptide affinity chromatography using SulfoLink™ Coupling Resin (Thermo Fisher Scientific).

## Target Details

Target:	TGIF2LX
Alternative Name:	TGIF2LX ( <a href="#">TGIF2LX Products</a> )
Background:	Description: May have a transcription role in testis.

## Target Details

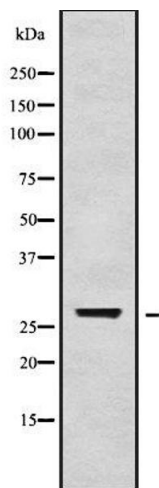
	Gene: TGIF2LX
Molecular Weight:	27 kDa
Gene ID:	90316
UniProt:	<a href="#">Q8IUE1</a>

## Application Details

Application Notes:	WB 1:1000-3000 IHC 1:200
Restrictions:	For Research Use only

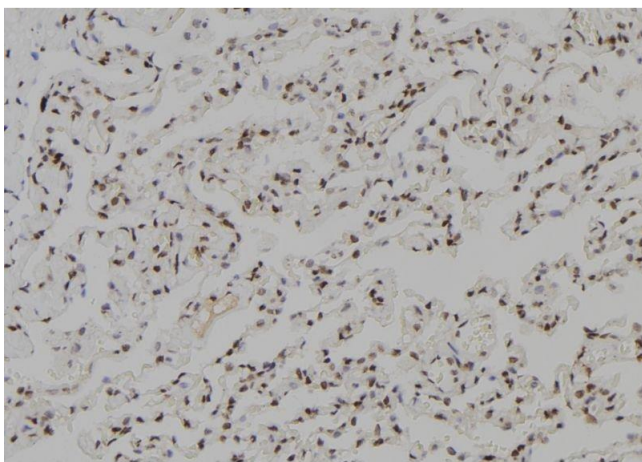
## Handling

Format:	Liquid
Concentration:	1 mg/mL
Buffer:	Rabbit IgG in phosphate buffered saline , pH 7.4, 150 mM NaCl, 0.02 % sodium azide and 50 % glycerol.
Preservative:	Sodium azide
Precaution of Use:	This product contains Sodium azide: a POISONOUS AND HAZARDOUS SUBSTANCE which should be handled by trained staff only.
Storage:	-20 °C
Storage Comment:	Store at -20 °C.Stable for 12 months from date of receipt
Expiry Date:	12 months



### Western Blotting

**Image 1.** Western blot analysis of TGIF2LX using HepG2 whole cell lysates



### Immunohistochemistry

**Image 2.** ABIN6279505 at 1/100 staining Human lung tissue by IHC-P. The sample was formaldehyde fixed and a heat mediated antigen retrieval step in citrate buffer was performed. The sample was then blocked and incubated with the antibody for 1.5 hours at 22°C. An HRP conjugated goat anti-rabbit antibody was used as the secondary