



[Go to Product page](#)

Datasheet for ABIN6265572

anti-TIMM22 antibody (Internal Region)

2 Images

Overview

Quantity:	100 µL
Target:	TIMM22
Binding Specificity:	Internal Region
Reactivity:	Human, Mouse, Rat
Host:	Rabbit
Clonality:	Polyclonal
Conjugate:	This TIMM22 antibody is un-conjugated
Application:	Western Blotting (WB), Immunohistochemistry (IHC), Immunocytochemistry (ICC), Immunofluorescence (IF)

Product Details

Immunogen:	A synthesized peptide derived from human TIM22, corresponding to a region within the internal amino acids.
Isotype:	IgG
Specificity:	TIM22 Antibody detects endogenous levels of total TIM22.
Predicted Reactivity:	Pig,Zebrafish,Bovine,Horse,Sheep,Rabbit,Dog,Chicken,Xenopus
Purification:	The antiserum was purified by peptide affinity chromatography using SulfoLink™ Coupling Resin (Thermo Fisher Scientific).

Target Details

Target:	TIMM22
---------	--------

Target Details

Alternative Name:	TIMM22 (TIMM22 Products)
Background:	<p>Description: Essential core component of the TIM22 complex, a complex that mediates the import and insertion of multi-pass transmembrane proteins into the mitochondrial inner membrane. In the TIM22 complex, it constitutes the voltage-activated and signal-gated channel. Forms a twin-pore translocase that uses the membrane potential as external driving force in 2 voltage-dependent steps (By similarity).</p> <p>Gene: TIMM22</p>
Molecular Weight:	20 kDa
Gene ID:	29928
UniProt:	Q9Y584

Application Details

Application Notes:	WB 1:500-1:2000, IHC 1:50-1:200, IF/ICC 1:100-1:500
Restrictions:	For Research Use only

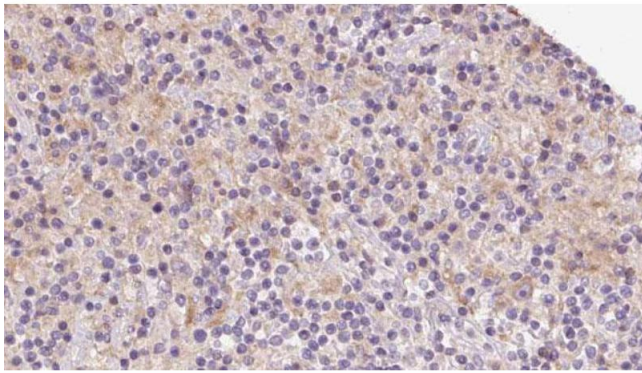
Handling

Format:	Liquid
Concentration:	1 mg/mL
Buffer:	Rabbit IgG in phosphate buffered saline , pH 7.4, 150 mM NaCl, 0.02 % sodium azide and 50 % glycerol.
Preservative:	Sodium azide
Precaution of Use:	This product contains Sodium azide: a POISONOUS AND HAZARDOUS SUBSTANCE which should be handled by trained staff only.
Storage:	-20 °C
Storage Comment:	Store at -20 °C. Stable for 12 months from date of receipt.
Expiry Date:	12 months



Western Blotting

Image 1. Western blot analysis of extracts of HepG2 cells, using TIM22 antibody.



Immunohistochemistry

Image 2. ABIN6273080 at 1/100 staining Human lymph cancer tissue by IHC-P. The sample was formaldehyde fixed and a heat mediated antigen retrieval step in citrate buffer was performed. The sample was then blocked and incubated with the antibody for 1.5 hours at 22°C. An HRP conjugated goat anti-rabbit antibody was used as the secondary.