



[Go to Product page](#)

Datasheet for ABIN6265574
anti-TIMELESS antibody (C-Term)

1 Image

Overview

Quantity:	100 µL
Target:	TIMELESS
Binding Specificity:	C-Term
Reactivity:	Human, Mouse, Rat
Host:	Rabbit
Clonality:	Polyclonal
Conjugate:	This TIMELESS antibody is un-conjugated
Application:	Western Blotting (WB), ELISA

Product Details

Immunogen:	A synthesized peptide derived from human TIMELESS, corresponding to a region within C-terminal amino acids.
Isotype:	IgG
Specificity:	TIMELESS Antibody detects endogenous levels of total TIMELESS.
Predicted Reactivity:	Pig
Purification:	The antiserum was purified by peptide affinity chromatography using SulfoLink™ Coupling Resin (Thermo Fisher Scientific).

Target Details

Target:	TIMELESS
---------	----------

Target Details

Alternative Name: TIMELESS ([TIMELESS Products](#))

Background: Description: Plays an important role in the control of DNA replication, maintenance of replication fork stability, maintenance of genome stability throughout normal DNA replication and in the regulation of the circadian clock. Involved in the determination of period length and in the DNA damage-dependent phase advancing of the circadian clock. Negatively regulates CLOCK|NPAS2-ARTNL/BMAL1|ARTNL2/BMAL2-induced transactivation of PER1 possibly via translocation of PER1 into the nucleus. Forms a complex with TIPIN and this complex regulates DNA replication processes under both normal and stress conditions, stabilizes replication forks and influences both CHEK1 phosphorylation and the intra-S phase checkpoint in response to genotoxic stress. Timeless promotes TIPIN nuclear localization. Involved in cell survival after DNA damage or replication stress. May be specifically required for the ATR-CHEK1 pathway in the replication checkpoint induced by hydroxyurea or ultraviolet light. May also play an important role in epithelial cell morphogenesis and formation of branching tubules.

Gene: TIMELESS

Molecular Weight: 139 kDa

Gene ID: 8914

UniProt: [Q9UNS1](#)

Pathways: [Protein targeting to Nucleus](#), [Photoperiodism](#)

Application Details

Application Notes: WB 1:1000-3000, ELISA(peptide) 1:20000-1:40000

Restrictions: For Research Use only

Handling

Format: Liquid

Concentration: 1 mg/mL

Buffer: Rabbit IgG in phosphate buffered saline , pH 7.4, 150 mM NaCl, 0.02 % sodium azide and 50 % glycerol.

Preservative: Sodium azide

Precaution of Use: This product contains Sodium azide: a POISONOUS AND HAZARDOUS SUBSTANCE which should be handled by trained staff only.

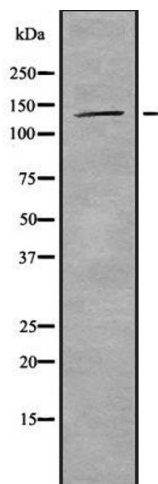
Handling

Storage: -20 °C

Storage Comment: Store at -20 °C. Stable for 12 months from date of receipt.

Expiry Date: 12 months

Images



Western Blotting

Image 1. Western blot analysis of TIMELESS using COLO205 whole cell lysates