

Datasheet for ABIN6265587

anti-PLIN3 antibody

4 Images

1 Publication

[Go to Product page](#)

Overview

Quantity:	100 µL
Target:	PLIN3
Reactivity:	Human, Mouse, Rat
Host:	Rabbit
Clonality:	Polyclonal
Conjugate:	This PLIN3 antibody is un-conjugated
Application:	Western Blotting (WB), Immunohistochemistry (IHC), Immunofluorescence (IF), Immunocytochemistry (ICC)

Product Details

Immunogen:	A synthesized peptide derived from human TIP47
Isotype:	IgG
Specificity:	TIP47 Antibody detects endogenous levels of total TIP47.
Purification:	The antiserum was purified by peptide affinity chromatography using SulfoLink™ Coupling Resin (Thermo Fisher Scientific).

Target Details

Target:	PLIN3
Alternative Name:	PLIN3 (PLIN3 Products)
Background:	Description: Required for the transport of mannose 6-phosphate receptors (MPR) from endosomes to the trans-Golgi network.

Target Details

	Gene: PLIN3
Molecular Weight:	47 kDa
Gene ID:	10226
UniProt:	O60664

Application Details

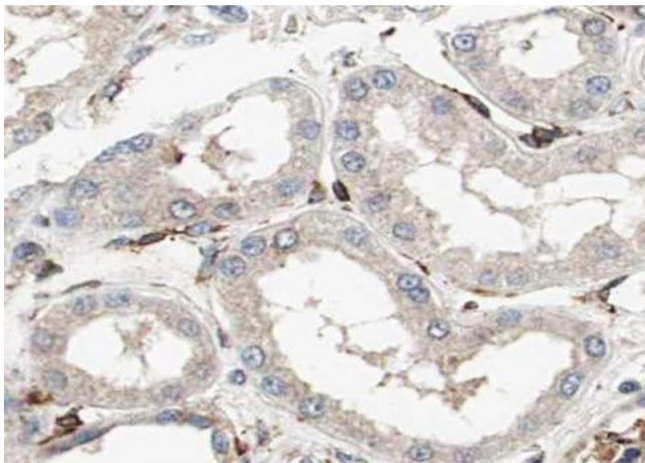
Application Notes:	WB 1:500-1:2000, IHC 1:50-1:200, IF/ICC 1:100-1:500
Restrictions:	For Research Use only

Handling

Format:	Liquid
Concentration:	1 mg/mL
Buffer:	Rabbit IgG in phosphate buffered saline , pH 7.4, 150 mM NaCl, 0.02 % sodium azide and 50 % glycerol.
Preservative:	Sodium azide
Precaution of Use:	This product contains Sodium azide: a POISONOUS AND HAZARDOUS SUBSTANCE which should be handled by trained staff only.
Storage:	-20 °C
Storage Comment:	Store at -20 °C. Stable for 12 months from date of receipt.
Expiry Date:	12 months

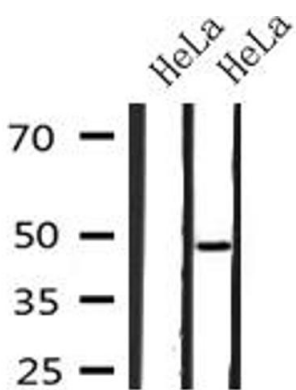
Publications

Product cited in:	Li, Zhang, Sun, Sun, Shi, Liu, Liu: "MicroRNA-181a regulates epithelial-mesenchymal transition by targeting PTEN in drug-resistant lung adenocarcinoma cells." in: International journal of oncology , Vol. 47, Issue 4, pp. 1379-92, (2016) (PubMed).
-------------------	---



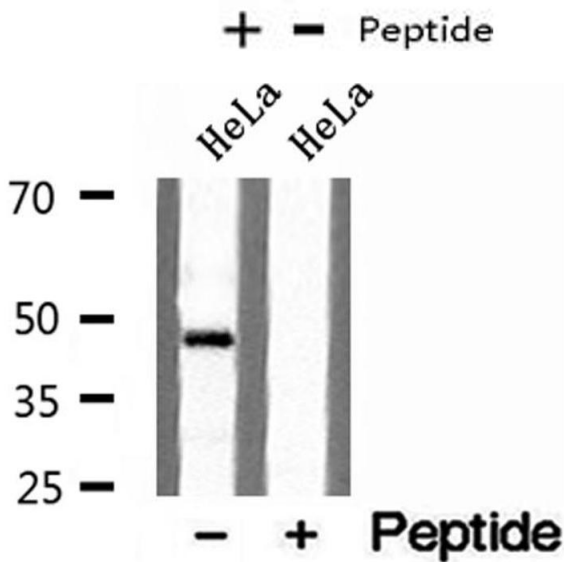
Immunohistochemistry

Image 1. ABIN6272983 at 1/100 staining Mouse kidney tissue by IHC-P. The sample was formaldehyde fixed and a heat mediated antigen retrieval step in citrate buffer was performed. The sample was then blocked and incubated with the antibody for 1.5 hours at 22°C. An HRP conjugated goat anti-rabbit antibody was used as the secondary.



Western Blotting

Image 2. Western blot analysis on HeLa cells lysate using TIP47 Antibody



Western Blotting

Image 3. Western blot analysis of extracts of HeLa cells, using TIP47 antibody.

Please check the [product details page](#) for more images. Overall 4 images are available for ABIN6265587.