



[Go to Product page](#)

Datasheet for ABIN6265604
anti-TLR8 antibody (C-Term)

4 Images

Overview

Quantity:	100 µL
Target:	TLR8
Binding Specificity:	C-Term
Reactivity:	Human, Mouse, Rat
Host:	Rabbit
Clonality:	Polyclonal
Conjugate:	This TLR8 antibody is un-conjugated
Application:	Western Blotting (WB), Immunohistochemistry (IHC), ELISA, Immunofluorescence (IF), Immunocytochemistry (ICC)

Product Details

Immunogen:	A synthesized peptide derived from human TLR8, corresponding to a region within C-terminal amino acids.
Isotype:	IgG
Specificity:	TLR8 Antibody detects endogenous levels of total TLR8.
Predicted Reactivity:	Pig,Bovine,Horse,Dog
Purification:	The antiserum was purified by peptide affinity chromatography using SulfoLink™ Coupling Resin (Thermo Fisher Scientific).

Target Details

Target:	TLR8
---------	------

Target Details

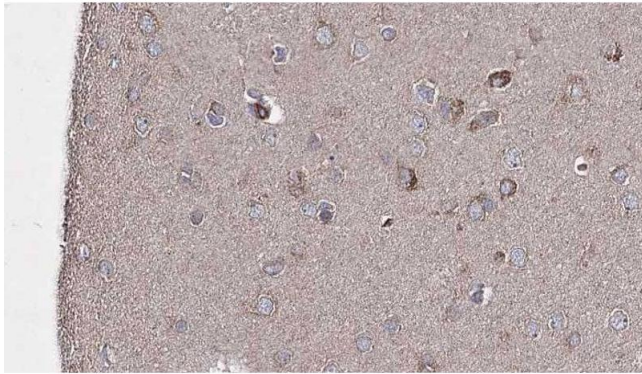
Alternative Name:	TLR8 (TLR8 Products)
Background:	Description: Key component of innate and adaptive immunity. TLRs (Toll-like receptors) control host immune response against pathogens through recognition of molecular patterns specific to microorganisms. Acts via MYD88 and TRAF6, leading to NF-kappa-B activation, cytokine secretion and the inflammatory response. Gene: TLR8
Molecular Weight:	115kDa
Gene ID:	51311
UniProt:	Q9NR97
Pathways:	TLR Signaling , Activation of Innate immune Response , Toll-Like Receptors Cascades

Application Details

Application Notes:	WB 1:500-1:2000, IHC 1:50-1:200, IF/ICC 1:100-500, ELISA(peptide) 1:20000-1:40000
Restrictions:	For Research Use only

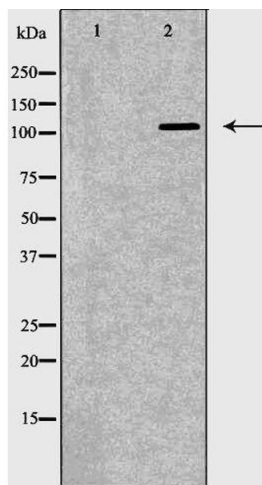
Handling

Format:	Liquid
Concentration:	1 mg/mL
Buffer:	Rabbit IgG in phosphate buffered saline , pH 7.4, 150 mM NaCl, 0.02 % sodium azide and 50 % glycerol.
Preservative:	Sodium azide
Precaution of Use:	This product contains Sodium azide: a POISONOUS AND HAZARDOUS SUBSTANCE which should be handled by trained staff only.
Storage:	-20 °C
Storage Comment:	Store at -20 °C. Stable for 12 months from date of receipt.
Expiry Date:	12 months



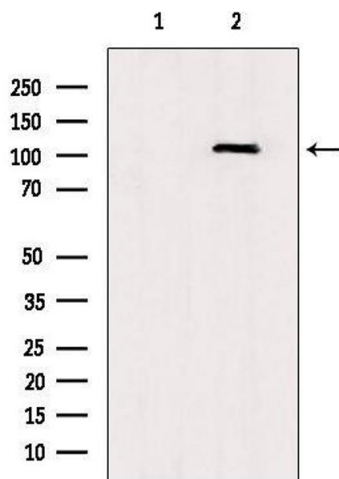
Immunohistochemistry

Image 1. ABIN6276691 at 1/100 staining Human brain cancer tissue by IHC-P. The sample was formaldehyde fixed and a heat mediated antigen retrieval step in citrate buffer was performed. The sample was then blocked and incubated with the antibody for 1.5 hours at 22°C. An HRP conjugated goat anti-rabbit antibody was used as the secondary



Western Blotting

Image 2. Western blot analysis of NCI-H460 lysate using TLR8 antibody. The lane on the left is treated with the antigen-specific peptide.



Western Blotting

Image 3. Western blot analysis of extracts from rat brain, using TLR8 Antibody. Lane 1 was treated with the antigen-specific peptide.

Please check the [product details page](#) for more images. Overall 4 images are available for ABIN6265604.