

Datasheet for ABIN6265607
anti-ANO9 antibody (Internal Region)[Go to Product page](#)

4 Images

Overview

Quantity:	100 µL
Target:	ANO9
Binding Specificity:	Internal Region
Reactivity:	Human, Mouse
Host:	Rabbit
Clonality:	Polyclonal
Conjugate:	This ANO9 antibody is un-conjugated
Application:	Immunohistochemistry (IHC), ELISA, Immunofluorescence (IF), Western Blotting (WB), Immunocytochemistry (ICC)

Product Details

Immunogen:	A synthesized peptide derived from human ANO9, corresponding to a region within the internal amino acids.
Isotype:	IgG
Specificity:	ANO9 Antibody detects endogenous levels of total ANO9.
Purification:	The antiserum was purified by peptide affinity chromatography using SulfoLink™ Coupling Resin (Thermo Fisher Scientific).

Target Details

Target:	ANO9
Alternative Name:	ANO9 (ANO9 Products)

Target Details

Background:	Description: Has calcium-dependent phospholipid scramblase activity, scrambles phosphatidylserine, phosphatidylcholine and galactosylceramide (By similarity). Does not exhibit calcium-activated chloride channel (CaCC) activity. Can inhibit the activity of ANO1. Gene: ANO9
-------------	---

Molecular Weight:	90kDa
-------------------	-------

Gene ID:	338440
----------	--------

UniProt:	A1A5B4
----------	------------------------

Application Details

Application Notes:	IHC 1:50-1:200, IF/ICC 1:100-1:500, WB 1:500-1:2000, ELISA(peptide) 1:20000-1:40000
--------------------	---

Restrictions:	For Research Use only
---------------	-----------------------

Handling

Format:	Liquid
---------	--------

Concentration:	1 mg/mL
----------------	---------

Buffer:	Rabbit IgG in phosphate buffered saline , pH 7.4, 150 mM NaCl, 0.02 % sodium azide and 50 % glycerol.
---------	---

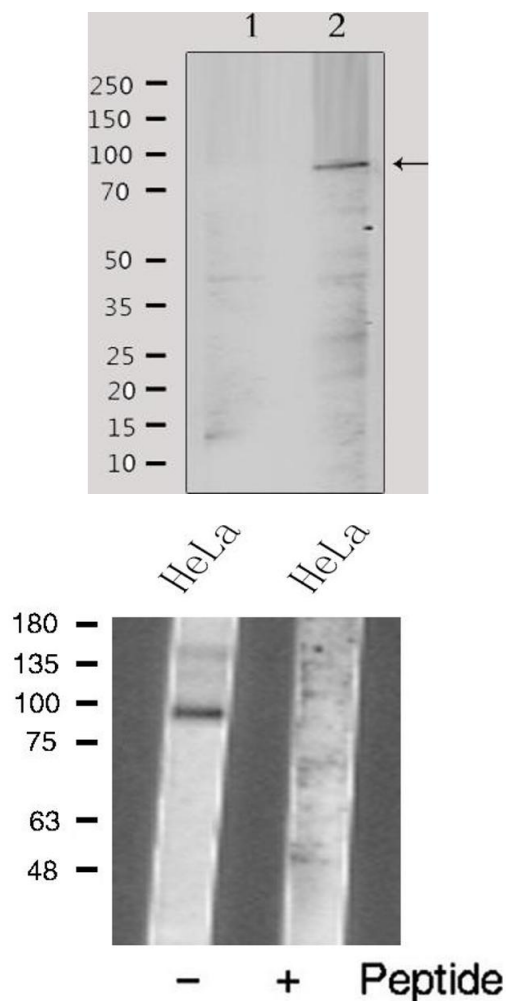
Preservative:	Sodium azide
---------------	--------------

Precaution of Use:	This product contains Sodium azide: a POISONOUS AND HAZARDOUS SUBSTANCE which should be handled by trained staff only.
--------------------	--

Storage:	-20 °C
----------	--------

Storage Comment:	Store at -20 °C. Stable for 12 months from date of receipt.
------------------	---

Expiry Date:	12 months
--------------	-----------

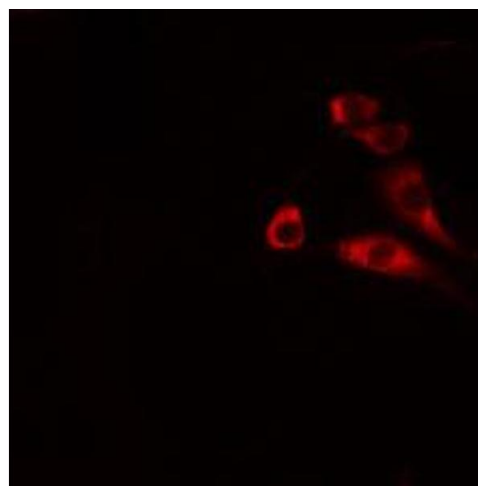


Western Blotting

Image 1. Western blot analysis of extracts from mouse brain, using TM16J Antibody. Lane 1 was treated with the antigen-specific peptide.

Western Blotting

Image 2. Western blot analysis of TM16J Antibody expression in HeLa cells lysates. The lane on the right is treated with the antigen-specific peptide.



Immunofluorescence (fixed cells)

Image 3. ABIN6266680 staining MCF-7 cells by IF/ICC. The sample were fixed with PFA and permeabilized in 0.1% Triton X-100, then blocked in 10% serum for 45 minutes at 25°C. The primary antibody was diluted at 1/200 and incubated with the sample for 1 hour at 37°C. An Alexa Fluor 594 conjugated goat anti-rabbit IgG (H+L) antibody (Cat.# S0006), diluted at 1/600, was used as secondary antibody.

Please check the [product details page](#) for more images. Overall 4 images are available for ABIN6265607.