

Datasheet for ABIN6265636

anti-DcR1 antibody

3 Images

[Go to Product page](#)

Overview

Quantity:	100 µL
Target:	DcR1 (TNFRSF10C)
Reactivity:	Human, Rat
Host:	Rabbit
Clonality:	Polyclonal
Conjugate:	This DcR1 antibody is un-conjugated
Application:	Western Blotting (WB), ELISA, Immunohistochemistry (IHC)

Product Details

Immunogen:	A synthesized peptide derived from human TNFRSF10C
Isotype:	IgG
Specificity:	TNFRSF10C Antibody detects endogenous levels of total TNFRSF10C
Cross-Reactivity:	Human, Rat (Rattus)
Purification:	The antiserum was purified by peptide affinity chromatography using SulfoLink™ Coupling Resin (Thermo Fisher Scientific).

Target Details

Target:	DcR1 (TNFRSF10C)
Alternative Name:	TNFRSF10C (TNFRSF10C Products)
Background:	Description: Receptor for the cytotoxic ligand TRAIL. Lacks a cytoplasmic death domain and

Target Details

hence is not capable of inducing apoptosis. May protect cells against TRAIL mediated apoptosis by competing with TRAIL-R1 and R2 for binding to the ligand.

Gene: TNFRSF10C

Molecular Weight: 27kDa

Gene ID: 8794

UniProt: [O14798](#)

Pathways: [Apoptosis](#)

Application Details

Application Notes: WB 1:500-1:2000 IHC 1:50-1:200

Restrictions: For Research Use only

Handling

Format: Liquid

Concentration: 1 mg/mL

Buffer: Rabbit IgG in phosphate buffered saline , pH 7.4, 150 mM NaCl, 0.02 % sodium azide and 50 % glycerol.

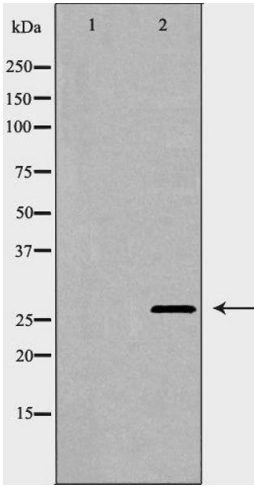
Preservative: Sodium azide

Precaution of Use: This product contains Sodium azide: a POISONOUS AND HAZARDOUS SUBSTANCE which should be handled by trained staff only.

Storage: -20 °C

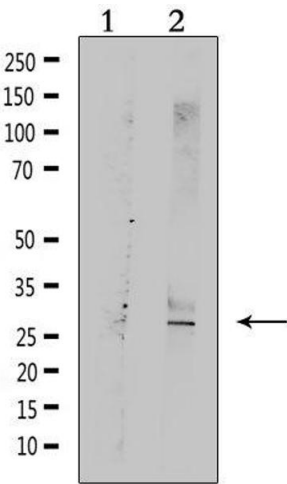
Storage Comment: Store at -20 °C.Stable for 12 months from date of receipt

Expiry Date: 12 months



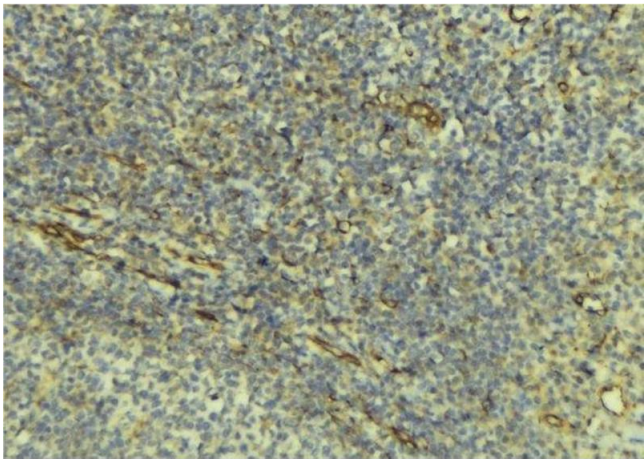
Western Blotting

Image 1. Western blot analysis of human spleen lysate using TNFRSF10C antibody. The lane on the left is treated with the antigen-specific peptide.



Western Blotting

Image 2. Western blot analysis of extracts from rat muscle, using TNFRSF10C Antibody. Lane 1 was treated with the antigen-specific peptide.



Immunohistochemistry

Image 3. ABIN6276540 at 1/100 staining Human lymph tissue by IHC-P. The sample was formaldehyde fixed and a heat mediated antigen retrieval step in citrate buffer was performed. The sample was then blocked and incubated with the antibody for 1.5 hours at 22°C. An HRP conjugated goat anti-rabbit antibody was used as the secondary