



Datasheet for ABIN6265672  
**anti-TOP1MT antibody (Internal Region)**



[Go to Product page](#)

1 Image

Overview

Quantity:	100 µL
Target:	TOP1MT
Binding Specificity:	Internal Region
Reactivity:	Human, Mouse, Rat
Host:	Rabbit
Clonality:	Polyclonal
Conjugate:	This TOP1MT antibody is un-conjugated
Application:	Western Blotting (WB), ELISA

Product Details

Immunogen:	A synthesized peptide derived from human TOP1MT, corresponding to a region within the internal amino acids.
Isotype:	IgG
Specificity:	TOP1MT Antibody detects endogenous levels of total TOP1MT.
Predicted Reactivity:	Pig,Zebrafish,Horse,Sheep,Chicken
Purification:	The antiserum was purified by peptide affinity chromatography using SulfoLink™ Coupling Resin (Thermo Fisher Scientific).

Target Details

Target:	TOP1MT
---------	--------

## Target Details

---

Alternative Name: TOP1MT ([TOP1MT Products](#))

---

Background: Description: Releases the supercoiling and torsional tension of DNA introduced during duplication of mitochondrial DNA by transiently cleaving and rejoining one strand of the DNA duplex. Introduces a single-strand break via transesterification at a target site in duplex DNA. The scissile phosphodiester is attacked by the catalytic tyrosine of the enzyme, resulting in the formation of a DNA-(3'-phosphotyrosyl)-enzyme intermediate and the expulsion of a 5'-OH DNA strand. The free DNA strand then rotates around the intact phosphodiester bond on the opposing strand, thus removing DNA supercoils. Finally, in the religation step, the DNA 5'-OH attacks the covalent intermediate to expel the active-site tyrosine and restore the DNA phosphodiester backbone (By similarity).

Gene: TOP1MT

---

Molecular Weight: 70 kDa

---

Gene ID: 116447

---

UniProt: [Q969P6](#)

---

## Application Details

---

Application Notes: WB 1:1000-3000, ELISA(peptide) 1:20000-1:40000

---

Restrictions: For Research Use only

---

## Handling

---

Format: Liquid

---

Concentration: 1 mg/mL

---

Buffer: Rabbit IgG in phosphate buffered saline , pH 7.4, 150 mM NaCl, 0.02 % sodium azide and 50 % glycerol.

---

Preservative: Sodium azide

---

Precaution of Use: This product contains Sodium azide: a POISONOUS AND HAZARDOUS SUBSTANCE which should be handled by trained staff only.

---

Storage: -20 °C

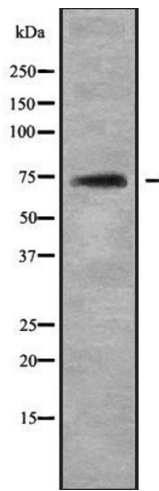
---

Storage Comment: Store at -20 °C. Stable for 12 months from date of receipt.

---

Expiry Date: 12 months

---



### Western Blotting

**Image 1.** Western blot analysis of TOP1MT using COLO205 whole cell lysates