



[Go to Product page](#)

Datasheet for ABIN6265675

anti-TOPBP1 antibody (Internal Region)

1 Image

Overview

Quantity:	100 µL
Target:	TOPBP1
Binding Specificity:	Internal Region
Reactivity:	Human, Mouse
Host:	Rabbit
Clonality:	Polyclonal
Conjugate:	This TOPBP1 antibody is un-conjugated
Application:	Western Blotting (WB), ELISA

Product Details

Immunogen:	A synthesized peptide derived from human TOPBP1, corresponding to a region within the internal amino acids.
Isotype:	IgG
Specificity:	TOPBP1 Antibody detects endogenous levels of total TOPBP1.
Predicted Reactivity:	Pig,Bovine,Horse,Sheep,Rabbit,Dog
Purification:	The antiserum was purified by peptide affinity chromatography using SulfoLink™ Coupling Resin (Thermo Fisher Scientific).

Target Details

Target:	TOPBP1
---------	--------

Target Details

Alternative Name: TOPBP1 ([TOPBP1 Products](#))

Background: Description: Required for DNA replication. Plays a role in the rescue of stalled replication forks and checkpoint control. Binds double-stranded DNA breaks and nicks as well as single-stranded DNA. Recruits the SWI/SNF chromatin remodeling complex to E2F1-responsive promoters. Down-regulates E2F1 activity and inhibits E2F1-dependent apoptosis during G1/S transition and after DNA damage. Induces a large increase in the kinase activity of ATR (PubMed:16530042).
Gene: TOPBP1

Molecular Weight: 173kDa

Gene ID: 11073

UniProt: [Q92547](#)

Pathways: [Chromatin Binding](#)

Application Details

Application Notes: WB 1:500-1:2000, ELISA(peptide) 1:20000-1:40000

Restrictions: For Research Use only

Handling

Format: Liquid

Concentration: 1 mg/mL

Buffer: Rabbit IgG in phosphate buffered saline , pH 7.4, 150 mM NaCl, 0.02 % sodium azide and 50 % glycerol.

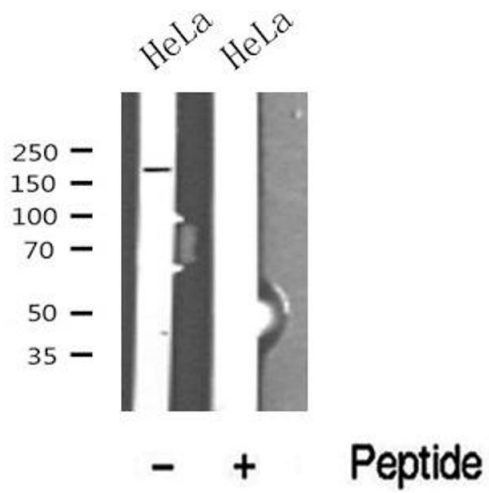
Preservative: Sodium azide

Precaution of Use: This product contains Sodium azide: a POISONOUS AND HAZARDOUS SUBSTANCE which should be handled by trained staff only.

Storage: -20 °C

Storage Comment: Store at -20 °C. Stable for 12 months from date of receipt.

Expiry Date: 12 months



Western Blotting

Image 1. Western blot analysis of TOPBP1 in lysates of HeLa?, using TOPBP1 Antibody(ABIN6272843).