

Datasheet for ABIN6265687

**anti-Tryptophan Hydroxylase 1 antibody (Internal Region)**

5 Images

[Go to Product page](#)

## Overview

Quantity:	100 µL
Target:	Tryptophan Hydroxylase 1 (TPH1)
Binding Specificity:	Internal Region
Reactivity:	Human, Mouse, Rat
Host:	Rabbit
Clonality:	Polyclonal
Application:	Western Blotting (WB), ELISA, Immunohistochemistry (IHC), Immunofluorescence (IF), Immunocytochemistry (ICC)

## Product Details

Immunogen:	A synthesized peptide derived from human Tryptophan Hydroxylase, corresponding to a region within the internal amino acids.
Isotype:	IgG
Specificity:	Tryptophan Hydroxylase Antibody detects endogenous levels of total Tryptophan Hydroxylase.
Predicted Reactivity:	Bovine,Horse,Sheep,Rabbit,Chicken
Purification:	The antiserum was purified by peptide affinity chromatography using SulfoLink™ Coupling Resin (Thermo Fisher Scientific).

## Target Details

Target:	Tryptophan Hydroxylase 1 (TPH1)
Alternative Name:	TPH1 ( <a href="#">TPH1 Products</a> )

## Target Details

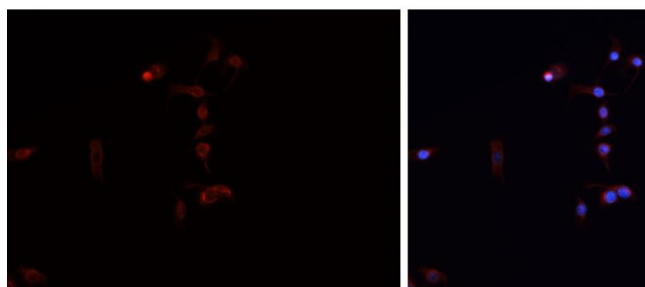
Background:	Description: L-tryptophan + tetrahydrobiopterin + O <sub>2</sub> = 5-hydroxy-L-tryptophan + 4a-hydroxytetrahydrobiopterin. Gene: TPH1
Molecular Weight:	55kDa
Gene ID:	7166
UniProt:	<a href="#">P17752</a>
Pathways:	<a href="#">Feeding Behaviour</a>

## Application Details

Application Notes:	WB 1:500-1:2000, IHC 1:50-1:200, IF/ICC 1:100-1:500, ELISA(peptide) 1:20000-1:40000
Restrictions:	For Research Use only

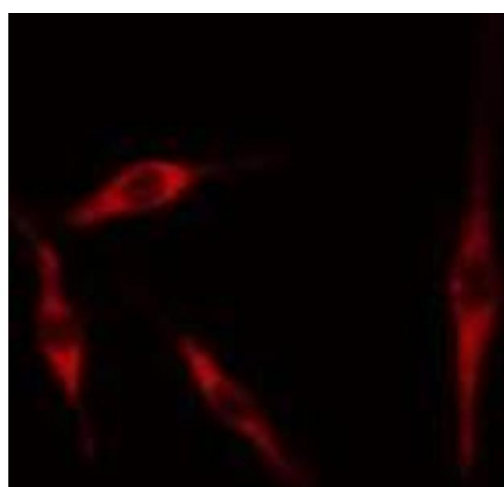
## Handling

Format:	Liquid
Concentration:	1 mg/mL
Buffer:	Rabbit IgG in phosphate buffered saline , pH 7.4, 150 mM NaCl, 0.02 % sodium azide and 50 % glycerol.
Preservative:	Sodium azide
Precaution of Use:	This product contains Sodium azide: a POISONOUS AND HAZARDOUS SUBSTANCE which should be handled by trained staff only.
Storage:	-20 °C
Storage Comment:	Store at -20 °C. Stable for 12 months from date of receipt.
Expiry Date:	12 months



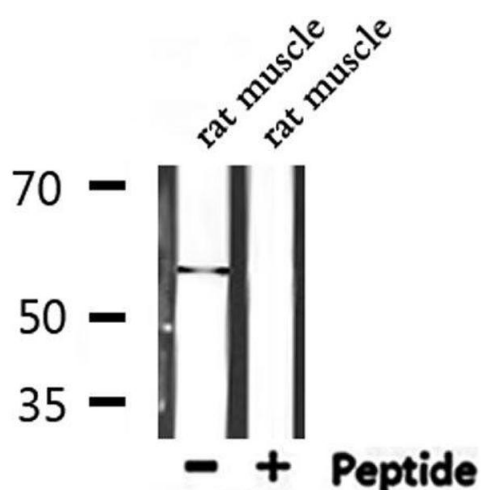
#### Immunofluorescence (fixed cells)

**Image 1.** ABIN6276729 staining HEPG2 cells by IF/ICC. The sample were fixed with PFA and permeabilized in 0.1% Triton X-100, then blocked in 10% serum for 45 minutes at 25°C. The primary antibody was diluted at 1/200 and incubated with the sample for 1 hour at 37°C. An Alexa Fluor 594 conjugated goat anti-rabbit IgG (H+L) antibody (Cat.# S0006), diluted at 1/600 was used as secondary antibody



#### Immunofluorescence (fixed cells)

**Image 2.** ABIN6276729 staining 293 cells by IF/ICC. The sample were fixed with PFA and permeabilized in 0.1% Triton X-100, then blocked in 10% serum for 45 minutes at 25°C. The primary antibody was diluted at 1/200 and incubated with the sample for 1 hour at 37°C. An Alexa Fluor 594 conjugated goat anti-rabbit IgG (H+L) antibody (Cat.# S0006), diluted at 1/600, was used as secondary antibody



#### Western Blotting

**Image 3.** Western blot analysis of extracts from rat muscle, using TPH1 Antibody.

Please check the [product details page](#) for more images. Overall 5 images are available for ABIN6265687.