

Datasheet for ABIN6265689
anti-TPI1 antibody (C-Term)

3 Images

[Go to Product page](#)

Overview

Quantity:	100 µL
Target:	TPI1
Binding Specificity:	C-Term
Reactivity:	Human, Mouse, Rat
Host:	Rabbit
Clonality:	Polyclonal
Application:	Western Blotting (WB), Immunohistochemistry (IHC), Immunofluorescence (IF), Immunocytochemistry (ICC)

Product Details

Immunogen:	A synthesized peptide derived from human TPI1, corresponding to a region within C-terminal amino acids.
Isotype:	IgG
Specificity:	TPI1 Antibody detects endogenous levels of total TPI1.
Predicted Reactivity:	Pig,Bovine,Horse,Rabbit,Dog,Chicken,Xenopus
Purification:	The antiserum was purified by peptide affinity chromatography using SulfoLink™ Coupling Resin (Thermo Fisher Scientific).

Target Details

Target:	TPI1
Alternative Name:	TPI1 (TPI1 Products)

Target Details

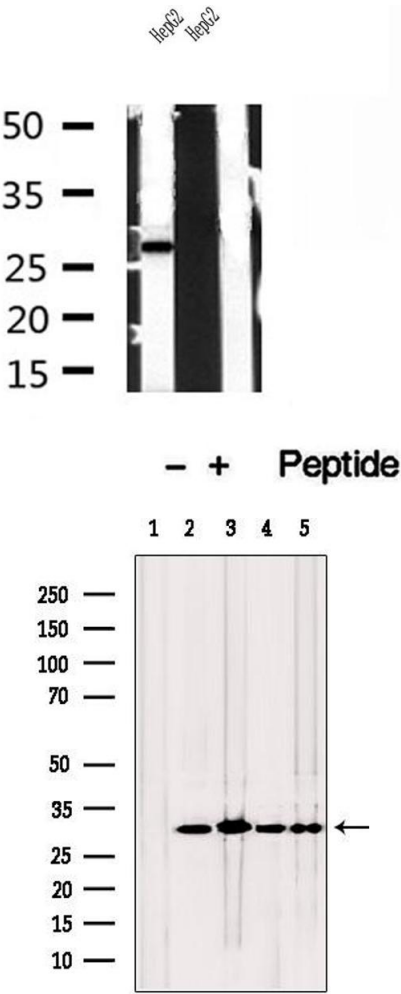
Background:	Description: D-glyceraldehyde 3-phosphate = glycerone phosphate. Gene: TPI1
Molecular Weight:	27kDa
Gene ID:	7167
UniProt:	P60174
Pathways:	Cell RedoxHomeostasis

Application Details

Application Notes:	WB 1:500-1:2000, IHC 1:50-1:200, IF/ICC 1:100-1:500
Restrictions:	For Research Use only

Handling

Format:	Liquid
Concentration:	1 mg/mL
Buffer:	Rabbit IgG in phosphate buffered saline , pH 7.4, 150 mM NaCl, 0.02 % sodium azide and 50 % glycerol.
Preservative:	Sodium azide
Precaution of Use:	This product contains Sodium azide: a POISONOUS AND HAZARDOUS SUBSTANCE which should be handled by trained staff only.
Storage:	-20 °C
Storage Comment:	Store at -20 °C. Stable for 12 months from date of receipt.
Expiry Date:	12 months

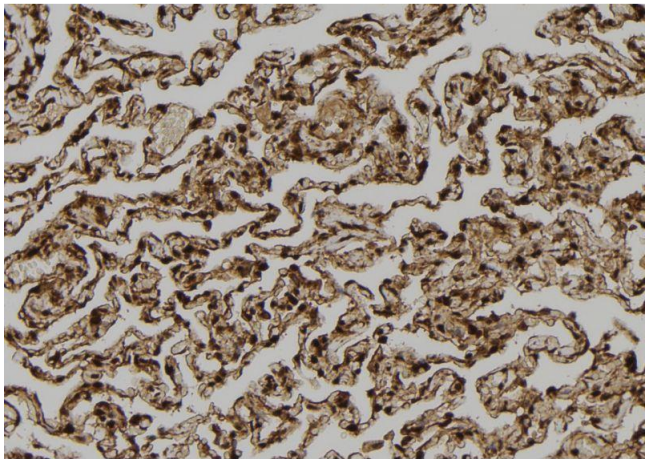


Western Blotting

Image 1. Western blot analysis of extracts of HepG2 cells, using TPI1 antibody.

Western Blotting

Image 2. Western blot analysis of extracts from various samples, using TPI1 antibody. Lane 1: rat heart treated with blocking peptide. Lane 2: Rat heart; Lane 3: Mouse brain; Lane 4: Hela; Lane 5: Hepg2;



Immunohistochemistry

Image 3. ABIN6272867 at 1/100 staining Human lung tissue by IHC-P. The sample was formaldehyde fixed and a heat mediated antigen retrieval step in citrate buffer was performed. The sample was then blocked and incubated with the antibody for 1.5 hours at 22°C. An HRP conjugated goat anti-rabbit antibody was used as the secondary.