

Datasheet for ABIN6265723

**anti-TRHR antibody**

## 2 Images

[Go to Product page](#)

## Overview

Quantity:	100 µL
Target:	TRHR
Reactivity:	Human, Rat, Mouse
Host:	Rabbit
Clonality:	Polyclonal
Conjugate:	This TRHR antibody is un-conjugated
Application:	Western Blotting (WB), ELISA, Immunofluorescence (IF), Immunocytochemistry (ICC)

## Product Details

Immunogen:	A synthesized peptide derived from human TRHR
Isotype:	IgG
Specificity:	TRHR Antibody detects endogenous levels of TRHR
Cross-Reactivity:	Human, Mouse (Murine), Rat (Rattus)
Purification:	The antiserum was purified by peptide affinity chromatography using SulfoLink™ Coupling Resin (Thermo Fisher Scientific).

## Target Details

Target:	TRHR
Alternative Name:	TRHR ( <a href="#">TRHR Products</a> )
Background:	Description: Receptor for thyrotropin-releasing hormone. This receptor is mediated by G

## Target Details

proteins which activate a phosphatidylinositol-calcium second messenger system.

Gene: TRHR

Molecular Weight: 50kDa

Gene ID: 7201

UniProt: [P34981](#)

## Application Details

Application Notes: WB 1:500-1:2000 IF/ICC 1:100-1:500

Restrictions: For Research Use only

## Handling

Format: Liquid

Concentration: 1 mg/mL

Buffer: Rabbit IgG in phosphate buffered saline , pH 7.4, 150 mM NaCl, 0.02 % sodium azide and 50 % glycerol.

Preservative: Sodium azide

Precaution of Use: This product contains Sodium azide: a POISONOUS AND HAZARDOUS SUBSTANCE which should be handled by trained staff only.

Storage: -20 °C

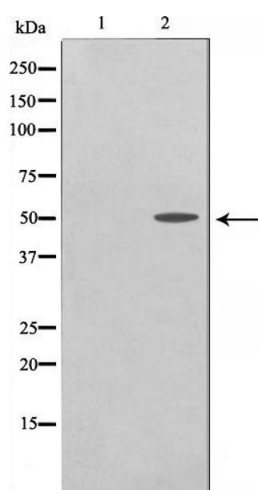
Storage Comment: Store at -20 °C.Stable for 12 months from date of receipt

Expiry Date: 12 months



#### Immunofluorescence (fixed cells)

**Image 1.** ABIN6267021 staining A-431 cells by IF/ICC. The sample were fixed with PFA and permeabilized in 0.1% Triton X-100, then blocked in 10% serum for 45 minutes at 25°C. The primary antibody was diluted at 1/200 and incubated with the sample for 1 hour at 37°C. An Alexa Fluor 594 conjugated goat anti-rabbit IgG (H+L) antibody (Cat.# S0006), diluted at 1/600, was used as secondary antibody.



#### Western Blotting

**Image 2.** Western blot analysis on COS7 cell lysate using TRHR Antibody. The lane on the left is treated with the antigen-specific peptide.