

Datasheet for ABIN6265728
anti-TRIM16 antibody (N-Term)[Go to Product page](#)

2 Images

Overview

Quantity:	100 µL
Target:	TRIM16
Binding Specificity:	N-Term
Reactivity:	Human, Mouse, Rat
Host:	Rabbit
Clonality:	Polyclonal
Conjugate:	This TRIM16 antibody is un-conjugated
Application:	ELISA, Western Blotting (WB), Immunohistochemistry (IHC)

Product Details

Immunogen:	A synthesized peptide derived from human TRIM16, corresponding to a region within N-terminal amino acids.
Isotype:	IgG
Specificity:	TRIM16 Antibody detects endogenous levels of total TRIM16.
Purification:	The antiserum was purified by peptide affinity chromatography using SulfoLink™ Coupling Resin (Thermo Fisher Scientific).

Target Details

Target:	TRIM16
Alternative Name:	TRIM16 (TRIM16 Products)

Target Details

Background:	Description: May play a role in the regulation of keratinocyte differentiation. Gene: TRIM16
Molecular Weight:	63kDa
Gene ID:	10626
UniProt:	O95361
Pathways:	Retinoic Acid Receptor Signaling Pathway , Response to Growth Hormone Stimulus , Growth Factor Binding

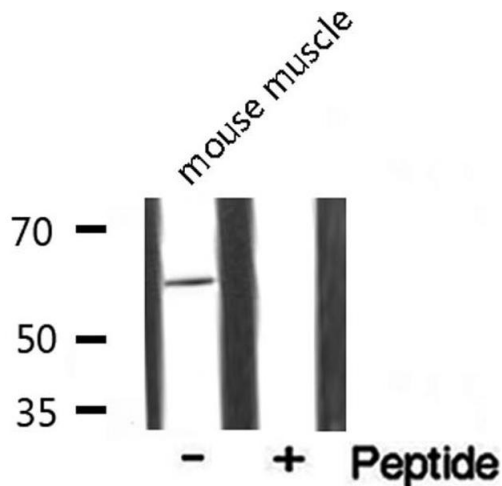
Application Details

Application Notes:	IHC 1:50-1:200, WB 1:1000, ELISA(peptide) 1:20000-1:40000
Restrictions:	For Research Use only

Handling

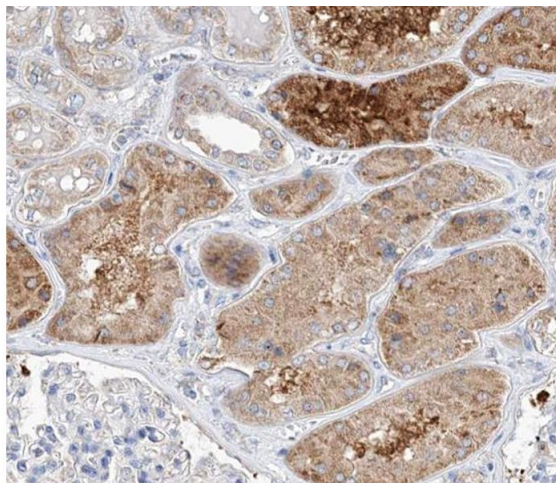
Format:	Liquid
Concentration:	1 mg/mL
Buffer:	Rabbit IgG in phosphate buffered saline , pH 7.4, 150 mM NaCl,
Storage:	-20 °C
Storage Comment:	Store at -20 °C. Stable for 12 months from date of receipt.
Expiry Date:	12 months

Images



Western Blotting

Image 1. Western blot analysis of TRIM16 Antibody expression in Mouse muscle tissue lysates. The lane on the right is treated with the antigen-specific peptide.



Immunohistochemistry

Image 2. ABIN6266730 at 1/100 staining human kidney tissue sections by IHC-P. The tissue was formaldehyde fixed and a heat mediated antigen retrieval step in citrate buffer was performed. The tissue was then blocked and incubated with the antibody for 1.5 hours at 22°C. An HRP conjugated goat anti-rabbit antibody was used as the secondary.