

Datasheet for ABIN6265786

anti-TTL antibody**3** Images[Go to Product page](#)

Overview

Quantity:	100 µL
Target:	TTL
Reactivity:	Human, Mouse, Rat
Host:	Rabbit
Clonality:	Polyclonal
Conjugate:	This TTL antibody is un-conjugated
Application:	Western Blotting (WB), Immunohistochemistry (IHC)

Product Details

Immunogen:	A synthesized peptide derived from human TTL.
Isotype:	IgG
Specificity:	TTL antibody detects endogenous levels of TTL.
Cross-Reactivity:	Human, Mouse (Murine), Rat (Rattus)
Purification:	The antiserum was purified by peptide affinity chromatography using SulfoLink™ Coupling Resin (Thermo Fisher Scientific).

Target Details

Target:	TTL
Alternative Name:	TTL (TTL Products)
Background:	Description: Polyglutamylase which preferentially modifies alpha-tubulin. Mediates tubulin

Target Details

polyglutamylation in cilia. Involved in the side-chain elongation step of the polyglutamylation reaction rather than in the initiation step. Generates long side-chains. Generates polyglutamylation of CGAS, leading to impair the DNA-binding activity of CGAS.
Gene: TTLL6

Molecular Weight: 43-45 kDa

Gene ID: 284076

UniProt: [Q8N841](#)

Pathways: [Regulation of Cell Size](#)

Application Details

Application Notes: WB 1:500-1:2000, IHC 1:50-1:200

Restrictions: For Research Use only

Handling

Format: Liquid

Concentration: 1 mg/mL

Buffer: Rabbit IgG in phosphate buffered saline , pH 7.4, 150 mM NaCl, 0.02 % sodium azide and 50 % glycerol.

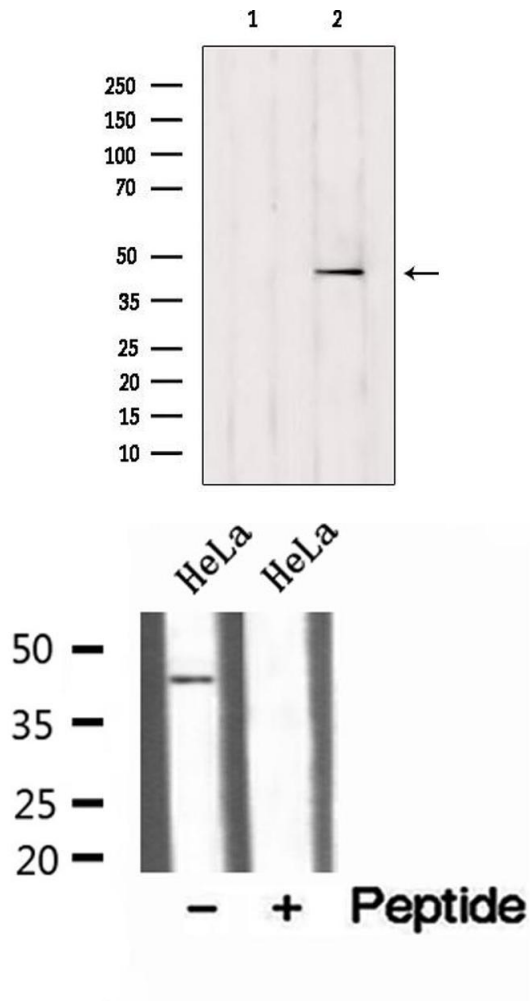
Preservative: Sodium azide

Precaution of Use: This product contains Sodium azide: a POISONOUS AND HAZARDOUS SUBSTANCE which should be handled by trained staff only.

Storage: -20 °C

Storage Comment: Store at -20 °C.Stable for 12 months from date of receipt

Expiry Date: 12 months

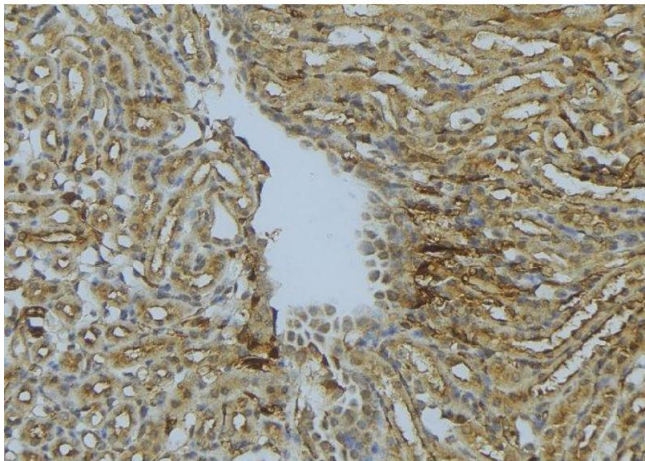


Western Blotting

Image 1. Western blot analysis of extracts from mouse brain, using TTL antibody. Lane 1 was treated with the blocking peptide.

Western Blotting

Image 2. Western blot analysis of extracts of HeLa cells, using TTL antibody.



Immunohistochemistry

Image 3. ABIN6273022 at 1/100 staining Mouse kidney tissue by IHC-P. The sample was formaldehyde fixed and a heat mediated antigen retrieval step in citrate buffer was performed. The sample was then blocked and incubated with the antibody for 1.5 hours at 22°C. An HRP conjugated goat anti-rabbit antibody was used as the secondary