

Datasheet for ABIN6265801
anti-alpha Tubulin antibody[Go to Product page](#)

4 Images

1 Publication

Overview

Quantity:	100 µL
Target:	alpha Tubulin (TUBA1)
Reactivity:	Human, Mouse, Rat
Host:	Rabbit
Clonality:	Polyclonal
Conjugate:	This alpha Tubulin antibody is un-conjugated
Application:	Western Blotting (WB), ELISA, Immunohistochemistry (IHC), Immunofluorescence (IF), Immunocytochemistry (ICC)

Product Details

Immunogen:	A synthesized peptide derived from human Tubulin alpha
Isotype:	IgG
Specificity:	Tubulin alpha Antibody detects endogenous levels of Tubulin alpha
Cross-Reactivity:	Human, Mouse (Murine), Rat (Rattus)
Purification:	The antiserum was purified by peptide affinity chromatography using SulfoLink™ Coupling Resin (Thermo Fisher Scientific).

Target Details

Target:	alpha Tubulin (TUBA1)
Alternative Name:	Tubulin alpha (TUBA1 Products)

Target Details

Background:	Description: Tubulin is the major constituent of microtubules. It binds two moles of GTP, one at an exchangeable site on the beta chain and one at a non-exchangeable site on the alpha chain. Gene: TUBA1A
Molecular Weight:	50kDa
Gene ID:	7846
UniProt:	Q71U36 , P68363
Pathways:	Microtubule Dynamics

Application Details

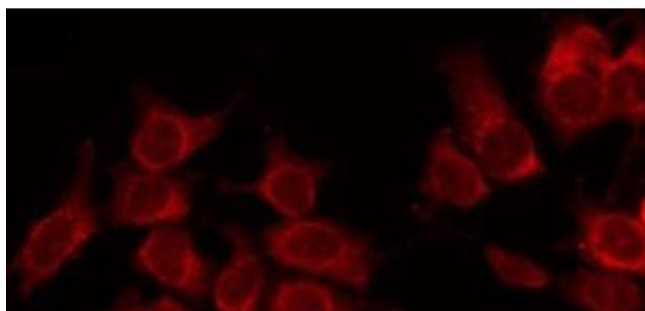
Application Notes:	WB 1:500-1:2000 IHC 1:50-1:200 IF/ICC 1:100-1:500
Restrictions:	For Research Use only

Handling

Format:	Liquid
Concentration:	1 mg/mL
Buffer:	Rabbit IgG in phosphate buffered saline , pH 7.4, 150 mM NaCl, 0.02 % sodium azide and 50 % glycerol.
Preservative:	Sodium azide
Precaution of Use:	This product contains Sodium azide: a POISONOUS AND HAZARDOUS SUBSTANCE which should be handled by trained staff only.
Storage:	-20 °C
Storage Comment:	Store at -20 °C.Stable for 12 months from date of receipt
Expiry Date:	12 months

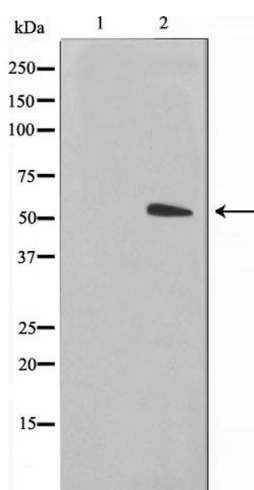
Publications

Product cited in:	Tang, Peng, Huang, Xie, Chen, Shen, Gao, You, Xie, Chen: "Neoisoliquiritigenin Inhibits Tumor Progression by Targeting GRP78- β - catenin Signaling in Breast Cancer." in: Current cancer drug targets , Vol. 18, Issue 4, pp. 390-399, (2018) (PubMed).
-------------------	---



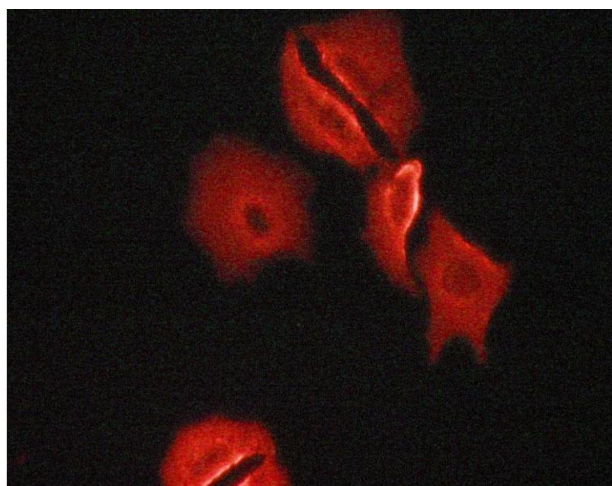
Immunofluorescence (fixed cells)

Image 1. ABIN6266839 staining NIH-3T3 by IF/ICC. The sample were fixed with PFA and permeabilized in 0.1% Triton X-100, then blocked in 10% serum for 45 minutes at 25°C. The primary antibody was diluted at 1/200 and incubated with the sample for 1 hour at 37°C. An Alexa Fluor 594 conjugated goat anti-rabbit IgG (H+L) Ab, diluted at 1/600, was used as the secondary antibody.



Western Blotting

Image 2. Western blot analysis on NIH-3T3 cell lysate using Tubulin alpha Antibody. The lane on the left is treated with the antigen-specific peptide.



Immunofluorescence (fixed cells)

Image 3. Tubulin alpha staining Human fetal heart cells by ICC/IF. Cells were fixed with PFA and permeabilized in 0.1% saponin prior to blocking in 10% serum for 45 minutes at 37°C. The primary antibody was diluted 1/400 and incubated with the sample for 1 hour at 37°C. A Alexa Fluor® 594 conjugated goat polyclonal to rabbit IgG (H+L), diluted 1/600 was used as secondary antibody.

Please check the [product details page](#) for more images. Overall 4 images are available for ABIN6265801.