

Datasheet for ABIN6265808  
**anti-NPRL2 antibody (C-Term)**[Go to Product page](#)

## 1 Image

## Overview

Quantity:	100 µL
Target:	NPRL2
Binding Specificity:	C-Term
Reactivity:	Human, Mouse, Rat
Host:	Rabbit
Clonality:	Polyclonal
Conjugate:	This NPRL2 antibody is un-conjugated
Application:	Western Blotting (WB), ELISA, Immunohistochemistry (IHC)

## Product Details

Immunogen:	A synthesized peptide derived from human TUSC4, corresponding to a region within C-terminal amino acids.
Isotype:	IgG
Specificity:	TUSC4 Antibody detects endogenous levels of total TUSC4.
Predicted Reactivity:	Pig,Zebrafish,Bovine,Horse,Sheep,Rabbit,Dog,Chicken
Purification:	The antiserum was purified by peptide affinity chromatography using SulfoLink™ Coupling Resin (Thermo Fisher Scientific).

## Target Details

Target:	NPRL2
---------	-------

## Target Details

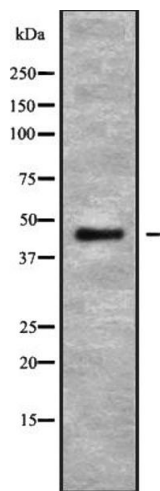
Alternative Name:	NPRL2 ( <a href="#">NPRL2 Products</a> )
Background:	<p>Description: As a component of the GATOR1 complex functions as an inhibitor of the amino acid-sensing branch of the TORC1 pathway. The GATOR1 complex strongly increases GTP hydrolysis by RRAGA and RRAGB within RRAGC-containing heterodimers, thereby deactivating RRAGs, releasing mTORC1 from lysosomal surface and inhibiting mTORC1 signaling. The GATOR1 complex is negatively regulated by GATOR2 the other GATOR subcomplex in this amino acid-sensing branch of the TORC1 pathway.</p> <p>Gene: NPRL2</p>
Molecular Weight:	44 kDa
Gene ID:	10641
UniProt:	<a href="#">Q8WTW4</a>

## Application Details

Application Notes:	WB 1:1000-3000, IHC 1:50-1:200, ELISA(peptide) 1:20000-1:40000
Restrictions:	For Research Use only

## Handling

Format:	Liquid
Concentration:	1 mg/mL
Buffer:	Rabbit IgG in phosphate buffered saline , pH 7.4, 150 mM NaCl, 0.02 % sodium azide and 50 % glycerol.
Preservative:	Sodium azide
Precaution of Use:	This product contains Sodium azide: a POISONOUS AND HAZARDOUS SUBSTANCE which should be handled by trained staff only.
Storage:	-20 °C
Storage Comment:	Store at -20 °C. Stable for 12 months from date of receipt.
Expiry Date:	12 months



Western Blotting

**Image 1.** Western blot analysis of TUSC4 using HepG2 whole cell lysates