

Datasheet for ABIN6265841  
**anti-UBA7 antibody (C-Term)**[Go to Product page](#)

## 4 Images

## Overview

Quantity:	100 µL
Target:	UBA7
Binding Specificity:	C-Term
Reactivity:	Human
Host:	Rabbit
Clonality:	Polyclonal
Conjugate:	This UBA7 antibody is un-conjugated
Application:	Western Blotting (WB), ELISA, Immunohistochemistry (IHC), Immunofluorescence (IF), Immunocytochemistry (ICC)

## Product Details

Immunogen:	A synthesized peptide derived from human UBE1L, corresponding to a region within C-terminal amino acids.
Isotype:	IgG
Specificity:	UBE1L Antibody detects endogenous levels of total UBE1L.
Predicted Reactivity:	Pig,Rabbit
Purification:	The antiserum was purified by peptide affinity chromatography using SulfoLink™ Coupling Resin (Thermo Fisher Scientific).

## Target Details

Target:	UBA7
---------	------

## Target Details

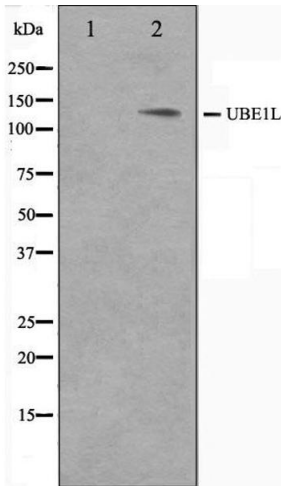
Alternative Name:	UBA7 ( <a href="#">UBA7 Products</a> )
Background:	Description: Activates ubiquitin by first adenylating with ATP its C-terminal glycine residue and thereafter linking this residue to the side chain of a cysteine residue in E1, yielding a ubiquitin-E1 thioester and free AMP. Catalyzes the ISGylation of influenza A virus NS1 protein. Gene: UBA7
Molecular Weight:	112kDa
Gene ID:	7318
UniProt:	<a href="#">P41226</a>

## Application Details

Application Notes:	WB: 1:500-1:3000, IHC: 1:50-1:200, IF/ICC 1:100-1:500, ELISA(peptide) 1:20000-1:40000
Restrictions:	For Research Use only

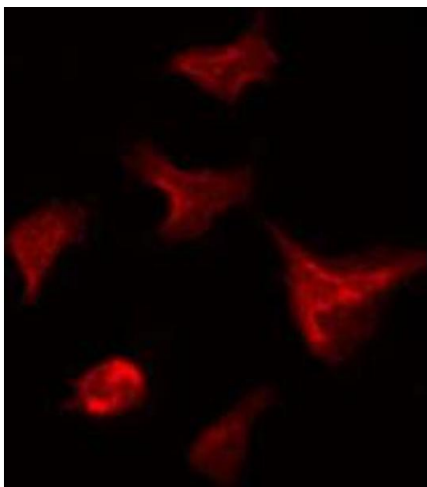
## Handling

Format:	Liquid
Concentration:	1 mg/mL
Buffer:	Rabbit IgG in phosphate buffered saline , pH 7.4, 150 mM NaCl, 0.02 % sodium azide and 50 % glycerol.
Preservative:	Sodium azide
Precaution of Use:	This product contains Sodium azide: a POISONOUS AND HAZARDOUS SUBSTANCE which should be handled by trained staff only.
Storage:	-20 °C
Storage Comment:	Store at -20 °C. Stable for 12 months from date of receipt.
Expiry Date:	12 months



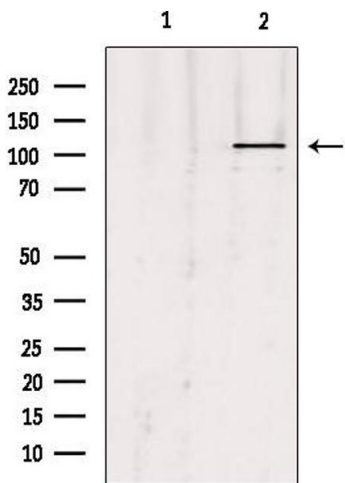
#### Western Blotting

**Image 1.** Western blot analysis on HeLa cell lysate using UBE1L Antibody. The lane on the left is treated with the antigen-specific peptide.



#### Immunofluorescence (fixed cells)

**Image 2.** ABIN6266669 staining HeLa by IF/ICC. The sample were fixed with PFA and permeabilized in 0.1% Triton X-100, then blocked in 10% serum for 45 minutes at 25°C. The primary antibody was diluted at 1/200 and incubated with the sample for 1 hour at 37°C. An Alexa Fluor 594 conjugated goat anti-rabbit IgG (H+L) Ab, diluted at 1/600, was used as the secondary antibody.



#### Western Blotting

**Image 3.** Western blot analysis of extracts from Hepg2, using UBE1L Antibody. Lane 1 was treated with the blocking peptide.

Please check the [product details page](#) for more images. Overall 4 images are available for ABIN6265841.