

Datasheet for ABIN6265844
anti-UBE2D1 antibody (C-Term)[Go to Product page](#)

2 Images

Overview

Quantity:	100 µL
Target:	UBE2D1
Binding Specificity:	C-Term
Reactivity:	Human, Mouse, Rat
Host:	Rabbit
Clonality:	Polyclonal
Conjugate:	This UBE2D1 antibody is un-conjugated
Application:	Western Blotting (WB), Immunohistochemistry (IHC), ELISA, Immunocytochemistry (ICC), Immunofluorescence (IF)

Product Details

Immunogen:	A synthesized peptide derived from human UBE2D1, corresponding to a region within C-terminal amino acids.
Isotype:	IgG
Specificity:	UBE2D1 Antibody detects endogenous levels of total UBE2D1.
Predicted Reactivity:	Pig,Bovine,Horse,Sheep,Dog,Chicken,Xenopus
Purification:	The antiserum was purified by peptide affinity chromatography using SulfoLink™ Coupling Resin (Thermo Fisher Scientific).

Target Details

Target:	UBE2D1
---------	--------

Target Details

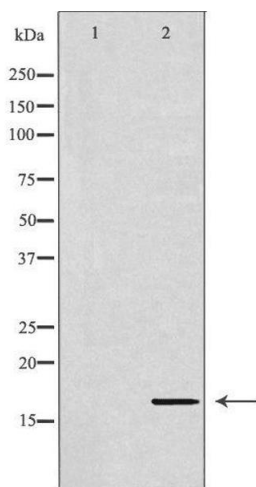
Alternative Name:	UBE2D1 (UBE2D1 Products)
Background:	<p>Description: Accepts ubiquitin from the E1 complex and catalyzes its covalent attachment to other proteins (PubMed:22496338). In vitro catalyzes 'Lys-48'-linked polyubiquitination (PubMed:20061386). Mediates the selective degradation of short-lived and abnormal proteins. Functions in the E6/E6-AP-induced ubiquitination of p53/TP53. Mediates ubiquitination of PEX5 and auto-ubiquitination of STUB1, TRAF6 and TRIM63/MURF1 (PubMed:18042044, PubMed:18359941). Ubiquitinates STUB1-associated HSP90AB1 in vitro (PubMed:18042044). Lacks inherent specificity for any particular lysine residue of ubiquitin (PubMed:18042044). Essential for viral activation of IRF3 (PubMed:19854139). Mediates polyubiquitination of CYP3A4 (PubMed:19103148).</p> <p>Gene: UBE2D1</p>
Molecular Weight:	17kDa
Gene ID:	7321
UniProt:	P51668
Pathways:	Activation of Innate immune Response , Toll-Like Receptors Cascades

Application Details

Application Notes:	WB 1:500-1:2000, IHC 1:50-1:200, IF/ICC 1:100-1:500, ELISA(peptide) 1:20000-1:40000
Restrictions:	For Research Use only

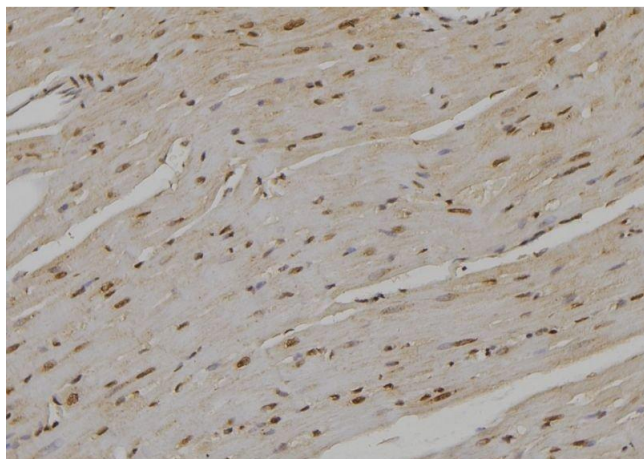
Handling

Format:	Liquid
Concentration:	1 mg/mL
Buffer:	Rabbit IgG in phosphate buffered saline , pH 7.4, 150 mM NaCl, 0.02 % sodium azide and 50 % glycerol.
Preservative:	Sodium azide
Precaution of Use:	This product contains Sodium azide: a POISONOUS AND HAZARDOUS SUBSTANCE which should be handled by trained staff only.
Storage:	-20 °C
Storage Comment:	Store at -20 °C. Stable for 12 months from date of receipt.



Western Blotting

Image 1. Western blot analysis of SW620 cell lysate, using UBE2D1 Antibody. The lane on the left is treated with the antigen-specific peptide.



Immunohistochemistry

Image 2. ABIN6276978 at 1/100 staining Rat heart tissue by IHC-P. The sample was formaldehyde fixed and a heat mediated antigen retrieval step in citrate buffer was performed. The sample was then blocked and incubated with the antibody for 1.5 hours at 22°C. An HRP conjugated goat anti-rabbit antibody was used as the secondary