

Datasheet for ABIN6265848
anti-UBE2I antibody (N-Term)[Go to Product page](#)

4 Images

Overview

Quantity:	100 µL
Target:	UBE2I
Binding Specificity:	N-Term
Reactivity:	Human, Mouse, Rat
Host:	Rabbit
Clonality:	Polyclonal
Conjugate:	This UBE2I antibody is un-conjugated
Application:	Western Blotting (WB), ELISA, Immunohistochemistry (IHC), Immunofluorescence (IF), Immunocytochemistry (ICC)

Product Details

Immunogen:	A synthesized peptide derived from human UBE2I, corresponding to a region within N-terminal amino acids.
Isotype:	IgG
Specificity:	UBE2I Antibody detects endogenous levels of total UBE2I.
Predicted Reactivity:	Pig,Bovine,Horse,Sheep,Rabbit,Dog,Chicken,Xenopus
Purification:	The antiserum was purified by peptide affinity chromatography using SulfoLink™ Coupling Resin (Thermo Fisher Scientific).

Target Details

Target:	UBE2I
---------	-------

Target Details

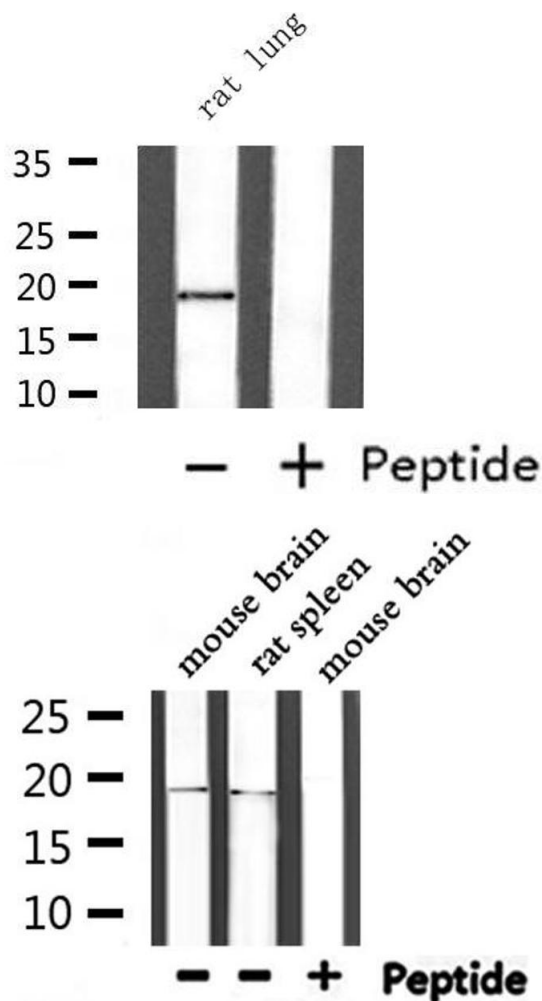
Alternative Name:	UBE2I (UBE2I Products)
Background:	<p>Description: Accepts the ubiquitin-like proteins SUMO1, SUMO2, SUMO3 and SUMO4 from the UBLE1A-UBLE1B E1 complex and catalyzes their covalent attachment to other proteins with the help of an E3 ligase such as RANBP2, CBX4 and ZNF451. Can catalyze the formation of poly-SUMO chains. Necessary for sumoylation of FOXL2 and KAT5. Essential for nuclear architecture and chromosome segregation. Sumoylates p53/TP53 at 'Lys-386'.</p> <p>Gene: UBE2I</p>
Molecular Weight:	18kDa
Gene ID:	7329
UniProt:	P63279
Pathways:	Intracellular Steroid Hormone Receptor Signaling Pathway , Regulation of Intracellular Steroid Hormone Receptor Signaling , Ubiquitin Proteasome Pathway

Application Details

Application Notes:	WB 1:500-1:2000, IHC 1:50-1:200, IF/ICC 1:100-1:500, ELISA(peptide) 1:20000-1:40000
Restrictions:	For Research Use only

Handling

Format:	Liquid
Concentration:	1 mg/mL
Buffer:	Rabbit IgG in phosphate buffered saline , pH 7.4, 150 mM NaCl, 0.02 % sodium azide and 50 % glycerol.
Preservative:	Sodium azide
Precaution of Use:	This product contains Sodium azide: a POISONOUS AND HAZARDOUS SUBSTANCE which should be handled by trained staff only.
Storage:	-20 °C
Storage Comment:	Store at -20 °C. Stable for 12 months from date of receipt.
Expiry Date:	12 months

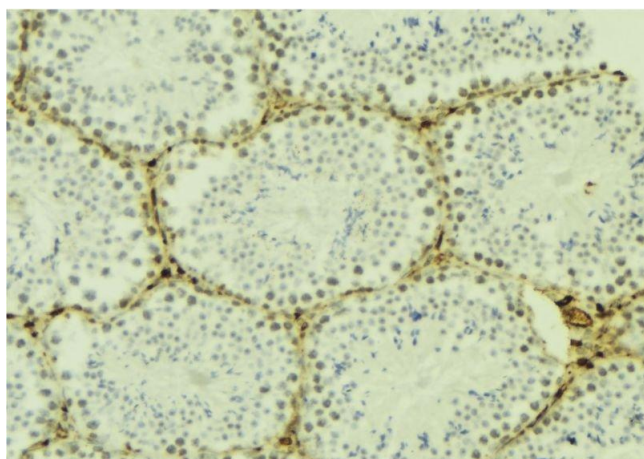


Western Blotting

Image 1. Western blot analysis of extracts from rat lung , using UBE2I Antibody.

Western Blotting

Image 2. Western blot analysis of extracts from mouse brain,rat spleen, using UBE2I Antibody.



Immunohistochemistry

Image 3. ABIN6277175 at 1/100 staining Mouse testis tissue by IHC-P. The sample was formaldehyde fixed and a heat mediated antigen retrieval step in citrate buffer was performed. The sample was then blocked and incubated with the antibody for 1.5 hours at 22°C. An HRP conjugated goat anti-rabbit antibody was used as the secondary

Please check the [product details page](#) for more images. Overall 4 images are available for ABIN6265848.