



[Go to Product page](#)

Datasheet for ABIN6265851
anti-UBE2L6 antibody (C-Term)

1 Image

Overview

Quantity:	100 µL
Target:	UBE2L6
Binding Specificity:	C-Term
Reactivity:	Human
Host:	Rabbit
Clonality:	Polyclonal
Conjugate:	This UBE2L6 antibody is un-conjugated
Application:	Western Blotting (WB), ELISA, Immunofluorescence (IF), Immunocytochemistry (ICC)

Product Details

Immunogen:	A synthesized peptide derived from human UBE2L6, corresponding to a region within C-terminal amino acids.
Isotype:	IgG
Specificity:	UBE2L6 Antibody detects endogenous levels of total UBE2L6.
Purification:	The antiserum was purified by peptide affinity chromatography using SulfoLink™ Coupling Resin (Thermo Fisher Scientific).

Target Details

Target:	UBE2L6
Alternative Name:	UBE2L6 (UBE2L6 Products)

Target Details

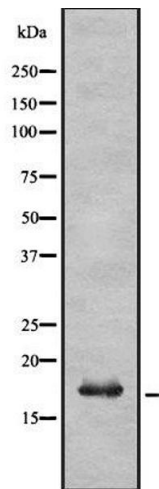
Background:	Description: Catalyzes the covalent attachment of ubiquitin or ISG15 to other proteins. Functions in the E6/E6-AP-induced ubiquitination of p53/TP53. Promotes ubiquitination and subsequent proteasomal degradation of FLT3. Gene: UBE2L6
Molecular Weight:	18 kDa
Gene ID:	9246
UniProt:	014933

Application Details

Application Notes:	WB 1:1000-3000, ELISA(peptide) 1:20000-1:40000, IF/ICC 1:100-1:500
Restrictions:	For Research Use only

Handling

Format:	Liquid
Concentration:	1 mg/mL
Buffer:	Rabbit IgG in phosphate buffered saline , pH 7.4, 150 mM NaCl, 0.02 % sodium azide and 50 % glycerol.
Preservative:	Sodium azide
Precaution of Use:	This product contains Sodium azide: a POISONOUS AND HAZARDOUS SUBSTANCE which should be handled by trained staff only.
Storage:	-20 °C
Storage Comment:	Store at -20 °C. Stable for 12 months from date of receipt.
Expiry Date:	12 months



Western Blotting

Image 1. Western blot analysis UBE2L6 using K562 whole cell lysates