



[Go to Product page](#)

Datasheet for ABIN6265870  
**anti-UCP3 antibody (C-Term)**

2 Images

Overview

Quantity:	100 µL
Target:	UCP3
Binding Specificity:	C-Term
Reactivity:	Human, Mouse, Rat
Host:	Rabbit
Clonality:	Polyclonal
Conjugate:	This UCP3 antibody is un-conjugated
Application:	Western Blotting (WB), ELISA, Immunohistochemistry (IHC)

Product Details

Immunogen:	A synthesized peptide derived from human UCP3, corresponding to a region within C-terminal amino acids.
Isotype:	IgG
Specificity:	UCP3 Antibody detects endogenous levels of total UCP3.
Predicted Reactivity:	Pig,Horse,Dog
Purification:	The antiserum was purified by peptide affinity chromatography using SulfoLink™ Coupling Resin (Thermo Fisher Scientific).

Target Details

Target:	UCP3
---------	------

## Target Details

---

Alternative Name:	<a href="#">UCP3 (UCP3 Products)</a>
Background:	Description: UCP are mitochondrial transporter proteins that create proton leaks across the inner mitochondrial membrane, thus uncoupling oxidative phosphorylation. As a result, energy is dissipated in the form of heat. May play a role in the modulation of tissue respiratory control. Participates in thermogenesis and energy balance. Gene: UCP3
Molecular Weight:	34kDa
Gene ID:	7352
UniProt:	<a href="#">P55916</a>
Pathways:	<a href="#">Proton Transport</a>

## Application Details

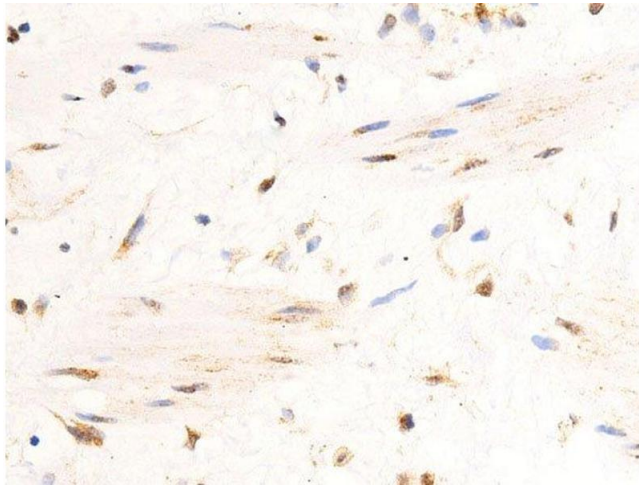
---

Application Notes:	WB 1:500-1:2000, IHC 1:50-1:200, ELISA(peptide) 1:20000-1:40000
Restrictions:	For Research Use only

## Handling

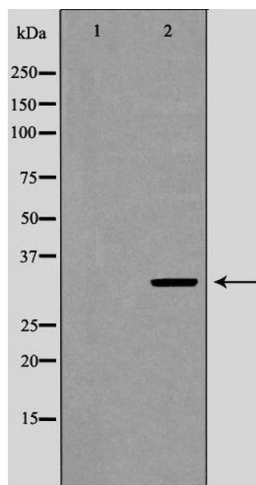
---

Format:	Liquid
Concentration:	1 mg/mL
Buffer:	Rabbit IgG in phosphate buffered saline , pH 7.4, 150 mM NaCl, 0.02 % sodium azide and 50 % glycerol.
Preservative:	Sodium azide
Precaution of Use:	This product contains Sodium azide: a POISONOUS AND HAZARDOUS SUBSTANCE which should be handled by trained staff only.
Storage:	-20 °C
Storage Comment:	Store at -20 °C. Stable for 12 months from date of receipt.
Expiry Date:	12 months



### Immunohistochemistry

**Image 1.** ABIN6276708 at 1/200 staining human heart tissue sections by IHC-P. The tissue was formaldehyde fixed and a heat mediated antigen retrieval step in citrate buffer was performed. The tissue was then blocked and incubated with the antibody for 1.5 hours at 22°C. An HRP conjugated goat anti-rabbit antibody was used as the secondary



### Western Blotting

**Image 2.** Western blot analysis of extracts of skeletal muscle, using UCP3 antibody. The lane on the left is treated with the antigen-specific peptide.