

Datasheet for ABIN6265893

anti-Cytidine Monophosphate (UMP-CMP) Kinase 1, Cytosolic (CMPK1) (N-Term) antibody[Go to Product page](#)**3** Images

Overview

Quantity:	100 µL
Target:	Cytidine Monophosphate (UMP-CMP) Kinase 1, Cytosolic (CMPK1)
Binding Specificity:	N-Term
Reactivity:	Human, Mouse
Host:	Rabbit
Clonality:	Polyclonal
Conjugate:	Un-conjugated
Application:	Western Blotting (WB), Immunohistochemistry (IHC), Immunofluorescence (IF), ELISA, Immunocytochemistry (ICC)

Product Details

Immunogen:	A synthesized peptide derived from human UMP/CMP kinase, corresponding to a region within N-terminal amino acids.
Isotype:	IgG
Specificity:	UMP/CMP kinase Antibody detects endogenous levels of total UMP/CMP kinase.
Predicted Reactivity:	Pig,Bovine,Horse,Sheep,Rabbit,Dog,Xenopus
Purification:	The antiserum was purified by peptide affinity chromatography using SulfoLink™ Coupling Resin (Thermo Fisher Scientific).

Target Details

Target:	Cytidine Monophosphate (UMP-CMP) Kinase 1, Cytosolic (CMPK1)
---------	--

Target Details

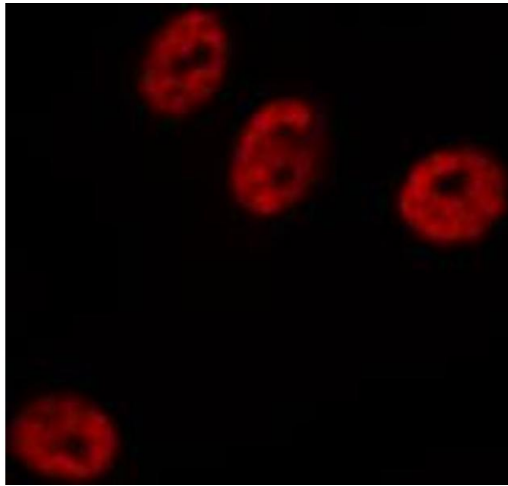
Alternative Name:	CMPK1 (CMPK1 Products)
Background:	<p>Description: Catalyzes the phosphorylation of pyrimidine nucleoside monophosphates at the expense of ATP. Plays an important role in de novo pyrimidine nucleotide biosynthesis. Has preference for UMP and CMP as phosphate acceptors. Also displays broad nucleoside diphosphate kinase activity.</p> <p>Gene: CMPK1</p>
Molecular Weight:	22kDa
Gene ID:	51727
UniProt:	P30085
Pathways:	Nucleotide Phosphorylation , Ribonucleoside Biosynthetic Process

Application Details

Application Notes:	WB 1:1000, IHC 1:200, IF/ICC 1:100-1:500, ELISA(peptide) 1:20000-1:40000
Restrictions:	For Research Use only

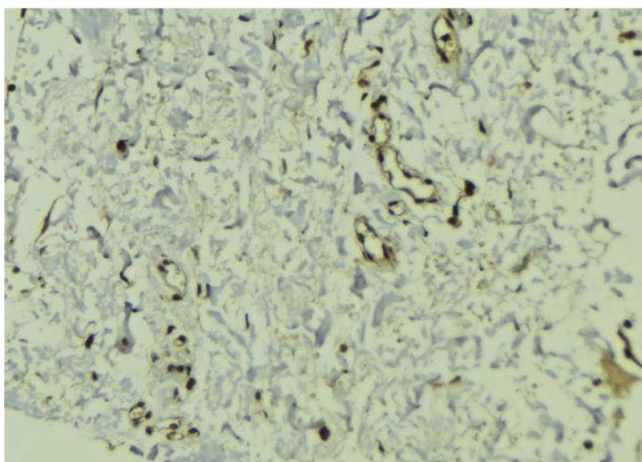
Handling

Format:	Liquid
Concentration:	1 mg/mL
Buffer:	Rabbit IgG in phosphate buffered saline , pH 7.4, 150 mM NaCl, 0.02 % sodium azide and 50 % glycerol.
Preservative:	Sodium azide
Precaution of Use:	This product contains Sodium azide: a POISONOUS AND HAZARDOUS SUBSTANCE which should be handled by trained staff only.
Storage:	-20 °C
Storage Comment:	Store at -20 °C. Stable for 12 months from date of receipt.
Expiry Date:	12 months



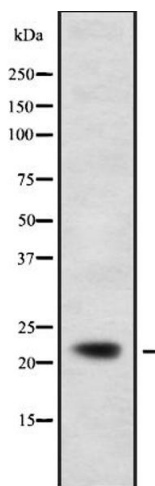
Immunofluorescence (fixed cells)

Image 1. ABIN6272454 staining HeLa by IF/ICC. The sample were fixed with PFA and permeabilized in 0.1% Triton X-100, then blocked in 10% serum for 45 minutes at 25°C. The primary antibody was diluted at 1/200 and incubated with the sample for 1 hour at 37°C. An Alexa Fluor 594 conjugated goat anti-rabbit IgG (H+L) Ab, diluted at 1/600, was used as the secondary antibody.



Immunohistochemistry

Image 2. ABIN6272454 at 1/100 staining Human breast cancer tissue by IHC-P. The sample was formaldehyde fixed and a heat mediated antigen retrieval step in citrate buffer was performed. The sample was then blocked and incubated with the antibody for 1.5 hours at 22°C. An HRP conjugated goat anti-rabbit antibody was used as the secondary.



Western Blotting

Image 3. Western blot analysis UMP-CMP Kinase using HeLa whole cell lysates