



[Go to Product page](#)

Datasheet for ABIN6265899

## anti-UQCRC1 antibody (C-Term)

### 3 Images

#### Overview

Quantity:	100 µL
Target:	UQCRC1
Binding Specificity:	C-Term
Reactivity:	Human, Mouse, Rat
Host:	Rabbit
Clonality:	Polyclonal
Conjugate:	This UQCRC1 antibody is un-conjugated
Application:	Western Blotting (WB), Immunohistochemistry (IHC), Immunofluorescence (IF), Immunocytochemistry (ICC)

#### Product Details

Immunogen:	A synthesized peptide derived from human UQCRC1, corresponding to a region within C-terminal amino acids.
Isotype:	IgG
Specificity:	UQCRC1 Antibody detects endogenous levels of total UQCRC1.
Predicted Reactivity:	Pig,Bovine,Horse,Sheep,Rabbit,Dog
Purification:	The antiserum was purified by peptide affinity chromatography using SulfoLink™ Coupling Resin (Thermo Fisher Scientific).

#### Target Details

Target:	UQCRC1
---------	--------

## Target Details

---

Alternative Name:	UQCRC1 ( <a href="#">UQCRC1 Products</a> )
Background:	Description: This is a component of the ubiquinol-cytochrome c reductase complex (complex III or cytochrome b-c1 complex), which is part of the mitochondrial respiratory chain. This protein may mediate formation of the complex between cytochromes c and c1. Gene: UQCRC1
Molecular Weight:	45 kDa
Gene ID:	7384
UniProt:	<a href="#">P31930</a>

## Application Details

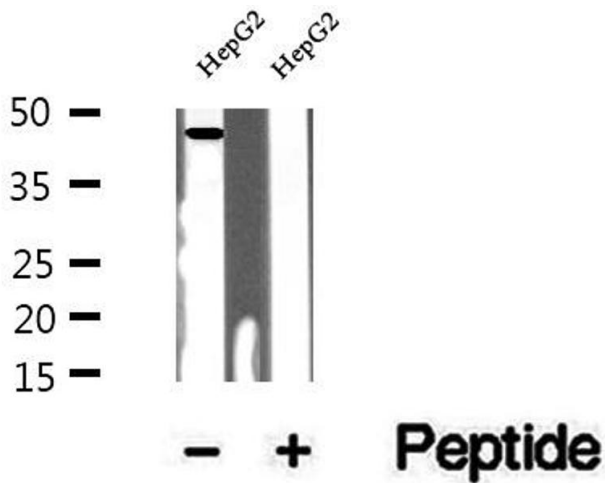
---

Application Notes:	WB 1:500-1:2000, IHC 1:50-1:200, IF/ICC 1:100-1:500
Restrictions:	For Research Use only

## Handling

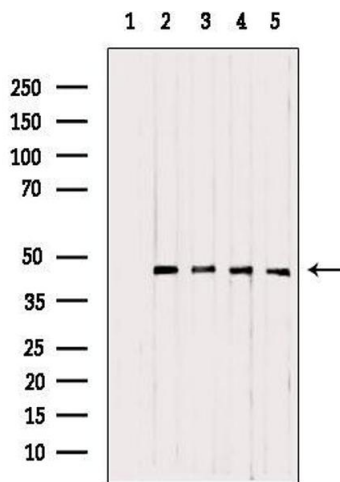
---

Format:	Liquid
Concentration:	1 mg/mL
Buffer:	Rabbit IgG in phosphate buffered saline , pH 7.4, 150 mM NaCl, 0.02 % sodium azide and 50 % glycerol.
Preservative:	Sodium azide
Precaution of Use:	This product contains Sodium azide: a POISONOUS AND HAZARDOUS SUBSTANCE which should be handled by trained staff only.
Storage:	-20 °C
Storage Comment:	Store at -20 °C. Stable for 12 months from date of receipt.
Expiry Date:	12 months



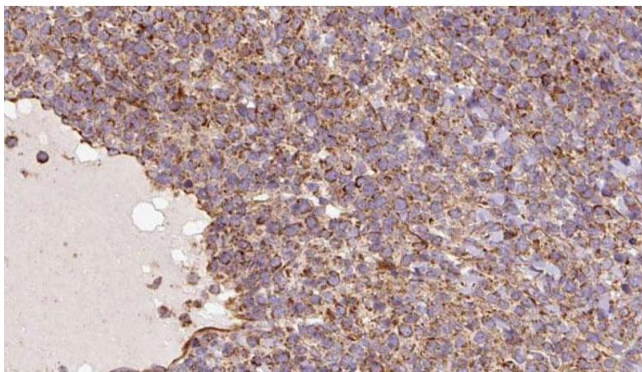
### Western Blotting

**Image 1.** Western blot analysis of extracts of HepG2 cells, using UQCRC1 antibody.



### Western Blotting

**Image 2.** Western blot analysis of extracts from various samples, using UQCRC1 antibody. Lane 1: rat brain treated with blocking peptide. Lane 2: Rat brain; Lane 3: 293; Lane 4: Mouse myeloma; Lane 5: B16F10;



### Immunohistochemistry

**Image 3.** ABIN6273182 at 1/100 staining Human lymph cancer tissue by IHC-P. The sample was formaldehyde fixed and a heat mediated antigen retrieval step in citrate buffer was performed. The sample was then blocked and incubated with the antibody for 1.5 hours at 22°C. An HRP conjugated goat anti-rabbit antibody was used as the secondary.