



[Go to Product page](#)

Datasheet for ABIN6265998  
**anti-VPS37A antibody (N-Term)**

3 Images

### Overview

Quantity:	100 µL
Target:	VPS37A
Binding Specificity:	N-Term
Reactivity:	Human, Mouse, Rat
Host:	Rabbit
Clonality:	Polyclonal
Conjugate:	This VPS37A antibody is un-conjugated
Application:	Western Blotting (WB), Immunohistochemistry (IHC), Immunofluorescence (IF), Immunocytochemistry (ICC)

### Product Details

Immunogen:	A synthesized peptide derived from human VPS37A, corresponding to a region within N-terminal amino acids.
Isotype:	IgG
Specificity:	VPS37A Antibody detects endogenous levels of total VPS37A.
Predicted Reactivity:	Pig,Zebrafish,Bovine,Horse,Sheep,Rabbit,Dog,Chicken,Xenopus
Purification:	The antiserum was purified by peptide affinity chromatography using SulfoLink™ Coupling Resin (Thermo Fisher Scientific).

### Target Details

Target:	VPS37A
---------	--------

## Target Details

---

Alternative Name:	VPS37A ( <a href="#">VPS37A Products</a> )
Background:	Description: Component of the ESCRT-I complex, a regulator of vesicular trafficking process. Required for the sorting of endocytic ubiquitinated cargos into multivesicular bodies. May be involved in cell growth and differentiation. Gene: VPS37A
Molecular Weight:	45 kDa
Gene ID:	137492
UniProt:	<a href="#">Q8NEZ2</a>

## Application Details

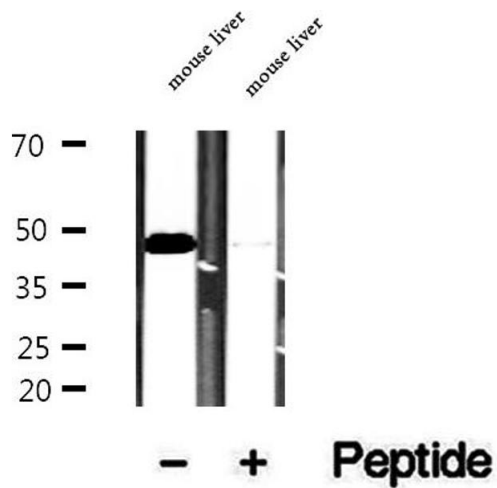
---

Application Notes:	WB 1:500-1:2000, IHC 1:50-1:200, IF/ICC 1:100-1:500
Restrictions:	For Research Use only

## Handling

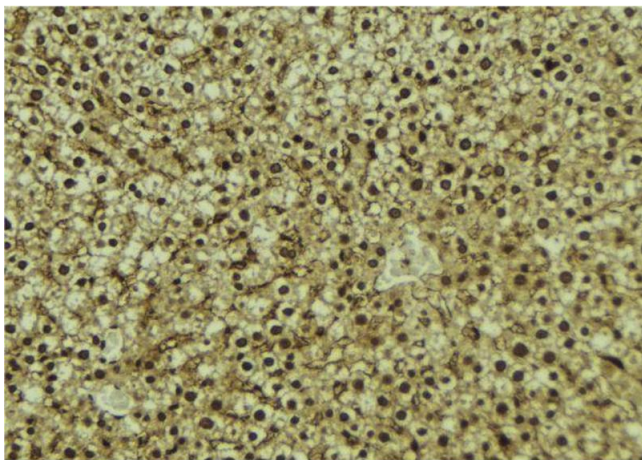
---

Format:	Liquid
Concentration:	1 mg/mL
Buffer:	Rabbit IgG in phosphate buffered saline , pH 7.4, 150 mM NaCl, 0.02 % sodium azide and 50 % glycerol.
Preservative:	Sodium azide
Precaution of Use:	This product contains Sodium azide: a POISONOUS AND HAZARDOUS SUBSTANCE which should be handled by trained staff only.
Storage:	-20 °C
Storage Comment:	Store at -20 °C. Stable for 12 months from date of receipt.
Expiry Date:	12 months



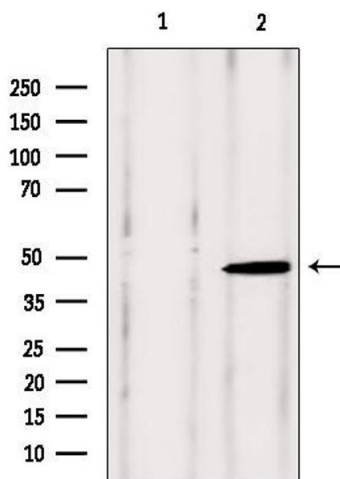
### Western Blotting

**Image 1.** Western blot analysis of extracts of mouse liver tissue, using VPS37A antibody.



### Immunohistochemistry

**Image 2.** ABIN6273087 at 1/100 staining Mouse liver tissue by IHC-P. The sample was formaldehyde fixed and a heat mediated antigen retrieval step in citrate buffer was performed. The sample was then blocked and incubated with the antibody for 1.5 hours at 22°C. An HRP conjugated goat anti-rabbit antibody was used as the secondary.



### Western Blotting

**Image 3.** Western blot analysis of extracts from rat brain, using VPS37A antibody. Lane 1 was treated with the blocking peptide.