



[Go to Product page](#)

Datasheet for ABIN6266003

anti-VSX2 antibody (Internal Region)

1 Image

Overview

Quantity:	100 µL
Target:	VSX2
Binding Specificity:	Internal Region
Reactivity:	Human, Mouse
Host:	Rabbit
Clonality:	Polyclonal
Conjugate:	This VSX2 antibody is un-conjugated
Application:	Western Blotting (WB), ELISA, Immunocytochemistry (ICC), Immunofluorescence (IF)

Product Details

Immunogen:	A synthesized peptide derived from human VSX2, corresponding to a region within the internal amino acids.
Isotype:	IgG
Specificity:	VSX2 Antibody detects endogenous levels of total VSX2.
Predicted Reactivity:	Pig,Bovine,Horse,Rabbit
Purification:	The antiserum was purified by peptide affinity chromatography using SulfoLink™ Coupling Resin (Thermo Fisher Scientific).

Target Details

Target:	VSX2
---------	------

Target Details

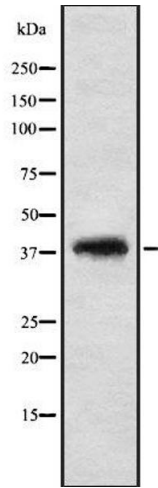
Alternative Name:	VSX2 (VSX2 Products)
Background:	Description: Plays a significant role in the specification and morphogenesis of the sensory retina. May also participate in the development of the cells of the inner nuclear layer, particularly bipolar cells (By similarity). Gene: VSX2
Molecular Weight:	39 kDa
Gene ID:	338917
UniProt:	P58304
Pathways:	Dopaminergic Neurogenesis

Application Details

Application Notes:	WB 1:1000-3000, IF/ICC 1:100-1:500, ELISA(peptide) 1:20000-1:40000
Restrictions:	For Research Use only

Handling

Format:	Liquid
Concentration:	1 mg/mL
Buffer:	Rabbit IgG in phosphate buffered saline , pH 7.4, 150 mM NaCl, 0.02 % sodium azide and 50 % glycerol.
Preservative:	Sodium azide
Precaution of Use:	This product contains Sodium azide: a POISONOUS AND HAZARDOUS SUBSTANCE which should be handled by trained staff only.
Storage:	-20 °C
Storage Comment:	Store at -20 °C. Stable for 12 months from date of receipt.
Expiry Date:	12 months



Western Blotting

Image 1. Western blot analysis of VSX2 using NIH-3T3 whole cell lysates