

Datasheet for ABIN6266015

anti-Lysine (K)-Specific Methyltransferase 2B (KMT2B) (C-Term) antibody[Go to Product page](#)**1** Image

Overview

Quantity:	100 µL
Target:	Lysine (K)-Specific Methyltransferase 2B (KMT2B)
Binding Specificity:	C-Term
Reactivity:	Human, Mouse, Rat
Host:	Rabbit
Clonality:	Polyclonal
Conjugate:	Un-conjugated
Application:	ELISA, Western Blotting (WB), Immunofluorescence (IF), Immunocytochemistry (ICC)

Product Details

Immunogen:	A synthesized peptide derived from human WBP7, corresponding to a region within C-terminal amino acids.
Isotype:	IgG
Specificity:	WBP7 Antibody detects endogenous levels of total WBP7.
Predicted Reactivity:	Bovine,Horse,Sheep,Rabbit,Dog
Purification:	The antiserum was purified by peptide affinity chromatography using SulfoLink™ Coupling Resin (Thermo Fisher Scientific).

Target Details

Target:	Lysine (K)-Specific Methyltransferase 2B (KMT2B)
---------	--

Target Details

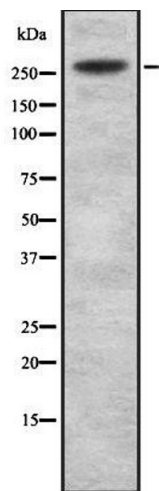
Alternative Name:	KMT2B (KMT2B Products)
Background:	<p>Description: Histone methyltransferase. Methylates 'Lys-4' of histone H3. H3 'Lys-4' methylation represents a specific tag for epigenetic transcriptional activation. Plays a central role in beta-globin locus transcription regulation by being recruited by NFE2. Plays an important role in controlling bulk H3K4me during oocyte growth and preimplantation development. Required during the transcriptionally active period of oocyte growth for the establishment and/or maintenance of bulk H3K4 trimethylation (H3K4me3), global transcriptional silencing that precedes resumption of meiosis, oocyte survival and normal zygotic genome activation.</p> <p>Gene: KMT2B</p>
Molecular Weight:	294kDa
Gene ID:	9757
UniProt:	Q9UMN6
Pathways:	Warburg Effect

Application Details

Application Notes:	WB 1:1000-3000, IF/ICC 1:100-1:500, ELISA(peptide) 1:20000-1:40000
Restrictions:	For Research Use only

Handling

Format:	Liquid
Concentration:	1 mg/mL
Buffer:	Rabbit IgG in phosphate buffered saline , pH 7.4, 150 mM NaCl, 0.02 % sodium azide and 50 % glycerol.
Preservative:	Sodium azide
Precaution of Use:	This product contains Sodium azide: a POISONOUS AND HAZARDOUS SUBSTANCE which should be handled by trained staff only.
Storage:	-20 °C
Storage Comment:	Store at -20 °C. Stable for 12 months from date of receipt.
Expiry Date:	12 months



Western Blotting

Image 1. Western blot analysis of WBP7 using HuvEc whole cell lysates