

Datasheet for ABIN6266019

anti-WDR18 antibody (Internal Region)[Go to Product page](#)**3** Images

Overview

Quantity:	100 µL
Target:	WDR18
Binding Specificity:	Internal Region
Reactivity:	Human, Mouse, Rat
Host:	Rabbit
Clonality:	Polyclonal
Conjugate:	This WDR18 antibody is un-conjugated
Application:	Western Blotting (WB), Immunohistochemistry (IHC), Immunofluorescence (IF), Immunocytochemistry (ICC)

Product Details

Immunogen:	A synthesized peptide derived from human WDR18, corresponding to a region within the internal amino acids.
Isotype:	IgG
Specificity:	WDR18 Antibody detects endogenous levels of total WDR18.
Predicted Reactivity:	Pig,Bovine,Sheep,Dog
Purification:	The antiserum was purified by peptide affinity chromatography using SulfoLink™ Coupling Resin (Thermo Fisher Scientific).

Target Details

Target:	WDR18
---------	-------

Target Details

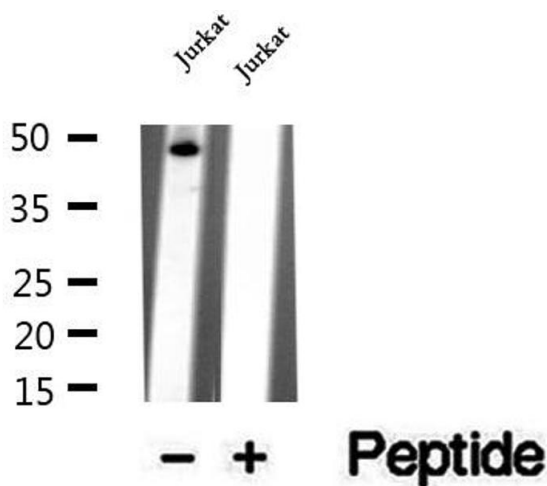
Alternative Name:	WDR18 (WDR18 Products)
Background:	<p>Description: Functions as a component of the Five Friends of Methylated CHTOP (5FMC) complex, the 5FMC complex is recruited to ZNF148 by methylated CHTOP, leading to desumoylation of ZNF148 and subsequent transactivation of ZNF148 target genes (PubMed:22872859). Component of the PELP1 complex involved in the nucleolar steps of 28S rRNA maturation and the subsequent nucleoplasmic transit of the pre-60S ribosomal subunit (PubMed:21326211).</p> <p>Gene: WDR18</p>
Molecular Weight:	47 kDa
Gene ID:	57418
UniProt:	Q9BV38

Application Details

Application Notes:	WB 1:500-1:2000, IHC 1:50-1:200, IF/ICC 1:100-1:500
Restrictions:	For Research Use only

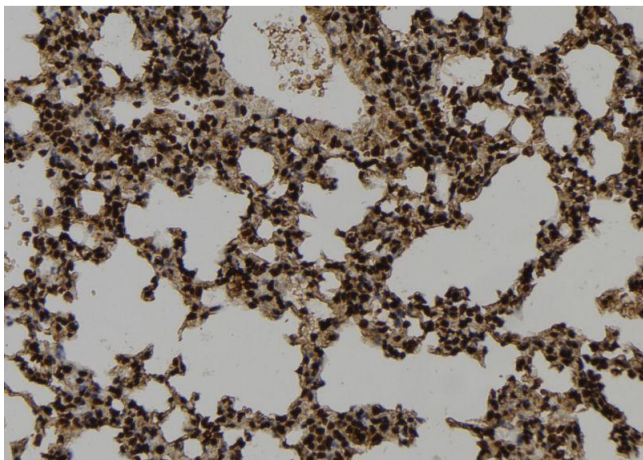
Handling

Format:	Liquid
Concentration:	1 mg/mL
Buffer:	Rabbit IgG in phosphate buffered saline , pH 7.4, 150 mM NaCl, 0.02 % sodium azide and 50 % glycerol.
Preservative:	Sodium azide
Precaution of Use:	This product contains Sodium azide: a POISONOUS AND HAZARDOUS SUBSTANCE which should be handled by trained staff only.
Storage:	-20 °C
Storage Comment:	Store at -20 °C. Stable for 12 months from date of receipt.
Expiry Date:	12 months



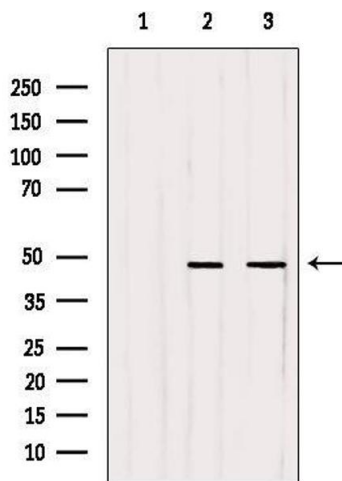
Western Blotting

Image 1. Western blot analysis of extracts of Jurkat cells, using WDR18 antibody.



Immunohistochemistry

Image 2. ABIN6273346 at 1/100 staining Mouse lung tissue by IHC-P. The sample was formaldehyde fixed and a heat mediated antigen retrieval step in citrate buffer was performed. The sample was then blocked and incubated with the antibody for 1.5 hours at 22°C. An HRP conjugated goat anti-rabbit antibody was used as the secondary.



Western Blotting

Image 3. Western blot analysis of extracts from various samples, using WDR18 Antibody. Lane 1: HepG2 treated with blocking peptide; Lane 2: HepG2; Lane 3: Hela.