

Datasheet for ABIN6266027
anti-WIP12 antibody (C-Term)[Go to Product page](#)

2 Images

Overview

Quantity:	100 µL
Target:	WIP12
Binding Specificity:	C-Term
Reactivity:	Human, Mouse, Rat
Host:	Rabbit
Clonality:	Polyclonal
Conjugate:	This WIP12 antibody is un-conjugated
Application:	Western Blotting (WB), Immunohistochemistry (IHC)

Product Details

Immunogen:	A synthesized peptide derived from human WIP12, corresponding to a region within C-terminal amino acids.
Isotype:	IgG
Specificity:	WIP12 Antibody detects endogenous levels of total WIP12.
Predicted Reactivity:	Pig, Sheep, Rabbit, Dog, Chicken, Xenopus
Purification:	The antiserum was purified by peptide affinity chromatography using SulfoLink™ Coupling Resin (Thermo Fisher Scientific).

Target Details

Target:	WIP12
---------	-------

Target Details

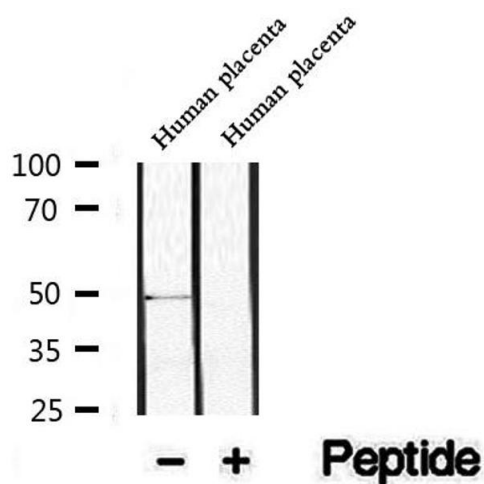
Alternative Name:	WIPI2 (WIPI2 Products)
Background:	Description: Early component of the autophagy machinery being involved in formation of preautophagosomal structures and their maturation into mature phagosomes in response to phosphatidylinositol 3-phosphate (PtdIns3P). May bind PtdIns3P. Gene: WIPI2
Molecular Weight:	49kDa
Gene ID:	26100
UniProt:	Q9Y4P8

Application Details

Application Notes:	WB 1:500-1:2000, IHC 1:50-1:200
Restrictions:	For Research Use only

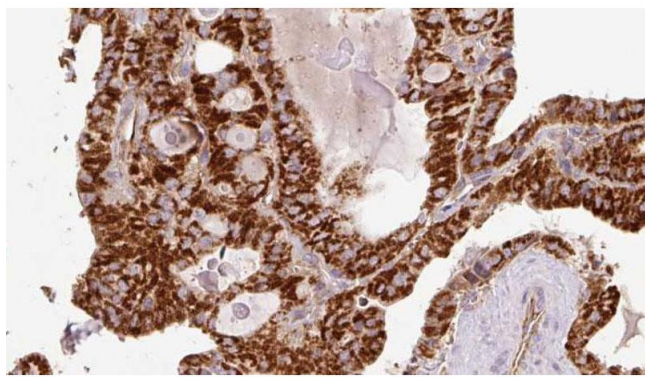
Handling

Format:	Liquid
Concentration:	1 mg/mL
Buffer:	Rabbit IgG in phosphate buffered saline , pH 7.4, 150 mM NaCl, 0.02 % sodium azide and 50 % glycerol.
Preservative:	Sodium azide
Precaution of Use:	This product contains Sodium azide: a POISONOUS AND HAZARDOUS SUBSTANCE which should be handled by trained staff only.
Storage:	-20 °C
Storage Comment:	Store at -20 °C. Stable for 12 months from date of receipt.
Expiry Date:	12 months



Western Blotting

Image 1. Western blot analysis of extracts of Human placenta tissue, using WIP12 Antibody.



Immunohistochemistry

Image 2. ABIN6267216 at 1/100 staining Human thyroid cancer tissue by IHC-P. The sample was formaldehyde fixed and a heat mediated antigen retrieval step in citrate buffer was performed. The sample was then blocked and incubated with the antibody for 1.5 hours at 22°C. An HRP conjugated goat anti-rabbit antibody was used as the secondary.