



Datasheet for ABIN6266036
anti-WNT10A antibody (N-Term)



[Go to Product page](#)

2 Images

Overview

Quantity:	100 µL
Target:	WNT10A
Binding Specificity:	N-Term
Reactivity:	Human, Rat
Host:	Rabbit
Clonality:	Polyclonal
Conjugate:	This WNT10A antibody is un-conjugated
Application:	Western Blotting (WB), Immunohistochemistry (IHC), ELISA

Product Details

Immunogen:	A synthesized peptide derived from human Wnt10a, corresponding to a region within N-terminal amino acids.
Isotype:	IgG
Specificity:	Wnt10a Antibody detects endogenous levels of total Wnt10a.
Predicted Reactivity:	Pig,Zebrafish,Bovine,Sheep,Rabbit,Dog,Chicken,Xenopus
Purification:	The antiserum was purified by peptide affinity chromatography using SulfoLink™ Coupling Resin (Thermo Fisher Scientific).

Target Details

Target:	WNT10A
---------	--------

Target Details

Alternative Name: WNT10A ([WNT10A Products](#))

Background: Description: Ligand for members of the frizzled family of seven transmembrane receptors (Probable). Functions in the canonical Wnt/beta-catenin signaling pathway (By similarity). Plays a role in normal ectoderm development (PubMed:17847007, PubMed:28589954). Required for normal tooth development (PubMed:17847007, PubMed:29178643, PubMed:28589954). Required for normal postnatal development and maintenance of tongue papillae and sweat ducts (PubMed:28589954). Required for normal proliferation of basal cells in tongue filiform papillae, plantar epithelium and sweat ducts. Required for normal expression of keratins in tongue papillae (By similarity). Required for normal expression of KRT9 in foot plant epithelium (PubMed:28589954). Required for normal hair follicle function (PubMed:28589954).
Gene: WNT10A

Molecular Weight: 46 kDa

Gene ID: 80326

UniProt: [Q9GZT5](#)

Pathways: [WNT Signaling](#)

Application Details

Application Notes: WB 1:1000-3000, IHC 1:200, ELISA(peptide) 1:20000-1:40000

Restrictions: For Research Use only

Handling

Format: Liquid

Concentration: 1 mg/mL

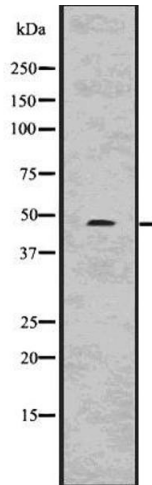
Buffer: Rabbit IgG in phosphate buffered saline , pH 7.4, 150 mM NaCl, 0.02 % sodium azide and 50 % glycerol.

Preservative: Sodium azide

Precaution of Use: This product contains Sodium azide: a POISONOUS AND HAZARDOUS SUBSTANCE which should be handled by trained staff only.

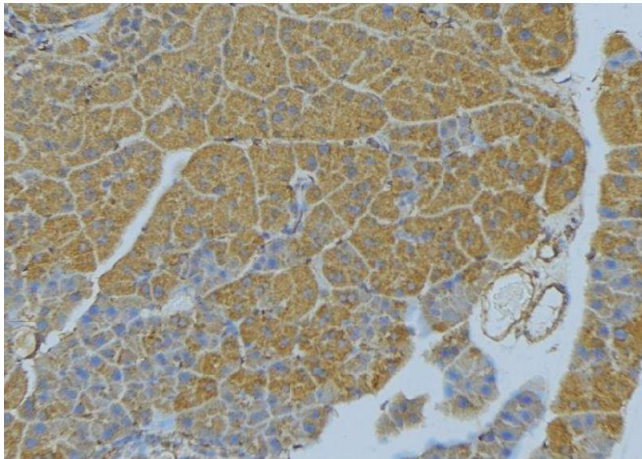
Storage: -20 °C

Storage Comment: Store at -20 °C. Stable for 12 months from date of receipt.



Western Blotting

Image 1. Western blot analysis of Wnt10a using COLO205 whole cell lysates



Immunohistochemistry

Image 2. ABIN6277779 at 1/100 staining Human pancreas tissue by IHC-P. The sample was formaldehyde fixed and a heat mediated antigen retrieval step in citrate buffer was performed. The sample was then blocked and incubated with the antibody for 1.5 hours at 22°C. An HRP conjugated goat anti-rabbit antibody was used as the secondary