

Datasheet for ABIN6266054
anti-WT1 antibody (N-Term)



[Go to Product page](#)

2 Images

Overview

Quantity:	100 µL
Target:	WT1
Binding Specificity:	N-Term
Reactivity:	Human, Mouse, Rat
Host:	Rabbit
Clonality:	Polyclonal
Conjugate:	This WT1 antibody is un-conjugated
Application:	Immunofluorescence (IF), Immunohistochemistry (IHC), Western Blotting (WB), ELISA, Immunocytochemistry (ICC)

Product Details

Immunogen:	A synthesized peptide derived from human WT1, corresponding to a region within N-terminal amino acids.
Isotype:	IgG
Specificity:	WT1 Antibody detects endogenous levels of total WT1.
Purification:	The antiserum was purified by peptide affinity chromatography using SulfoLink™ Coupling Resin (Thermo Fisher Scientific).

Target Details

Target:	WT1
Alternative Name:	WT1 (WT1 Products)

Target Details

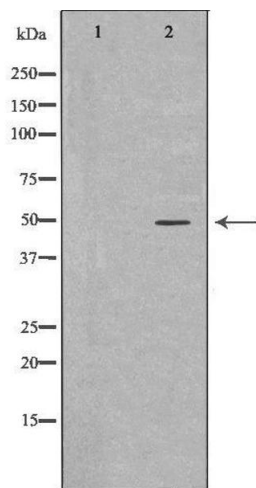
Background:	<p>Description: Transcription factor that plays an important role in cellular development and cell survival (PubMed:7862533). Recognizes and binds to the DNA sequence 5'-GCG(T/G)GGGCG-3' (PubMed:7862533, PubMed:17716689, PubMed:25258363). Regulates the expression of numerous target genes, including EPO. Plays an essential role for development of the urogenital system. It has a tumor suppressor as well as an oncogenic role in tumor formation. Function may be isoform-specific: isoforms lacking the KTS motif may act as transcription factors (PubMed:15520190). Isoforms containing the KTS motif may bind mRNA and play a role in mRNA metabolism or splicing (PubMed:16934801). Isoform 1 has lower affinity for DNA, and can bind RNA (PubMed:19123921).</p> <p>Gene: WT1</p>
Molecular Weight:	49kDa
Gene ID:	7490
UniProt:	P19544
Pathways:	Tube Formation

Application Details

Application Notes:	WB 1:500-1:2000, IHC 1:50-1:200, IF/ICC 1:100-1:500, ELISA(peptide) 1:20000-1:40000
Restrictions:	For Research Use only

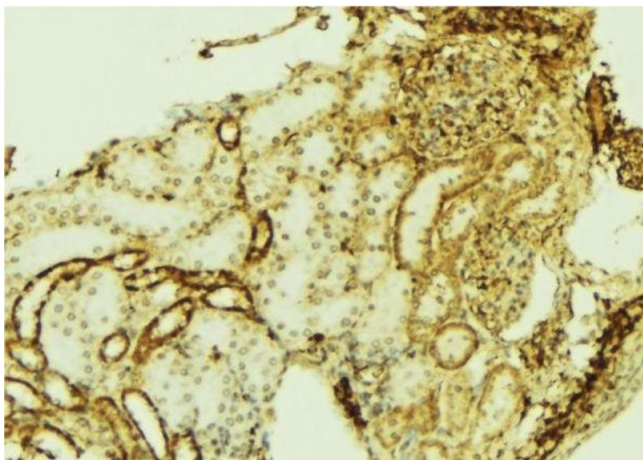
Handling

Format:	Liquid
Concentration:	1 mg/mL
Buffer:	Rabbit IgG in phosphate buffered saline , pH 7.4, 150 mM NaCl, 0.02 % sodium azide and 50 % glycerol.
Preservative:	Sodium azide
Precaution of Use:	This product contains Sodium azide: a POISONOUS AND HAZARDOUS SUBSTANCE which should be handled by trained staff only.
Storage:	-20 °C
Storage Comment:	Store at -20 °C. Stable for 12 months from date of receipt.
Expiry Date:	12 months



Western Blotting

Image 1. Western blot analysis of kidney lysate using WT1 antibody. The lane on the left is treated with the antigen-specific peptide.



Immunohistochemistry

Image 2. ABIN6276599 at 1/100 staining Mouse kidney tissue by IHC-P. The sample was formaldehyde fixed and a heat mediated antigen retrieval step in citrate buffer was performed. The sample was then blocked and incubated with the antibody for 1.5 hours at 22°C. An HRP conjugated goat anti-rabbit antibody was used as the secondary