

Datasheet for ABIN6266056  
**anti-XBP1 antibody (C-Term)**

## 2 Images

[Go to Product page](#)

## Overview

Quantity:	100 µL
Target:	XBP1
Binding Specificity:	C-Term
Reactivity:	Human, Mouse, Rat
Host:	Rabbit
Clonality:	Polyclonal
Conjugate:	This XBP1 antibody is un-conjugated
Application:	Western Blotting (WB), ELISA, Immunohistochemistry (IHC)

## Product Details

Immunogen:	A synthesized peptide derived from human XBP1, corresponding to a region within C-terminal amino acids.
Isotype:	IgG
Specificity:	XBP1 Antibody detects endogenous levels of total XBP1.
Predicted Reactivity:	Sheep,Dog
Purification:	The antiserum was purified by peptide affinity chromatography using SulfoLink™ Coupling Resin (Thermo Fisher Scientific).

## Target Details

Target:	XBP1
---------	------

## Target Details

Alternative Name:	XBP1 ( <a href="#">XBP1 Products</a> )
Background:	<p>Description: Functions as a transcription factor during endoplasmic reticulum (ER) stress by regulating the unfolded protein response (UPR). Required for cardiac myogenesis and hepatogenesis during embryonic development, and the development of secretory tissues such as exocrine pancreas and salivary gland (By similarity). Involved in terminal differentiation of B lymphocytes to plasma cells and production of immunoglobulins (PubMed:11460154).</p> <p>Modulates the cellular response to ER stress in a PIK3R-dependent manner (PubMed:20348923). Binds to the cis-acting X box present in the promoter regions of major histocompatibility complex class II genes (PubMed:8349596). Involved in VEGF-induced endothelial cell (EC) proliferation and retinal blood vessel formation during embryonic development but also for angiogenesis in adult tissues under ischemic conditions. Functions also as a major regulator of the UPR in obesity-induced insulin resistance and type 2 diabetes for the management of obesity and diabetes prevention (By similarity).</p> <p>Gene: XBP1</p>
Molecular Weight:	29 kDa
Gene ID:	7494
UniProt:	<a href="#">P17861</a>
Pathways:	<a href="#">ER-Nucleus Signaling</a> , <a href="#">Unfolded Protein Response</a>

## Application Details

Application Notes:	WB 1:500-1:2000, IHC 1:50-1:200, ELISA(peptide) 1:20000-1:40000
Restrictions:	For Research Use only

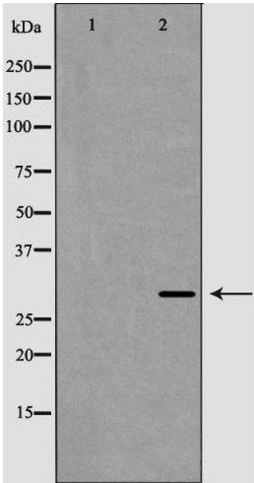
## Handling

Format:	Liquid
Concentration:	1 mg/mL
Buffer:	Rabbit IgG in phosphate buffered saline , pH 7.4, 150 mM NaCl, 0.02 % sodium azide and 50 % glycerol.
Preservative:	Sodium azide
Precaution of Use:	This product contains Sodium azide: a POISONOUS AND HAZARDOUS SUBSTANCE which should be handled by trained staff only.

Handling

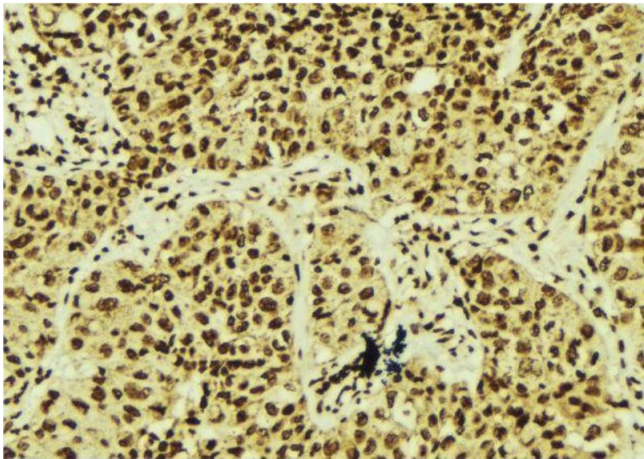
Storage:	-20 °C
Storage Comment:	Store at -20 °C. Stable for 12 months from date of receipt.
Expiry Date:	12 months

Validation report #104221 for Western Blotting (WB)



Western Blotting

**Image 1.** Western blot analysis of XBP1 expression in HepG2 cell lysate, The lane on the left is treated with the antigen-specific peptide.



Immunohistochemistry

**Image 2.** ABIN6268656 at 1/100 staining Human breast cancer tissue by IHC-P. The sample was formaldehyde fixed and a heat mediated antigen retrieval step in citrate buffer was performed. The sample was then blocked and incubated with the antibody for 1.5 hours at 22°C. An HRP conjugated goat anti-rabbit antibody was used as the secondary.