

Datasheet for ABIN6266079
anti-YME1L1 antibody (C-Term)

3 Images

[Go to Product page](#)

Overview

Quantity:	100 µL
Target:	YME1L1
Binding Specificity:	C-Term
Reactivity:	Human, Mouse, Rat
Host:	Rabbit
Clonality:	Polyclonal
Conjugate:	This YME1L1 antibody is un-conjugated
Application:	Western Blotting (WB), Immunohistochemistry (IHC), Immunofluorescence (IF), Immunocytochemistry (ICC)

Product Details

Immunogen:	A synthesized peptide derived from human YME1L1, corresponding to a region within C-terminal amino acids.
Isotype:	IgG
Specificity:	YME1L1 Antibody detects endogenous levels of total YME1L1.
Predicted Reactivity:	Pig,Bovine,Sheep,Rabbit,Dog,Chicken,Xenopus
Purification:	The antiserum was purified by peptide affinity chromatography using SulfoLink™ Coupling Resin (Thermo Fisher Scientific).

Target Details

Target:	YME1L1
---------	--------

Target Details

Alternative Name: YME1L1 ([YME1L1 Products](#))

Background: Description: ATP-dependent metalloprotease that catalyzes the degradation of folded and unfolded proteins with a suitable degron sequence in the mitochondrial intermembrane region (PubMed:26923599, PubMed:27786171). Plays an important role in regulating mitochondrial morphology and function by cleaving OPA1 at position S2, giving rise to a form of OPA1 that promotes maintenance of normal mitochondrial structure and mitochondrial protein metabolism (PubMed:18076378, PubMed:26923599, PubMed:27495975). Ensures cell proliferation, maintains normal cristae morphology and complex I respiration activity, promotes antiapoptotic activity and protects mitochondria from the accumulation of oxidatively damaged membrane proteins (PubMed:22262461). Required for normal, constitutive degradation of PRELID1 (PubMed:27495975). Catalyzes the degradation of OMA1 in response to membrane depolarization (PubMed:26923599). Required to control the accumulation of nonassembled respiratory chain subunits (NDUFB6, OX4 and ND1) (PubMed:22262461).
Gene: YME1L1

Molecular Weight: 86 kDa

Gene ID: 10730

UniProt: [Q96TA2](#)

Application Details

Application Notes: WB 1:500-1:2000, IHC 1:50-1:200, IF/ICC 1:100-1:500

Restrictions: For Research Use only

Handling

Format: Liquid

Concentration: 1 mg/mL

Buffer: Rabbit IgG in phosphate buffered saline , pH 7.4, 150 mM NaCl, 0.02 % sodium azide and 50 % glycerol.

Preservative: Sodium azide

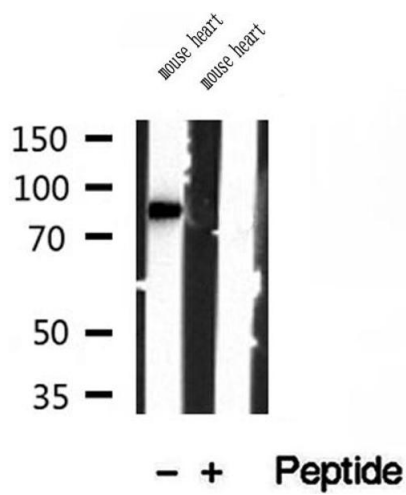
Precaution of Use: This product contains Sodium azide: a POISONOUS AND HAZARDOUS SUBSTANCE which should be handled by trained staff only.

Storage: -20 °C

Handling

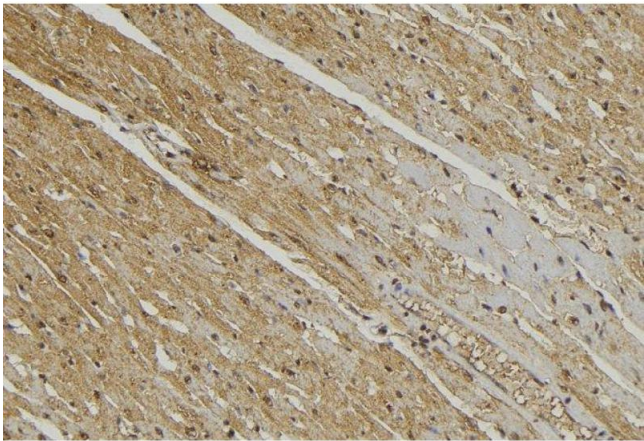
Storage Comment:	Store at -20 °C. Stable for 12 months from date of receipt.
Expiry Date:	12 months

Validation report #104221 for Western Blotting (WB)



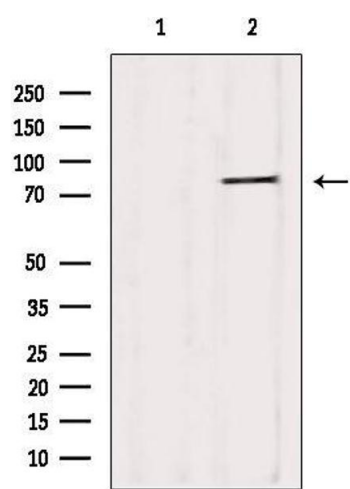
Western Blotting

Image 1. Western blot analysis of extracts of mouse heart tissue, using YME1L1 antibody.



Immunohistochemistry

Image 2. ABIN6272868 at 1/100 staining Mouse muscle tissue by IHC-P. The sample was formaldehyde fixed and a heat mediated antigen retrieval step in citrate buffer was performed. The sample was then blocked and incubated with the antibody for 1.5 hours at 22°C. An HRP conjugated goat anti-rabbit antibody was used as the secondary



Western Blotting

Image 3. Western blot analysis of extracts from HepG2, using YME1L1 Antibody. Lane 1 was treated with the blocking peptide.