

Datasheet for ABIN6266080
anti-YTHDF1 antibody (N-Term)[Go to Product page](#)

4 Images

Overview

Quantity:	100 µL
Target:	YTHDF1
Binding Specificity:	N-Term
Reactivity:	Human, Mouse, Rat
Host:	Rabbit
Clonality:	Polyclonal
Conjugate:	This YTHDF1 antibody is un-conjugated
Application:	Western Blotting (WB), ELISA, Immunofluorescence (IF), Immunocytochemistry (ICC)

Product Details

Immunogen:	A synthesized peptide derived from human YTHDF1, corresponding to a region within N-terminal amino acids.
Isotype:	IgG
Specificity:	YTHDF1 Antibody detects endogenous levels of total YTHDF1.
Predicted Reactivity:	Pig,Bovine,Horse,Sheep,Chicken,Xenopus
Purification:	The antiserum was purified by peptide affinity chromatography using SulfoLink™ Coupling Resin (Thermo Fisher Scientific).

Target Details

Target:	YTHDF1
---------	--------

Target Details

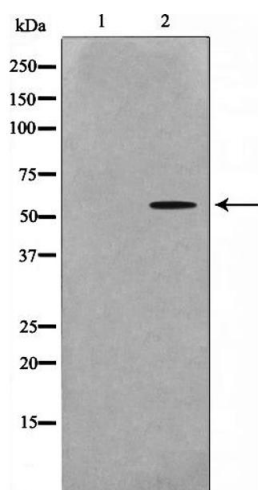
Alternative Name:	YTHDF1 (YTHDF1 Products)
Background:	<p>Description: Specifically recognizes and binds N6-methyladenosine (m6A)-containing mRNAs, and promotes mRNA translation efficiency (PubMed:24284625, PubMed:26046440, PubMed:26318451). M6A is a modification present at internal sites of mRNAs and some non-coding RNAs and plays a role in the efficiency of mRNA splicing, processing and stability (PubMed:24284625). Acts as a regulator of mRNA translation efficiency: promotes ribosome loading to m6A-containing mRNAs and interacts with translation initiation factors eIF3 (EIF3A or EIF3B) to facilitate translation initiation (PubMed:26046440).</p> <p>Gene: YTHDF1</p>
Molecular Weight:	61kDa
Gene ID:	54915
UniProt:	Q9BYJ9

Application Details

Application Notes:	WB 1:500-1:2000, IF/ICC 1:100-1:500, ELISA(peptide) 1:20000-1:40000
Restrictions:	For Research Use only

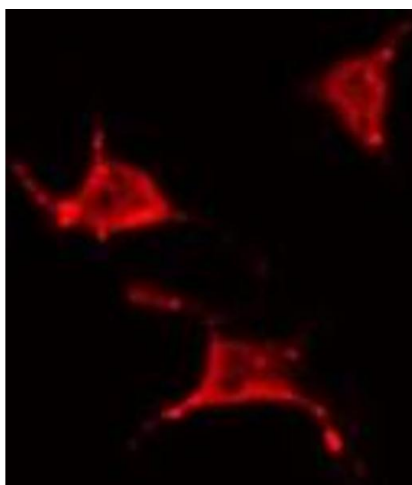
Handling

Format:	Liquid
Concentration:	1 mg/mL
Buffer:	Rabbit IgG in phosphate buffered saline , pH 7.4, 150 mM NaCl, 0.02 % sodium azide and 50 % glycerol.
Preservative:	Sodium azide
Precaution of Use:	This product contains Sodium azide: a POISONOUS AND HAZARDOUS SUBSTANCE which should be handled by trained staff only.
Storage:	-20 °C
Storage Comment:	Store at -20 °C. Stable for 12 months from date of receipt.
Expiry Date:	12 months



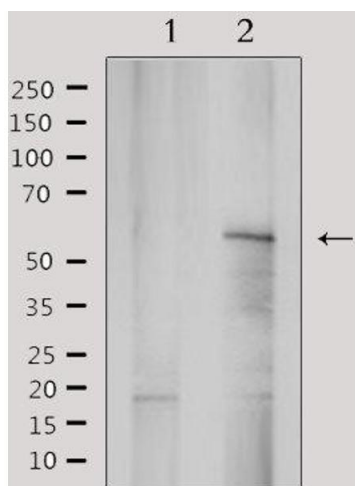
Western Blotting

Image 1. Western blot analysis on 293 cell lysate using YTHDF1 Antibody. The lane on the left is treated with the antigen-specific peptide.



Immunofluorescence (fixed cells)

Image 2. ABIN6266801 staining 293 by IF/ICC. The sample were fixed with PFA and permeabilized in 0.1% Triton X-100, then blocked in 10% serum for 45 minutes at 25°C. The primary antibody was diluted at 1/200 and incubated with the sample for 1 hour at 37°C. An Alexa Fluor 594 conjugated goat anti-rabbit IgG (H+L) Ab, diluted at 1/600, was used as the secondary antibody.



Western Blotting

Image 3. Western blot analysis of extracts from rat brain, using YTHDF1 Antibody. Lane 1 was treated with the antigen-specific peptide.

Please check the [product details page](#) for more images. Overall 4 images are available for ABIN6266080.