

Datasheet for ABIN6266089

anti-ZBTB17 antibody (Internal Region)[Go to Product page](#)**3** Images

Overview

Quantity:	100 µL
Target:	ZBTB17
Binding Specificity:	Internal Region
Reactivity:	Human, Mouse, Rat
Host:	Rabbit
Clonality:	Polyclonal
Conjugate:	This ZBTB17 antibody is un-conjugated
Application:	Western Blotting (WB), ELISA

Product Details

Immunogen:	A synthesized peptide derived from human ZBTB17, corresponding to a region within the internal amino acids.
Isotype:	IgG
Specificity:	ZBTB17 Antibody detects endogenous levels of total ZBTB17.
Predicted Reactivity:	Pig,Bovine,Horse,Rabbit,Dog
Purification:	The antiserum was purified by peptide affinity chromatography using SulfoLink™ Coupling Resin (Thermo Fisher Scientific).

Target Details

Target:	ZBTB17
---------	--------

Target Details

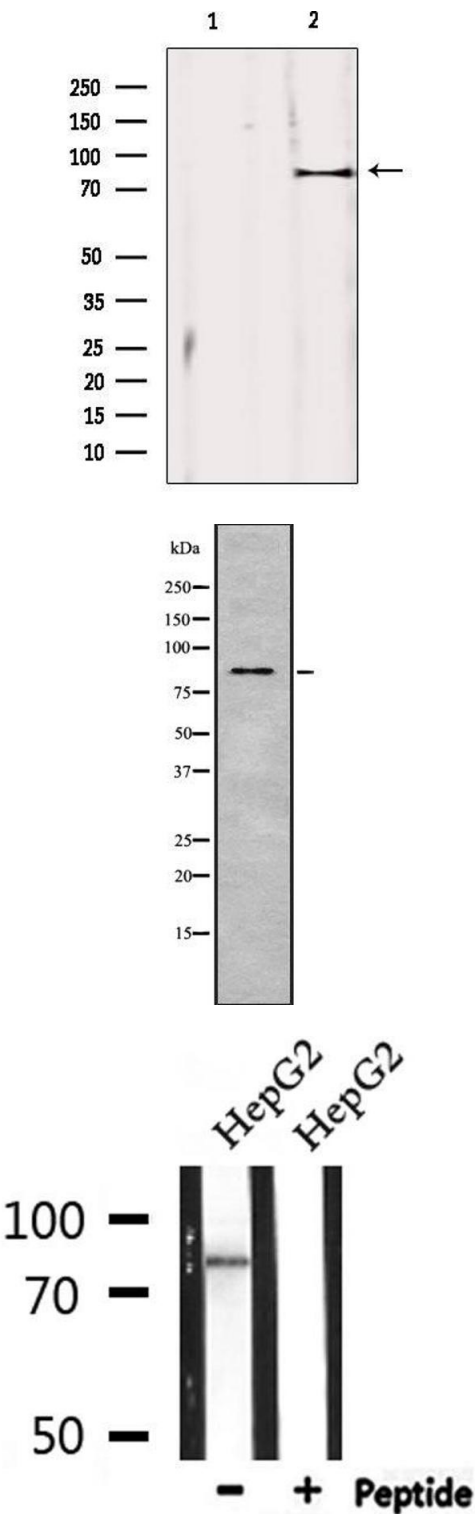
Alternative Name:	ZBTB17 (ZBTB17 Products)
Background:	<p>Description: Transcription factor that can function as an activator or repressor depending on its binding partners, and by targeting negative regulators of cell cycle progression. Plays a critical role in early lymphocyte development, where it is essential to prevent apoptosis in lymphoid precursors, allowing them to survive in response to IL7 and undergo proper lineage commitment. Has been shown to bind to the promoters of adenovirus major late protein and cyclin D1 and activate transcription. Required for early embryonic development during gastrulation. Represses RB1 transcription, this repression can be blocked by interaction with ZBTB49 isoform 3/ZNF509S1 (PubMed:25245946).</p> <p>Gene: ZBTB17</p>
Molecular Weight:	88 kDa
Gene ID:	7709
UniProt:	Q13105
Pathways:	Intracellular Steroid Hormone Receptor Signaling Pathway , Regulation of Intracellular Steroid Hormone Receptor Signaling , ER-Nucleus Signaling

Application Details

Application Notes:	WB 1:1000-3000, ELISA(peptide) 1:20000-1:40000
Restrictions:	For Research Use only

Handling

Format:	Liquid
Concentration:	1 mg/mL
Buffer:	Rabbit IgG in phosphate buffered saline , pH 7.4, 150 mM NaCl, 0.02 % sodium azide and 50 % glycerol.
Preservative:	Sodium azide
Precaution of Use:	This product contains Sodium azide: a POISONOUS AND HAZARDOUS SUBSTANCE which should be handled by trained staff only.
Storage:	-20 °C
Storage Comment:	Store at -20 °C. Stable for 12 months from date of receipt.



Western Blotting

Image 1. Western blot analysis of extracts from mouse brain, using ZBTB17 Antibody. Lane 1 was treated with the blocking peptide.

Western Blotting

Image 2. Western blot analysis of ZBTB17 using HeLa whole cell lysates

Western Blotting

Image 3. Western blot analysis of extracts from HepG2, using ZBTB17 Antibody.