

Datasheet for ABIN6266092  
**anti-ZCCHC11 antibody (Internal Region)**[Go to Product page](#)

## 3 Images

## Overview

Quantity:	100 µL
Target:	ZCCHC11
Binding Specificity:	Internal Region
Reactivity:	Human, Mouse, Rat
Host:	Rabbit
Clonality:	Polyclonal
Conjugate:	This ZCCHC11 antibody is un-conjugated
Application:	Western Blotting (WB), Immunohistochemistry (IHC), Immunofluorescence (IF), Immunocytochemistry (ICC)

## Product Details

Immunogen:	A synthesized peptide derived from human ZCCHC11, corresponding to a region within the internal amino acids.
Isotype:	IgG
Specificity:	ZCCHC11 Antibody detects endogenous levels of total ZCCHC11.
Predicted Reactivity:	Chicken
Purification:	The antiserum was purified by peptide affinity chromatography using SulfoLink™ Coupling Resin (Thermo Fisher Scientific).

## Target Details

Target:	ZCCHC11
---------	---------

## Target Details

Alternative Name:	ZCCHC11 ( <a href="#">ZCCHC11 Products</a> )
Background:	<p>Description: Uridyltransferase that mediates the terminal uridylation of mRNAs with short (less than 25 nucleotides) poly(A) tails, hence facilitating global mRNA decay (PubMed:25480299). Involved in microRNA (miRNA)-induced gene silencing through uridylation of deadenylated miRNA targets. Also acts as a suppressor of miRNA biogenesis by mediating the terminal uridylation of some miRNA precursors, including that of let-7 (pre-let-7), miR107, miR-143 and miR-200c. Uridylated miRNAs are not processed by Dicer and undergo degradation. Degradation of pre-let-7 contributes to the maintenance of embryonic stem (ES) cell pluripotency (By similarity). Does not bind RNA directly, but recruited to RNA targets by RNA-binding protein LIN28A. Also catalyzes the 3' uridylation of miR-26A, a miRNA that targets IL6 transcript. This abrogates the silencing of IL6 transcript, hence promoting cytokine expression (By similarity). May also suppress Toll-like receptor-induced NF-kappa-B activation via binding to T2BP. Does not play a role in replication-dependent histone mRNA degradation. Due to functional redundancy between ZCCHC6 and ZCCHC11, the identification of the specific role of each of these proteins is difficult.</p> <p>Gene: ZCCHC11</p>
Molecular Weight:	185 kDa
Gene ID:	23318
UniProt:	<a href="#">Q5TAX3</a>
Pathways:	<a href="#">Stem Cell Maintenance</a>

## Application Details

Application Notes:	WB 1:500-1:2000, IHC 1:50-1:200, IF/ICC 1:100-1:500
Restrictions:	For Research Use only

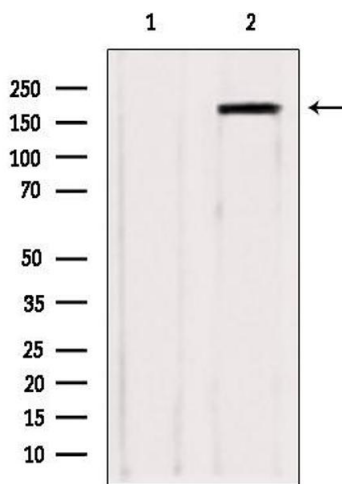
## Handling

Format:	Liquid
Concentration:	1 mg/mL
Buffer:	Rabbit IgG in phosphate buffered saline , pH 7.4, 150 mM NaCl, 0.02 % sodium azide and 50 % glycerol.
Preservative:	Sodium azide

Handling

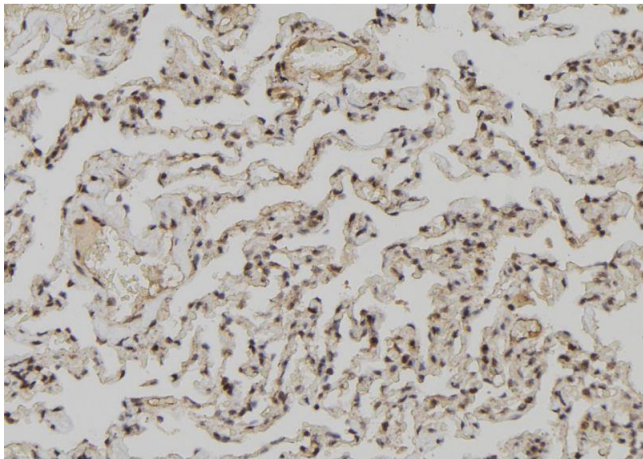
Precaution of Use:	This product contains Sodium azide: a POISONOUS AND HAZARDOUS SUBSTANCE which should be handled by trained staff only.
Storage:	-20 °C
Storage Comment:	Store at -20 °C. Stable for 12 months from date of receipt.
Expiry Date:	12 months

Images



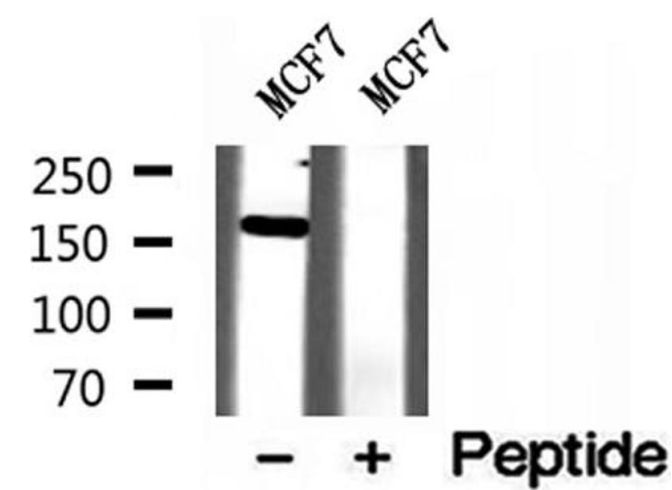
Western Blotting

**Image 1.** Western blot analysis of extracts from various samples, using ZCCHC11 antibody. Lane 1: hepg2 treated with blocking peptide. Lane 2: Hepg2; Lane 3: B16F10;



Immunohistochemistry

**Image 2.** ABIN6273027 at 1/100 staining Human lung tissue by IHC-P. The sample was formaldehyde fixed and a heat mediated antigen retrieval step in citrate buffer was performed. The sample was then blocked and incubated with the antibody for 1.5 hours at 22°C. An HRP conjugated goat anti-rabbit antibody was used as the secondary.



Western Blotting

**Image 3.** Western blot analysis of extracts of MCF7 cells, using ZCCHC11 antibody.